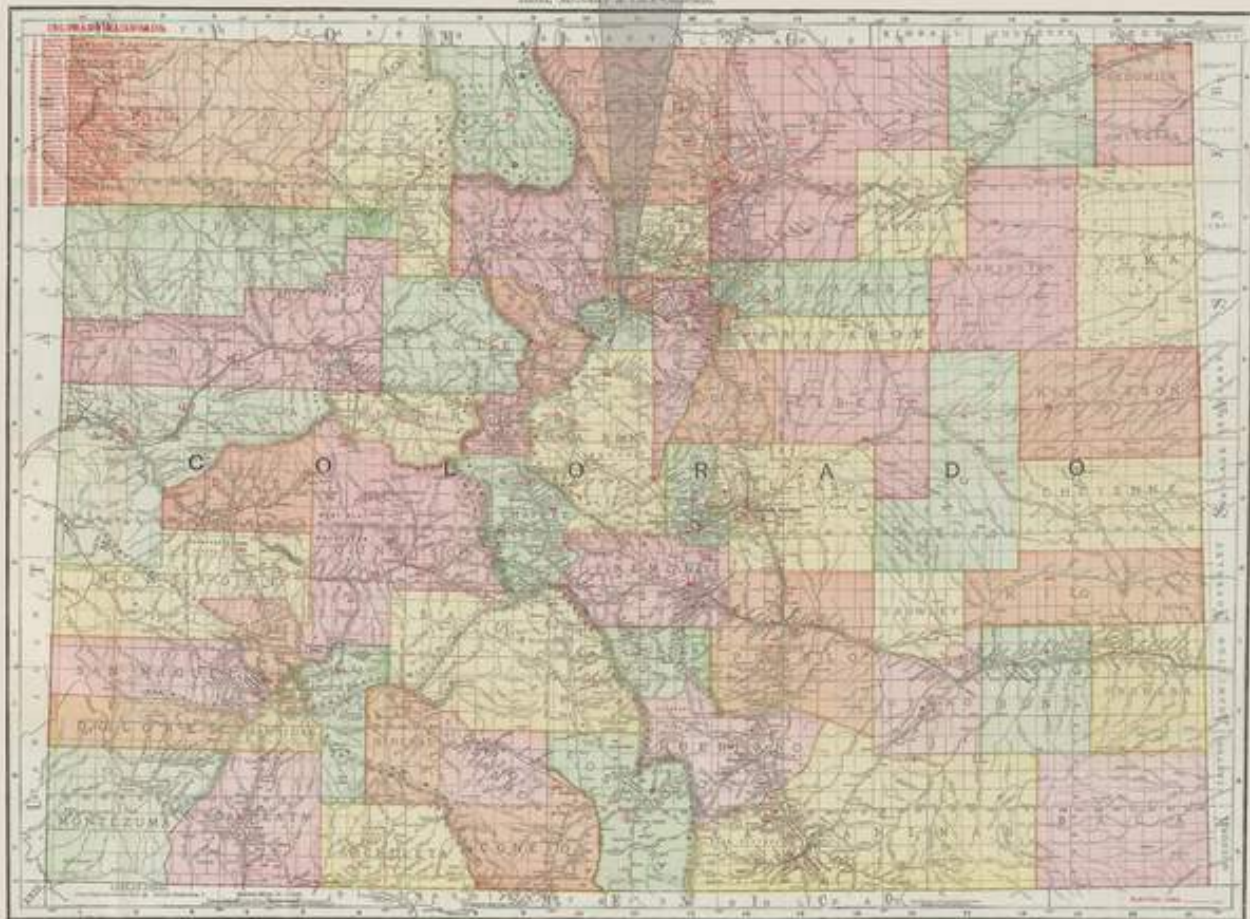


Clear Creek County



Map courtesy of <http://www.davidrumsey.com>

Established: November 1, 1861

County Seat: Georgetown

CLEAR CREEK COUNTY

By William H. Bauer

Clear Creek County lies due west of Denver and is entirely within the Front Range of the Rocky Mountains. It was one of the original seventeen counties created on November 1, 1861 by the Territorial Legislature. The boundaries of the county have remained essentially constant since its creation with only a few minor survey alterations to comply with the legal description.

The county is an irregular rectangle approximately twenty-seven miles east to west and twenty-one miles north to south. The southern and eastern borders are straight lines, but the northern and western borders follow drainage divides. From the northeast corner of the county, the border is the drainage divide between the North Fork of Clear Creek and the main Clear Creek. This divide extends west to intersect the Continental Divide, which then becomes the western boundary of Clear Creek County. North of the Clear Creek drainage divide lies Gilpin County. West of the Continental Divide are Grand and Summit Counties. On the south, Park County is the bordering county and on the east Jefferson County.

Approximately two-thirds of the county lies in the Clear Creek drainage basin. To the south of Guanella Pass and Mount Evans the drainage is to the South Platte River. The southeastern corner of the county drains to the South Platte River by way of Bear Creek. Obviously Clear Creek is the principal stream with its major tributaries, South Clear Creek, West Clear Creek, Mill Creek, Fall River and Chicago Creek. The confluence of Clear Creek and Fall River is claimed to be the only place where a river flows into a creek.

The topography of the county is mountainous throughout with very little ground suitable for agriculture. There is some ranching and modern "estate" development has created a number of small horse farms.

The high point of the county is the summit of Mount Evans at 14,264 feet. Mount Evans is a part of the Denver Mountain Parks System and there is an auto road to within a few feet of the summit. Berthoud Pass at 11,315 feet carries US Highway 40 over the Continental Divide and into Grand County. To the south Loveland Pass at 11,992 feet carries US Highway 6 into Summit County.

The main east-west travel route through the county is Interstate 70, which parallels Clear Creek and passes under the Continental Divide through the Eisenhower Tunnel at 11,156 feet.

Travel to the south, in and out of the county, is over 11,669 foot Guanella Pass on a secondary road.

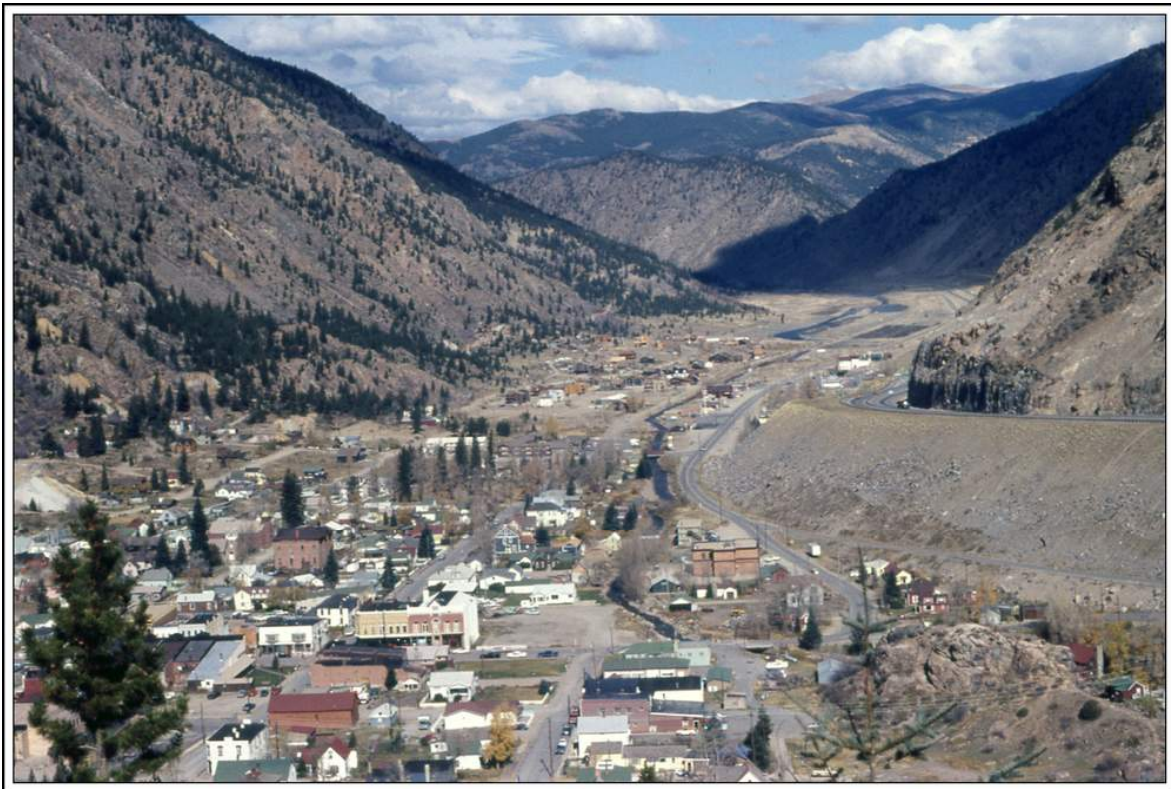
The first discovery of gold in Clear Creek County was in January 1859 on Chicago Creek near what is now Idaho Springs. In the mid-1860's the discovery of silver in the Georgetown and Silver Plume areas gave additional impetus to the mining industry. Overall, the mining was in a belt that spanned the county from southwest to northeast – the famous "Colorado Gold Belt." For nearly a hundred years mining was the mainstay of the economy for Clear Creek County.

By the mid-twentieth century, mining was coming to an end. There have been sporadic attempts at revival and there are still a few one or two man operations, but they contribute little to the economy.

As Clear Creek County enters the twenty-first century the economy has become almost exclusively based on recreation and tourism. The proximity of the county to Denver makes it a prime area for weekend campers and hikers. Travelers on Interstate 70 feed local businesses and a growing suburban population makes an ever increasing contribution to the economy of Clear Creek County.

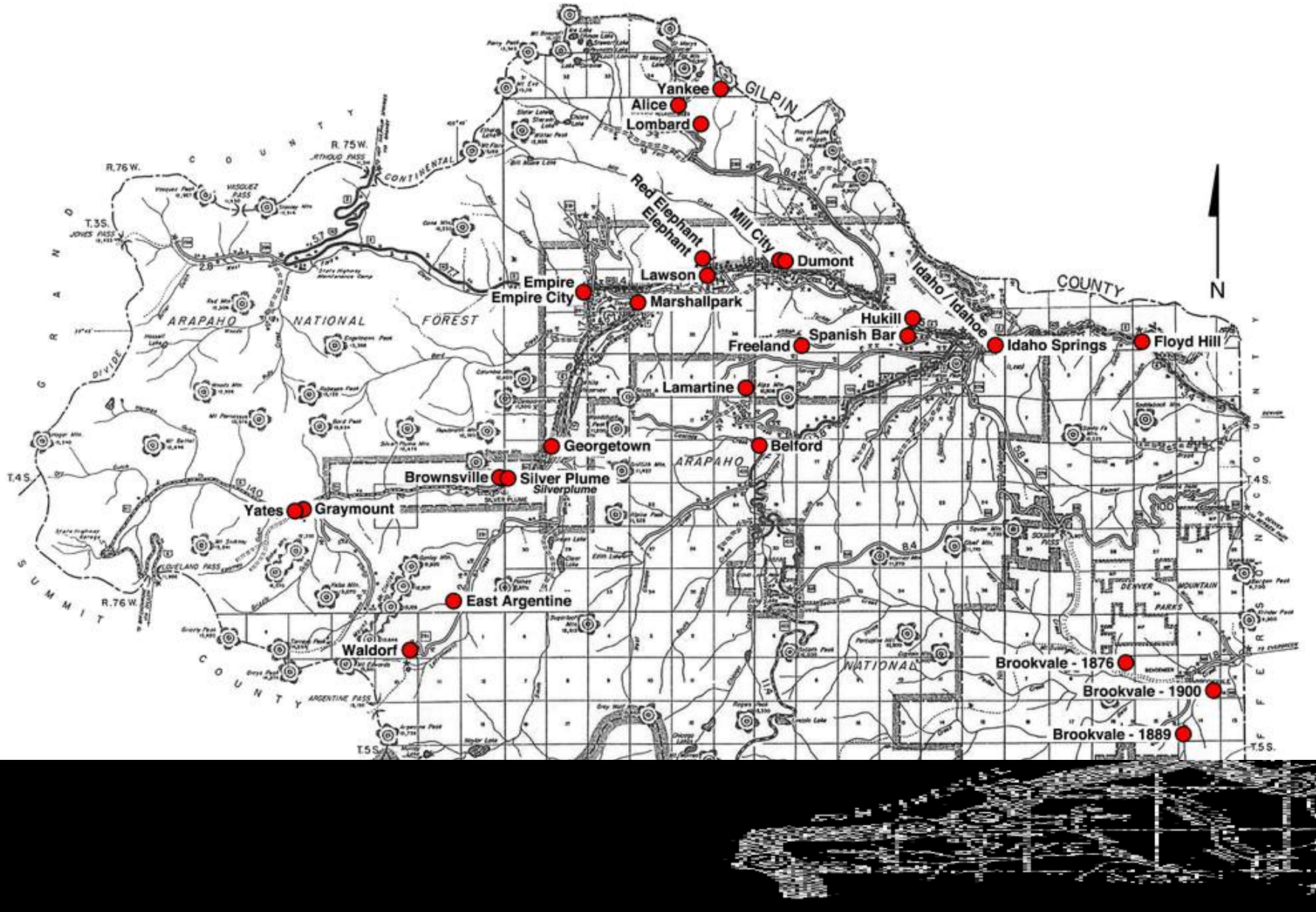
NOTES: A word of caution concerning the tabulations that accompany the discussions of each town. The *Records of Postmaster Appointments* for Clear Creek County are incomplete. Some of the early appointments are missing.

Clear Creek County was one of the counties where Jim Ozment and I began our efforts at visiting sites. We made a couple of day trips from Golden to the more obvious places, but, I had not yet settled into a pattern of recording a detailed description of directions to the places, so I apologize for some rather indefinite descriptions of how to get to some of the sites. I have revisited and improved the information for the places along Interstate 70.



Georgetown, Colorado – commercial center of Clear Creek County
Photograph by William H. Bauer

1972



Post Office Location Map – Clear Creek County

ALICE

Alice was the largest of the mining communities along the Fall River. It was at the upper end of the valley, a short distance below St. Mary's Glacier. The mining camp began in the early 1880's when placer gold was found along the Fall River. However, the camp did not develop to a size that warranted a post office until the turn of the century. Gold, silver, lead and zinc were produced from the mines at Alice. In addition to the mining activity, Alice was a stage stop on the route from Central City, over Yankee Hill to Idaho Springs.

It has been stated that mining began here as early as 1868 with the discovery of the Alice Mine. The mine was named for the wife of the discoverer, a Mr. Taylor. The town, originally called Yorktown, was renamed for the mine. If this claim to an early discovery is correct, the mystery is why it took more than thirty years for the location to gain a post office.

The location is ten miles northwest of Idaho Springs and was sufficiently remote to warrant a post office if there was any reasonable population. The site is simple to reach, if you don't mind some steep grades and a few switchbacks. Drive west from Idaho Springs to the Fall River Exit from Interstate 70. The exit is in the vicinity of the sites of Mill City and Spanish Bar. This used to be labeled as the road to St. Mary's Glacier, but climate change or global warming has taken its toll and the glacier no longer deserves mention on the road sign.

Alice is a spread out community with a scattering of old structures that are now overshadowed by modern development. There is a small lake and some commercial development. The Alice school still stands and has been renovated. If your transportation is a four-wheel drive, then you can continue on to Yankee and Lombard.

Latitude = 39:49:06 North Longitude = 105:38:32 West

Chronology of the Post Office

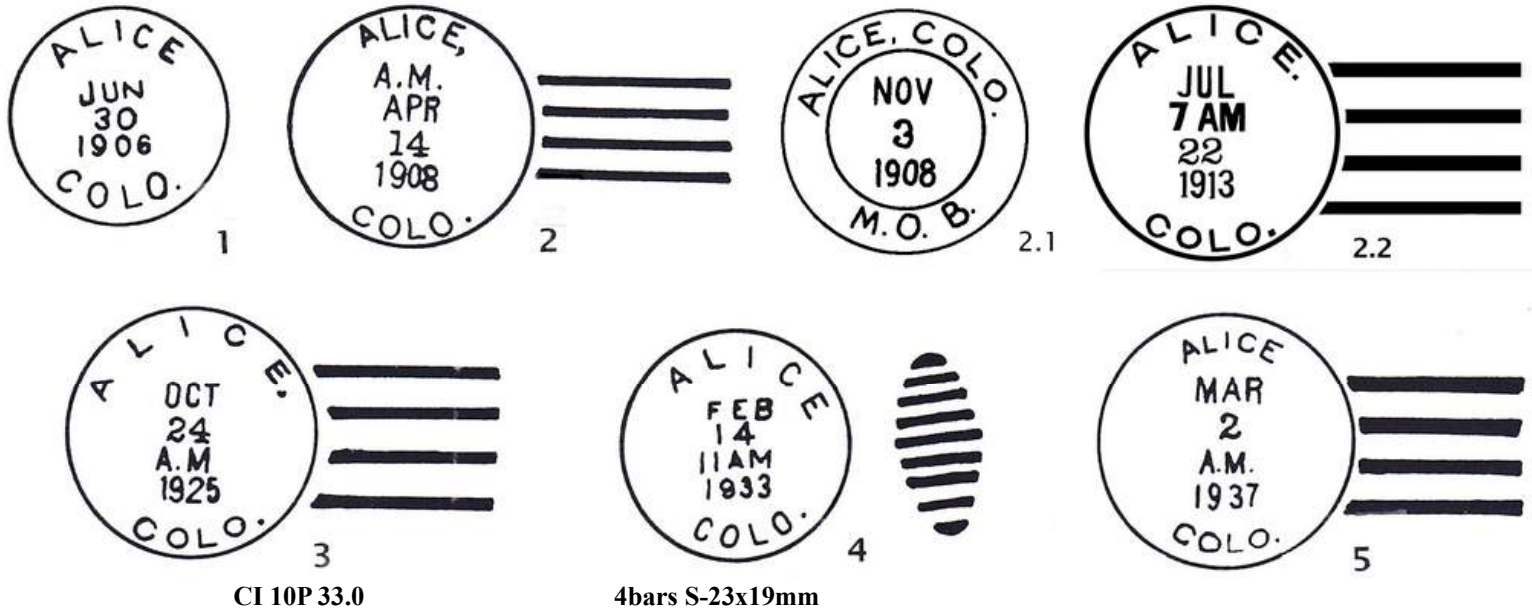
Aug 20 1898	Established	
Aug 20 1898	Vance, H. W.	Order rescinded Jun 20 1898
Feb 4 1900	---- NW/4 Sec 2 T3S R74W	
	Proposed postmaster - Loretta Grace Hawk	
Oct 16 1900	Re-established	
Oct 16 1900	Hawk, Loretta J.	
Nov 5 1900	Harper, Emma J.	
Jan 10 1913	Harten, Agnes H.	
Sep 16 1914	Alexander, C. Edwin	
Nov 4 1915	Slater, Catherine M.	
Aug 31 1917	Werber, Lillian	
Jun 16 1919	Hall, William S.	
Oct 26 1923	Kaminsky, Ethel	Acting
Oct 11 1923	Kaminsky, Ethel	Appointed
Oct 10 1925	Discontinued Mail to Idaho Springs	
Feb 11 1934	---- NE/4 Sec 3 T3S R74W	One mile west of Silver Creek
Nov 9 1936	Re-established	
Dec 31 1938	Discontinued	

Confirmed types of postal markings

1	ALICE / COLO.	Dec 18 1900 Jan 4 1907
	CI 10P 28.0	Hstp Target, 4-ring 17mm
2	ALICE, / COLO.	Apr 14 1908 Nov 20 1909
	CI 10P 31.5	4bars S-24x14mm
2.1	ALICE, COLO. / M. O. B.	Nov 3 1908
	CI 11P 31.0/20.0	Hstp No killer

ALICE – Continued

2.2	ALICE, / COLO. CI 10P 32.0	4bars S-26x20mm	Jul 22 1913
3	ALICE, / COLO. CI 10P 33.0	4bars S-24x19mm	Dec 2- 1917 Oct 24 1925
4	ALICE / COLO. CI 10P 30.0	Dplx Grid, 9 bar oval	Feb 14 1933 Sep 12 1939
5	ALICE / COLO.		Dec 26 1935 Mar 2 1937



BELFORD

Belford was a small mining community at the junction of Cascade Creek with Chicago Creek, approximately five miles southwest of Idaho Springs on the road from Idaho Springs to Echo Lake and Mount Evans. When the application for a post office was filed, the name Cascade was requested; however, that was rejected in favor of Belford. The short life of the Belford Post Office indicates that the mineral discoveries there were not rich enough to warrant any lasting development.

In my readings of Colorado history I found no mention of this Belford in Clear Creek County.

From Idaho Springs drive southwest on the road to Mount Evans. There is extensive recent development along this road so it may not be easy to spot the proper location. Two fairly good-sized streams enter Chicago Creek from the northwest. The first of these is Ute Creek. A half-mile further is the second, Cascade Creek. There are roads, of a sort, up both creeks. A short distance up the side road at Cascade Creek a remnant foundation is visible. There are also some small mine dumps near the junction of the two streams.

Chronology of the Post Office

Feb 25 1884	---	NW/4 Sec 18 T4S R73W On Chicago Creek
		Proposed postmaster - Hattie E. Russell
Mar 7 1884		Established
Mar 7 1884		Russell, Hattie E.
Aug 11 1884		Discontinued Mail to Idaho Springs

Confirmed types of postal markings

NO POSTAL MARKINGS HAVE BEEN REPORTED FROM BELFORD

BROOKVALE

By the time Colorado historians began to acknowledge the presence of Brookvale it had become known as a rustic resort ten miles southeast of Idaho Springs and 12 miles west of Morrison. Its early beginnings in the 1870s were not recorded but most likely it was a ranching community or a failed attempt at mining on the eastern slopes of Mount Evans. In the modern era, it has developed into a scattered residential community.

The Post Office Department Geographic Site Location Reports contain six different locations for the Brookvale Post Office. This supports the idea that during the existence of a Brookvale Post Office there was no really organized community of Brookvale. To make matters a little more difficult the documents for Brookvale are filed under Conejos County, not Clear Creek County.

Even the name for the community was at times uncertain. In its early days it may have been known as Bendemeer but when it was opened for the third time in 1889 the proposed name was to be Lakeview, which was rejected.

To reach the Brookvale complex, begin at the north end of the lake in Evergreen. Turn on to Bear Creek Road. At 4.4 miles you enter Clear Creek County. One and a half miles into Clear Creek County, the pavement ends (1998) at a fork in the road. The left-hand fork goes to the plotted locations of Brookvale in 1914 and 1941 (one-half mile) and 1889 (1.2 miles from the fork). Most of the buildings along this road are new and expensive, but there was one older building.

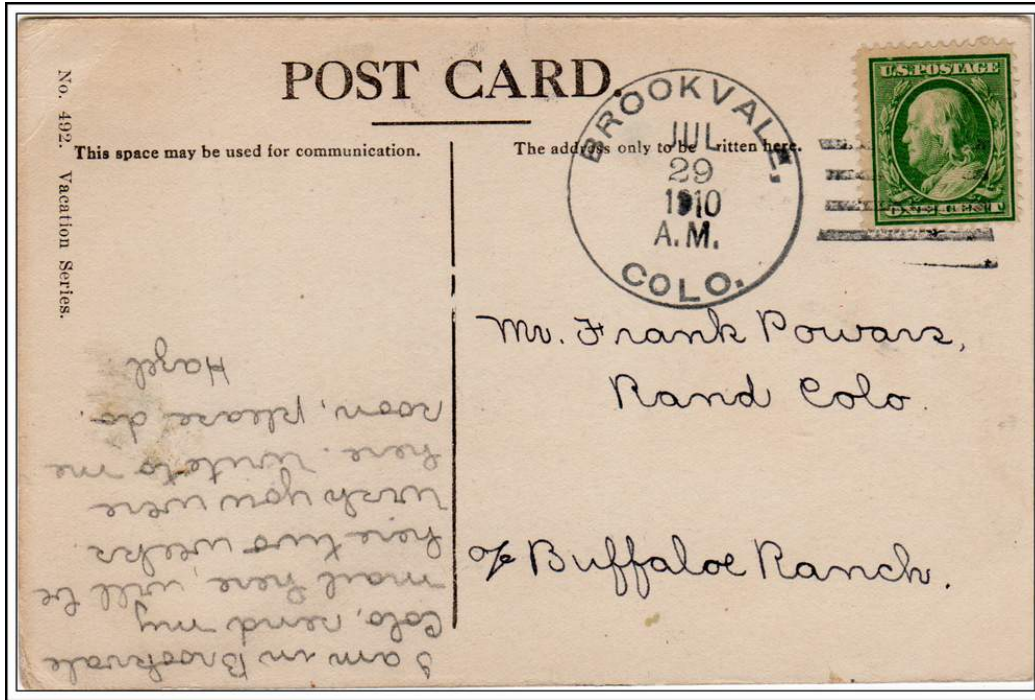
Return to the fork and turn west. Two miles should place you in the vicinity of the 1876 locations of Brookvale. Jim Ozment and I did not find anything conclusive in that area but we did see one pit alongside the road that could have been an attempt at mining. The 1941 location of Brookvale was at or a short distance south of the fork in the road from Evergreen. Most of the present day development is along the paved stretch of the road, back towards Evergreen.

Latitude = 39:37:47 North Longitude = 105:25:07 West

Chronology of the Post Office

May 22 1876	----	NE/4 Sec 9 T5S R72W	On the North side of Bear Creek
Jun 19 1876	----	NW/4 Sec 9 T5S R72W	On north side of Bear Creek
Jul 24 1876		Established	
Jul 24 1876		Sisty, Wilson E.	
Jan 3 1883		Discontinued	Mail to Evergreen
Mar 22 1883		Re-established	
Mar 22 1883		Sisty, Henry J.	
Sep 16 1885		Discontinued	Mail to Evergreen
May 21 1889	----	SW/4 Sec 14 T5S R72W	Proposed name "LAKEVIEW" – rejected Two miles south of the Bear River, and on the west side of Yankee Creek Proposed postmaster – Addie Ferran
Jun 14 1889		Re-established	
Jun 14 1889		Ferrare, Addie	[or Ferran?]
Oct 12 1894		Graham, Howard M.	
Sep 17 1900	----	From: SW/4 Sec 14 T5S R72W	To : SE/4 Sec 11 T5S R72W A move 1-1/4 miles northerly. 1/26 mile east of Yankee Creek
Jan 14 1901		Sprague, Cora A.	
Sep 23 1902		Mason, Emma L.	
Mar 12 1914	----	SE/4 SW/4 Sec 11 T5S R72W	¼ mile south of Bear Creek
Feb 1 1940		Mason, Leslie W.	Assumed charge
Feb 13 1940		Mason, Leslie W.	Acting
May 9 1940		Mason, Leslie W.	Commissioned
Nov 3 1941	----	SW/4 Sec 11 T5S R72W	Bear Creek north and northwest ¼ mile from post office
Apr 30 1942		Discontinued	Mail to Evergreen
May 6 1942		Ordered closed	

BROOKVALE – Continued

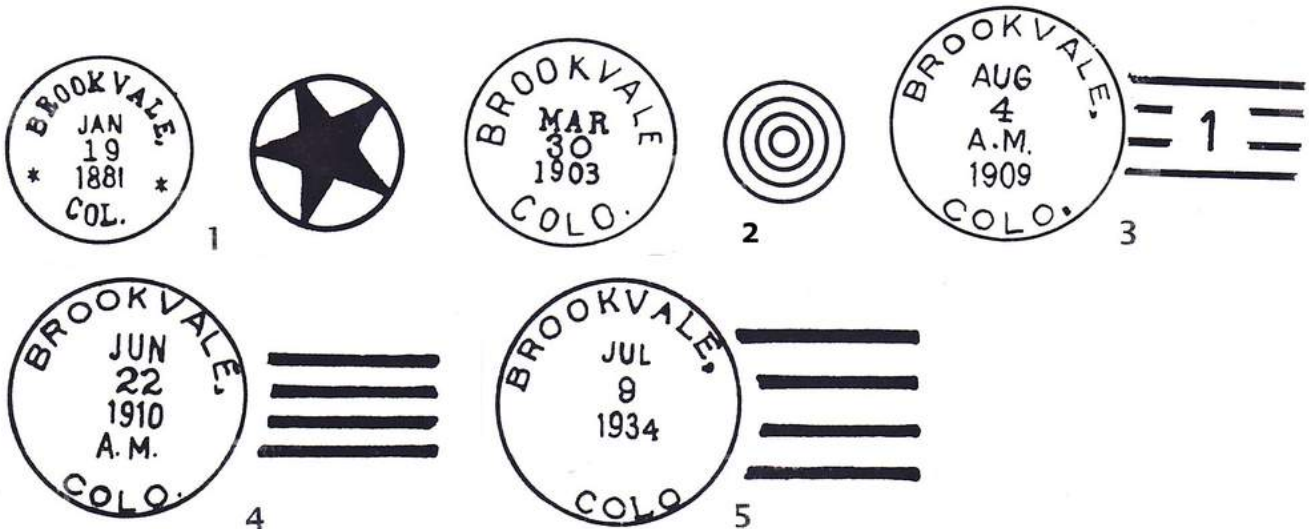


BROOKVALE, / COLO.

July 29, 1910

Confirmed types of postal markings

- | | | |
|---|-----------------------------------|--|
| 1 | BROOKVALE, / COL.
CI 10P 24.0 | Jan 5 1881 Mar 23 1881
Hstp Fancy, outline star-in-circle |
| 2 | BROOKVALE / COLO.
CI 10P 27.0 | Feb 1 1890 May 4 1903
Hstp Target, 4-ring 17mm |
| 3 | BROOKVALE, / COLO.
CI 10P 31.0 | Jul 30 1906 Aug 4 1909
Doane Type 3, with 1; |
| 4 | BROOKVALE, / COLO.
CI 10P 31.0 | Aug 21 1908 Jul 17 1912
4bars S-23x13mm |
| 5 | BROOKVALE. / COLO.
CI 10P 32.0 | Aug 27 1923 Dec 8 1941
4bars S-24x19mm |



BROWNSVILLE

The proper spelling for the name of this post office varies. Some sources spell it Brownsville while others omit the "s" and spell it Brownville.

The settlement began in the late 1860's with the discovery of silver by William Brown. His mine took his name and the community that grew around the mine also adopted the name. By 1875, the community of Silver Plume was rapidly expanding to the west and Brownsville lost its post office to Silver Plume and became merely a suburb of the much larger town.

In the 1880's, Marcus Mills Pomeroy began construction of the Atlantic Pacific Tunnel and until the tunnel financing collapsed, Brownsville was the home for workers on that fanciful project. Some historians ignore the earlier history of Brownsville and mention it only as related to the tunnel project.

Brownsville came to sudden end in June 1912 when a huge mud, rock and tailings slide came from the north, down Brown Gulch and buried the few remaining buildings at Brownsville. Fortunately there was enough warning for the residents to flee and no one was killed by the slide.

The site of Brownsville is just west of Silver Plume, on the north side of Interstate 70 and immediately east of where the frontage road passes under the Interstate. There are a few small, decrepit structures and many remnants of the early mining activity at this location. Because of the interstate, it is a difficult site to photograph.

This is another instance where the Geographic Site Location Report for a Clear Creek County town has been misfiled. This one is filed with the Gilpin County reports.

Chronology of the Post Office

Feb 23 1871 ---- No reported survey On the north side of Clear Creek, Georgetown 4 miles east.
 Apr 7 1871 Established
 Records of postmaster appointments are missing
 May 12 1871 ---- SW/4 Sec 13 T4S R75W On the north side of Clear Creek
 Dec 1 1875 Moved to Silver Plume

Confirmed types of postal markings

NO POSTAL MARKINGS HAVE BEEN REPORTED FROM BROWNSVILLE

DUMONT

This site was occupied as early as 1859 and was named Mill City. Appropriately the settlement was the location of several mills processing ore from mines in the surrounding area. By the late 1870's the mining activity had declined severely. Mine owner John M. Dumont undertook to revive the mines and the town and in 1880 the town and post office were renamed in his honor.

Dumont's revival of the mines did not last very long. However, the community of Dumont and its post office are still in existence.

The location, on Interstate 70, is at the junction of Mill Creek and Clear Creek, about four miles west of Idaho Springs. There are a few residences and some small roadside businesses that serve travelers on the interstate as well as the local residents.

Latitude = 39:45:53 North Longitude = 105:35:59 West

Chronology of the Post Office

May 3 1880 ---- NE/4 Sec 30 T3S R73W North side of Clear Creek,
 Spanish Bar is 3 miles easterly.
 Proposed postmaster - Henry W. Larraway
 May 17 1880 Established
 May 17 1880 Larraway, Henry W.
 Nov 27 1885 Doyle, Michael

**COLORADO POSTAL ENCYCLOPEDIA
CLEAR CREEK COUNTY**

DUMONT – Continued

Jan 7 1897	Chinn, Richard P.	
Apr 14 1901	Friend, Marcus L.	
Mar 27 1903	Stephens, Philip T.	
Sep 10 1904	Chinn, Richard P.	
May 24 1909	Hunt, Stella M.	Confirmed
Jun 24 1909	Hunt, Stella M.	Commissioned
Jun 30 1909	Hunt, Stella M.	Assumed charge
Feb 1 1940	Hunt, Emmons J.	Assumed charge
Feb 12 1940	Hunt, Emmons J.	Acting
Mar 5 1940	Myers, Mrs. Lou E.	Acting
Mar 27 1940	Myers, Mrs. Lou E.	Acting
Apr 1 1940	Myers, Mrs. Lou E.	Acting
Oct 12 1940	Moore, Mrs. Helen B.	Confirmed
Nov 4 1940	Moore, Mrs. Helen B.	Commissioned
Nov 15 1940	Moore, Mrs. Helen B.	Appointment rescinded
Feb 20 1941	Disque, Helen L.	Name change by marriage
Feb 21 1941	Osborn, Helen L.	Possession
Feb 22 1941	Osborn, Helen L.	Assumed charge
Mar 20 1941	Osborn, Helen L.	Acting
Jun 25 1941	Disque, Helen L.	Confirmed
Jul 30 1941	----	400 feet north of Clear Creek on north side of US-40. Map shows it on the Northeast corner of Hill St and US-40, being moved from a location just south of Clear Creek, on west side of Hill street.
Aug 1 1941	Disque, Helen L.	Commissioned
Aug 15 1941	Disque, Helen L.	Possession
Aug 16 1941	Disque, Helen L.	Assumed charge
Oct 22 1941	----	NE/4 Sec 30 T3S R73W Mill Creek 1/4 mile west from office North side of highway US-40, 10 feet from road
Jun 30 1955	Wagner, Mildred N.	Assumed charge
Jul 29 1955	Wagner, Mildred N.	Acting
Aug 12 1955	Wagner, Mildred N.	Confirmed
Sep 19 1955	Wagner, Mildred N.	Commissioned
Sep 30 1955	Wagner, Mildred N.	Possession
Jul 1 1956		Office made Presidential
Jun 30 1973	Fiedler, Joyce A.	Officer in charge
Sep 15 1973	Fiedler, Joyce A.	Postmaster Sep 15, 1973
Apr 18 1980	Frazier, Jeannette A.	Officer in charge
Jun 23 1980	Petty, Lewis R.	Officer in charge
Aug 9 1980	Coehringer, Donald C.	Appointed

Confirmed types of postal markings

1	DUMONT, / Clear Creek Co., Colo. OV 20T 38x24/35.5x21.5	Hstp Not reported	Dec 1 1883
2	DUMONT / COLO. CI 10P 27.0	Hstp Target, 4-ring	17mm Sep 15 1886 Sep 21 1895
3	DUMONT / COLO. CI 10P 28.0	Hstp Target, 4-ring	Nov 7 1898 Oct 18 1899
4	DUMONT / COLO. CI 10P 28.0	Dplx Grid, 9 bar oval	Mar 4 1904 Jul 30 1906
5	DUMONT / COLO. CI 10P 31.5	4bars S-23x13mm	Mar 31 1908 Sep 9 1909
6	DUMONT, / COLO. CI 10P 32.0	4bars s-24x19mm	Nov 19 1913 Oct 28 1934
7	DUMONT / COLO. CI 10P 32.0	4bars s-23x19mm	Aug 15 1939 Oct 9 1948

DUMONT – Continued

8	DUMONT / COLO. CI 10P 34.0	4bars S-27x22mm	Oct 2 1950
9	DUMONT / COLO. CI 10P 40.0	4bars S-??x24mm	Sep 25 1951
10	DUMONT / COLO. CI 11P 33.0/20.0	Hstp No killer	Nov 1 1952 Sep 30 1953
10.1	DUMONT, / COLO. RC 10P 37.0x17.5	Hstp No killer, Parcel Post Box	1950s [NOT AVAILABLE FOR ILLUSTRATION]
11	DUMONT / COLO. CI 10P 33.0	4bars S-24x20mm	Apr 24 1958 Oct 9 1964
12	DUMONT, CO / 80436 CI 10P 32.5	4bars S-24x18mm	Oct 21 1967 Jun 17 1981
13	DUMONT, CO / 80436 CI 10P 38.0	4bars S-27x22mm	Dec 13 1976 Feb 20 1987
14	DUMONT, CO / 80436 CI 10P 35.0	4bars S-25x20mm	Feb 4 1985
15	DUMONT, CO / 80436 CI 10P 32.0	4bars S-24x19mm	May 14 1991 Sep 23 1993



1



2



3



4



5



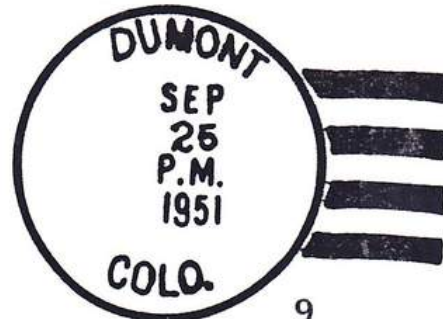
6



7



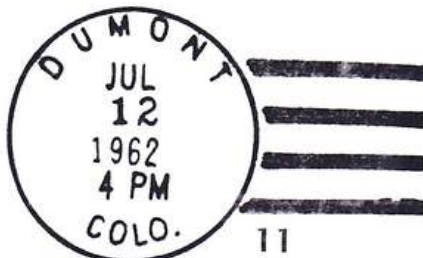
8



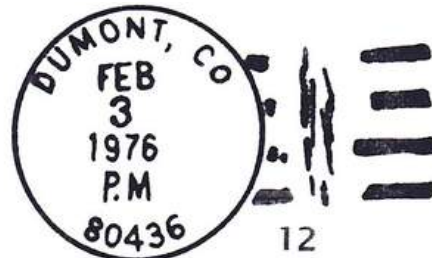
9



10



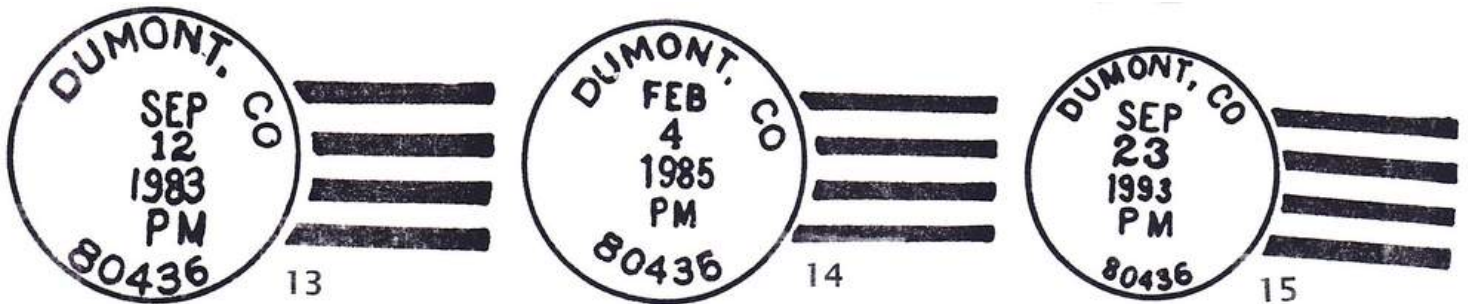
11



12



DUMONT – Continued



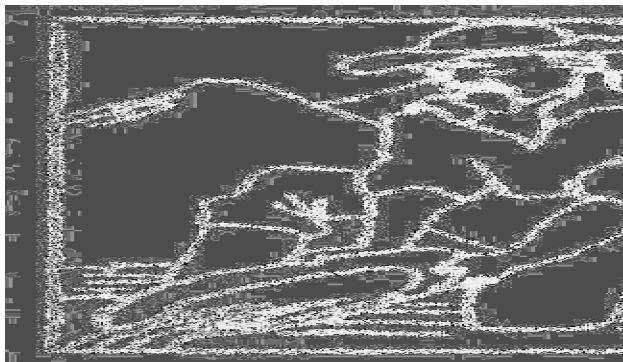
150TH GOLD RUSH ANNIVERSARY STATION

Chronology of the Post Office

Jan 7 2009 Operated as a Special Commemorative Station

Confirmed types of postal markings

1 Dumont, CO 80436 // 150th Gold Rush / Anniversary Station Jan 7 2009
IR 00R 77.0x44.0 Pict Scene - Miner panning for gold; Text - 1859 - 2009



EAST ARGENTINE

This post office existed for little more than three months in 1867. It would not be unlikely that it was never actually in operation.

I must confess that I am very uncertain as to where it might have been located. All that is known is that it was seven miles south of Georgetown. There are three possibilities for a location in that area.

If Georgetown was, “seven miles north” as was reported in the Post Office Department Geographic Site Location Report, that would place the location at the point where the road over Guanella Pass begins the final climb to the pass. There is a Forest Service campground there and some faintly visible signs of mining activity.

The Colorado Writers Project, *Place Names in Colorado* makes mention of a map that, “shows it (East Argentine) south-southwest of Georgetown, 7 miles.” That could be near the site of Waldorf. Entries in the *Rogers File* of location data seem to support that thought, so perhaps it was a very early attempt at mining at or near Waldorf that failed because of the remote location. The third, but least likely possibility is that East Argentine was a prospect at what later became the Sidney Mine. The Sidney is about two miles down Leavenworth Creek from Waldorf.

EAST ARGENTINE – Continued

When Jim Ozment and I visited the area in September 1998 we photographed the site at the foot of Guanella Pass and also visited and photographed Waldorf. I am personally familiar with the Sidney Mine since in July 1958 I was working a claim-surveying project in the Leavenworth Creek Valley. We used the old Sidney tunnel to store dynamite that we employed to remove trees from our lines of sight. A quarter stick was usually sufficient to clear the way except for one time when all that we accomplished was to move the tree six inches further along the line of sight and leave it standing.

Chronology of the Post Office

Aug 1 1867	---	"East Argentine is unsurveyed" Georgetown seven miles north
Aug 26 1867		Established
Aug 26 1867		Vance, Emory J.
Nov 15 1867		Discontinued

Confirmed types of postal markings

NO POSTAL MARKINGS HAVE BEEN REPORTED FROM EAST ARGENTINE

ELEPHANT

The Red Elephant Post Office was discontinued in April 1881. It was revived briefly from June to November of the same year, but with the shorter name of Elephant.

Please refer to the discussion of Red Elephant for the history of this office and its location.

Chronology of the Post Office

Jun 28 1881		Established
Jun 28 1881		Jenkins, Evan
Nov 7 1881		Discontinued

Confirmed types of postal markings

NO POSTAL MARKINGS HAVE BEEN REPORTED FROM ELEPHANT

EMPIRE

I have not seen an explanation of why the name of Empire City was shortened to Empire. In the mid-1890's the Post Office Department undertook a wholesale conversion of multi-word names to single words. This effort included modernizing spellings and dropping superfluous words. The conversion to Empire precedes that effort by several years. Refer to Empire City for the history of this site.

Latitude = 39:45:41 North Longitude = 105:41:02 West

Chronology of the Post Office

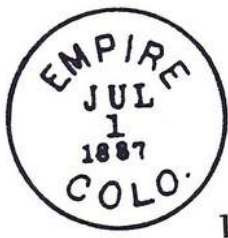
Apr 13 1887	---	T3S R74W 600 feet north of Middle Clear Creek
May 7 1886		Name changed from Empire City
May 7 1886		Van de Vort, Joseph
Sep 5 1887		Robinson, Emma E.
Jan 13 1888		Van Antwerp, Emma E.
Aug 22 1889		Elliott, John F.
Oct 12 1889		Van Antwerp, George W.
Feb 24 1899		Avery, William E.
Apr 9 1908		Jones, Margaret A.
Aug 5 1909		Jones, William H.
Feb 26 1914	----	NE/4 Sec 29 T3S R74W 1000 feet north of Middle Clear Creek
Dec 22 1914		Horstmann, August H. J.
Jul 19 1917		McCain, Harry

EMPIRE – Continued

Aug 1 1922	Nelson, Tulley N.	Assumed charge
Sep 29 1922	Nelson, Tulley N.	Confirmed
Aug 10 1932	Nelson, Tulley N.	Commissioned
Jul 1 1937		Office made Presidential
Apr 5 1938	Nelson, Tulley N.	Nominated
Apr 8 1938	Nelson, Tulley N.	Confirmed
Apr 12 1938	Nelson, Tulley N.	Appointed Presidential
Apr 26 1938	Nelson, Tulley N.	Commissioned
May 2 1938	Nelson, Tulley N.	Assumed charge
Jul 1 1938		Relegated
Aug 10 1938	Nelson, Tulley N.	Confirmed
Sep 14 1938	Nelson, Tulley N.	Commissioned
Sep 30 1938	Nelson, Tulley N.	Possession
Oct 20 1941 ----	NE/4 Sec 29 T3S R74W North Branch of Clear Creek, 1/4 mile to south	
Jul 1 1957		Office made Presidential
Sep 27 1963	Warren, Isis S.	Acting
Jul 26 1965	Ruhter, Edward G.	Appointed Presidential & Confirmed
Aug 5 1965	Ruhter, Edward G.	Commissioned
Aug 13 1965	Ruhter, Edward G.	Assumed charge
Nov 9 1967	Warren, Mrs. Isis S.	Acting
May 29 1971	Warren, Mrs. Isis S.	Appointed & Assumed charge
Nov 18 1977	Trajillo, Frankie J.	Officer in charge
Apr 4 1978	Keim, Charlotte A.	Officer in charge
Oct 20 1978	Matlock, Ramona	Officer in charge
Jan 13 1979	Custer, Gale R.	Officer in charge
Jan 24 1980	Sanchez, Patricia B.	Officer in charge

Confirmed types of postal markings

1	EMPIRE / COLO. CI 10P 28.0	Jul 1 1887
2	EMPIRE / COLO. CI 10P 27.0	Hstp Not recorded
3	EMPIRE / COLO. CI 10P 29.5	Nov 1 1887 Jun 2 1889
4	EMPIRE / COLO. CI 10P 30.0	Hstp Cork, smudge; Fancy, large positive "E"
5	EMPIRE, CO / 80438 CI 10P 33.0	Dec 12 1902 Jul 21 1919
6	EMPIRE, CO / 80438 CI 10P 31.0	Dplx Grid, 9 bar oval
7	EMPIRE, CO / 80438 CI 10P 33.0	May 3 1939 Aug 22 1960
8	EMPIRE, CO / 80438 CI 10P 31.5	Dplx Grid, Pointed, with 1
9	EMPIRE, CO / USPO CI 11P 29.0/19.0	Oct 2 1965 Nov 18 1969
		4bars S-24x20mm
		Oct 20 1970 Nov 17 1987
		4bars S-25x20mm
		Apr 14 1989 Dec 4 1991
		4bars S-25x19mm
		Jun 5 1991 Jul 24 2001
		4bars S-24x19mm
		Sep 23 1993
		Hstp No killer



1



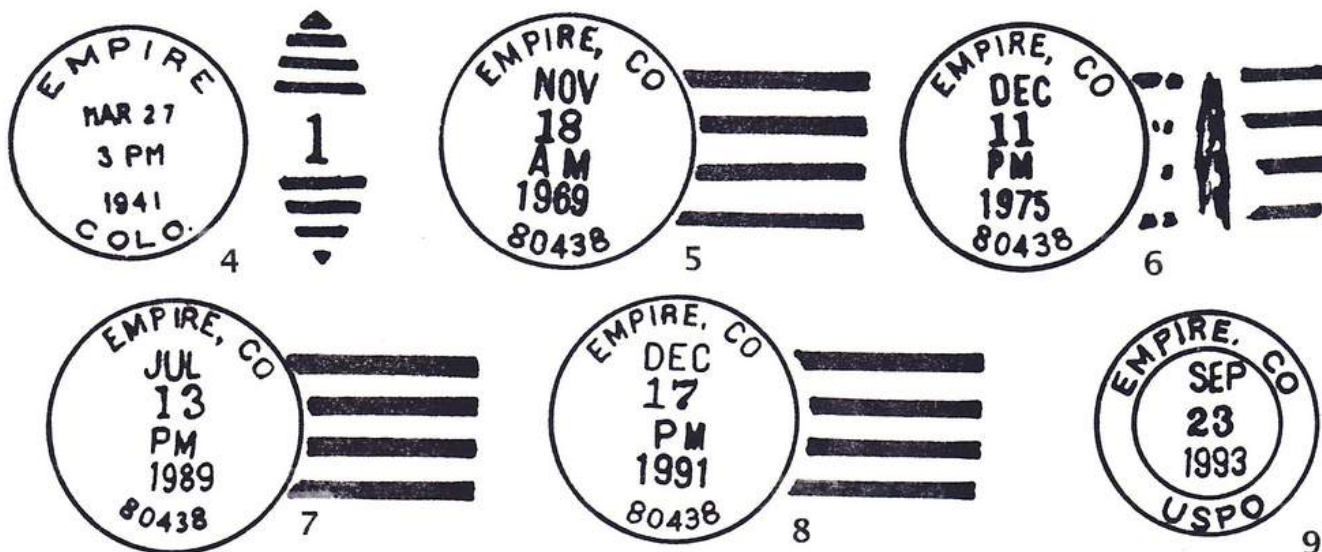
2



3



EMPIRE – Continued



150TH GOLD RUSH ANNIVERSARY STATION

Chronology of the Post Office

Jan 7 2009 Operated as a Special Commemorative Station

Confirmed types of postal markings

- 1 Empire, CO 80438 // 150th Gold Rush / Anniversary Station Jan 7 2009
IR 00R 76.0x44.0 Pict Scene - Miner panning for gold; Text - 1859 - 2009



**150th Gold Rush
Anniversary Station
1859 - 2009**

January 7, 2009
Empire, CO 80438

1

EMPIRE CITY

In 1860, four prospectors from Spanish Bar found flakes of gold in the valley where Empire is located today. George Merrill and Joseph Musser built a cabin where Bard Creek, Lion Creek and the West Fork of Clear Creek come together. The Valley City Town Company was organized but it soon dissolved. With the arrival of Henry DeWitt Clinton Cowles a new name, Empire City was given to the young settlement. Cowles was from New York, the Empire State.

On April 12, 1882 the town was incorporated but as Empire, not Empire City. The post office retained the “City” until 1886 when the name was brought into line with that of the incorporated town.

EMPIRE CITY – Continued

Empire City or Empire, enjoyed an up and down prosperity. Following the initial gold discoveries Empire City grew to a population of perhaps 1,000. Then, discoveries of rich silver deposits at Georgetown and other nearby locations depleted the population of Empire City; however, it revived with new gold finds and with silver mining as well. The town continued to be a mining community until the early part of the twentieth century.

Empire City was also fortunate in having a location on the road over Berthoud Pass to the Middle Park area. In that position it was a supply point for travelers and a stage stop on the road into Middle Park.

Empire City, now simply Empire, continues to serve travelers on the Berthoud Pass Road, the famous US Highway 40. It is a modest residential community with a supply of small stores, antique shops and souvenir stands. Empire is a little more than a mile west of the major intersection where US 40 separates from Interstate 70.

Descriptions of early day travel tell of going up the West Fork of Clear Creek, through Empire and then over Empire Pass and down to the South Fork of Clear Creek. From present day knowledge this seems to be a more difficult route to Georgetown than simply following Clear Creek as Interstate 70 does today. Does anyone know the reason for the more circuitous route?

Chronology of the Post Office

Jun 28 1861	Established
Jun 28 1861	Merriman, Nathaniel
Feb 19 1863	Dripps, James W.
	There is a gap in the Records of Postmaster Appointment
Feb 2 1871 ----	Sec 29 T3S R74W North bank of Clear Creek, 1/4 mile northeast of Bard Creek
Sep 24 1877	Vivian, Charles J.
Apr 27 1880	Hanchett, Silas
Feb 18 1885	Bates, Thomas H.
May 7 1886	Name changed to Empire



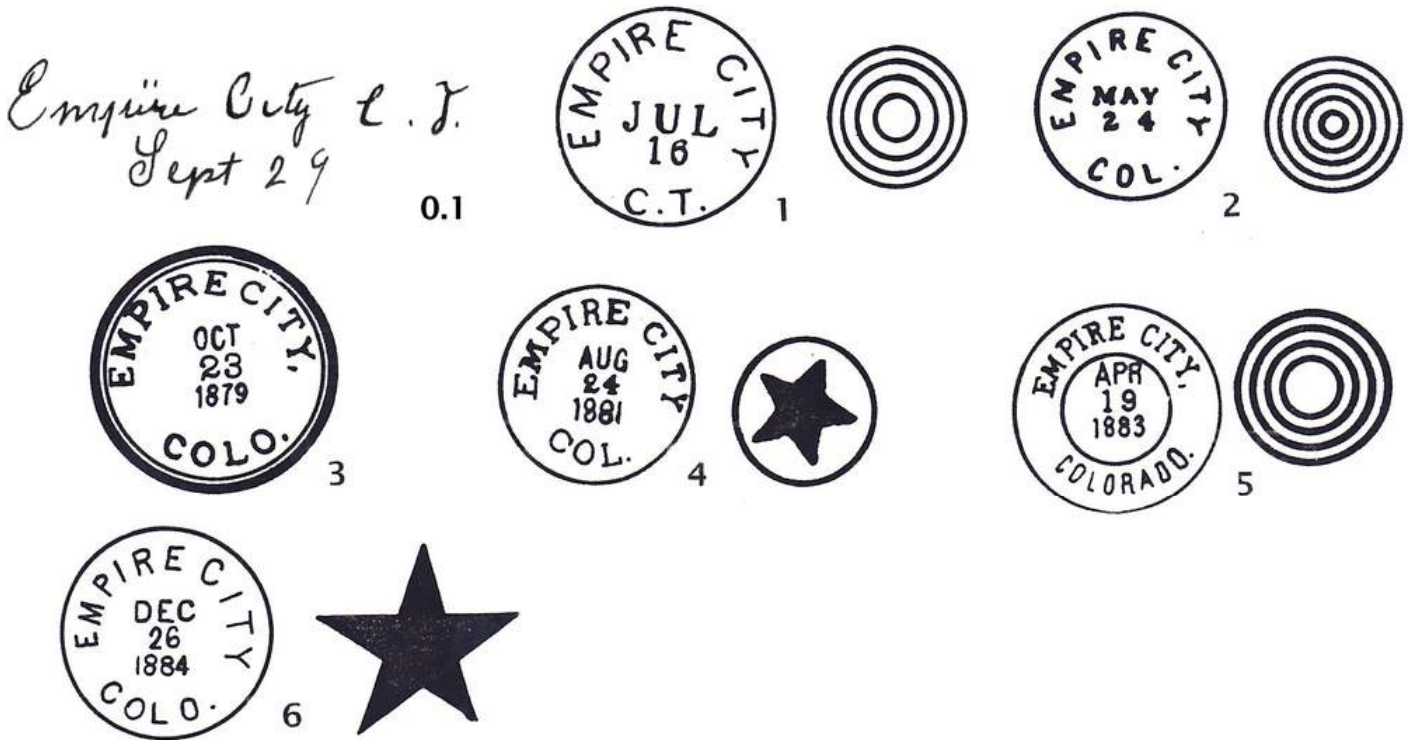
EMPIRE CITY, / COLO.

October 23, 1879

EMPIRE CITY – Continued

Confirmed types of postal markings

0.1	EMPIRE CITY C.T. MS	Sep 29 ---- Mscp Pen cancel
1	EMPIRE CITY / C.T. CI 10P 29.0	Jul 5 1866 Dec 11 1866 Hstp Target, 4-ring 18mm
2	EMPIRE CITY / COL. CI 10P 24.0	Apr ? 1870 Sep 2 1872 Hstp Target, 5 ring 18mm
3	EMPIRE CITY, COLO. CI 20H 33.0/28.5	Oct 23 1879 Nov 18 1879 Hstp Target, 3-ring 21mm
4	EMPIRE CITY / COL. CI 10P 25.0	Sep 20 1880 Aug ? 1881 Hstp Fancy, star-in-circle
5	EMPIRE CITY, / COLORADO CI 11P 27.0/15.0	Apr 19 1883 Aug 13 1883 Hstp Target, 4-ring 20mm
6	EMPIRE CITY / COLO. CI 10P 27.0	Dec 26 1884 Feb 1 1885 Hstp Fancy, Positive star



FLOYD HILL

Activity in the vicinity of Floyd Hill began with placer mining in the 1860's. The placers soon played out, but a small community developed at the foot of Floyd Hill where the steep wagon road from Bergen Park reached Clear Creek.

The name Floyd Hill predates the naming of the settlement. It was first applied to the hill on the south side of Clear Creek, which is separated from Saddleback Mountain by a shallow valley through which Interstate 70 now runs.

When the Colorado Central Railroad was building up Clear Creek Canyon, for a time Floyd Hill was the terminus with a high activity in transferring freight for the trip to the mining towns further west and shipping ore down to smelters in Golden and Denver. The railroad terminus soon moved west but Floyd Hill continued to serve as a transshipment point for businesses and ranches in the Bergen Park area.

FLOYD HILL – Continued

With the development of automobile traffic into the mountains, Floyd Hill became the junction point for US Highway 6 from Golden up Clear Creek Canyon and US Highway 40 through Bergen Park and down Floyd Hill. Most of this came to an end with the construction of Interstate 70 along the route of US 40. Much of the community disappeared in the construction of the interchange with US 6 and the remainder soon faded away. The opening of a large quarry opposite the remaining buildings ended all chance of any new development.

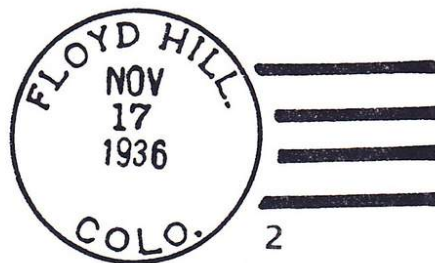
The site of Floyd Hill is immediately downstream from the interchange of I-70 with US 6 and directly across from the entrance to the quarry. In May 1998 there were still a few abandoned buildings at the site. By 2004 these buildings were gone.

Chronology of the Post Office

- Oct 1 1912 ---- SW/4 Sec 34 T3S R72W Colorado & Southern Floyd Hill Station
is 2000 feet east of Post Office, Clear creek 200 feet south
- Sep 9 1912 Established
- Sep 9 1912 Johnson, Nels C.
- Feb 23 1914 ---- SW/4 Sec 34 T3S R72W 20 feet north of Clear Creek.
North side of Wagon Road and Railroad, 150 feet from station.
Sketch map shows it west of Wagon Road and on south side of Clear Creek (?)
- Jun 17 1937 Ordered closed
- Jun 30 1937 Discontinued Mail to Evergreen
- Jun 29 1937 Modified Mail to Idaho Springs

Confirmed types of postal markings

- | | | | |
|---|------------------------------------|-----------------|------------------------|
| 1 | FLOYD HILL. / COLO.
CI 10P 32.0 | 4bars S-24x19mm | Nov 13 1912 Jul 7 1934 |
| 2 | FLOYD HILL. / COLO.
CI 10P 33.0 | 4bars S-24x19mm | Aug 7 1935 Dec 18 1936 |



FREELAND

A rich silver lode was discovered here in 1877. By 1878 a Georgetown newspaper reported that thirty-four homes were complete and operated in Freeland. The community took its name from the discovery lode—the Freeland.

J. D. Armstrong opened a grocery store and John T. Jones opened a meat market. When the Freeland Post Office opened in 1879, Armstrong was the postmaster and the office was located in his store. In addition to the stores there was a saloon and a school at Freeland.

Silver was the primary production, but gold and copper were also important sources of income for the Freeland and other mines in the vicinity.

FREELAND – Continued

Freeland was located on Trail Creek almost four miles due west of Idaho Springs and about a mile and a half down the creek from Lamartine. To reach the site, leave Interstate 70 at Exit 238 at the mouth of Fall River. Cross to the south side of Clear Creek and drive about a half mile back towards Idaho Springs to the road that goes up Trail Creek. A bit more than two miles from Clear Creek, a reasonably well preserved mine headframe marks the location of the Freeland Mine. There are other small buildings in the area and abundant evidence of the previous mining activity.

Latitude = 39:44:39 North Longitude = 105:35:42 West

Chronology of the Post Office

Jan 4 1879	---	Not reported South side of Trail Creek, 3 miles south of Clear Creek Proposed postmaster - John D. Armstrong
Jan 16 1879	---	SW/4 Sec 32 T3S R73W On north side of Trail Creek Proposed postmaster - John D. Armstrong
Jan 16 1879		Established
Jan 16 1879		Armstrong, Jonathan D.
Feb 28 1890		Knuckey, Richard
Sep 27 1892		Roberts, Jenkin
Dec 11 1896		Redding, Ometa
Jul 23 1900		Head, Mary A.
Feb 27 1902		Saundry, Mary A.
Aug 15 1908		Ordered closed
Sep 15 1908		Discontinued Mail to Lamartine

Confirmed types of postal markings

0.1	FREELAND. / COLORADO CI 10P 31.0	Hstp Target, 4-ring 18mm	Nov 13 1881	Nov 17 1881
1	FREELAND, / COLO. CI 10P 26.0	Hstp Cork, smudge	Jun 10 1882	Jan 26 1888
2	FREELAND / COLO. CI 10P 27.0	Hstp Target	Oct 5 1887	
3	FREELAND / COLO. CI 10P 27.0	Hstp Target, 4-ring 17mm	Apr 13 1889	Apr 2 1907

**GEORGETOWN**

Gold was first discovered in this area in 1859 by George and David Griffith. There was a small gold rush to the area but the placer gold soon gave out and the single lode mine was not very rich.

However, in 1864 the discovery of silver in the East Argentine District, followed by other discoveries centered on the former placer camp brought a revival.

GEORGETOWN – Continued

Two towns soon came into existence. One, on the flats near the head of the valley took the name of Georgetown for George Griffith. The second, at the foot of Leavenworth Mountain and separated from Georgetown by a swampy area was named Elizabethtown. Most commonly the claim is that Elizabeth was a sister of the Griffith brothers, however, some reports claim she was the wife of George Griffith.

The two towns were rivals but by 1866 when application was made for a post office, cooler heads prevailed and the towns merged as one—Georgetown. In 1867 Charles Hoyt resurveyed the town and when the plat was filed it was legally Georgetown. The town was incorporated January 10, 1868.

Georgetown became the center of the oldest silver-producing district in Colorado. The town flourished as a supply center for the mines of the surrounding countryside, but by 1893 production was already in decline and the end to the government support of the price of silver ended the boom years.

For many years, Georgetown had the benefit of a railroad connection to Denver, the Colorado Central Railroad. But, as motor traffic grew and railroad freight declined, the railroad was abandoned.

Mining did not cease until well into the twentieth century. Georgetown continued to exist as a quiet supply town with a modest number of permanent residents. With some good restaurants and a number of antique and specialty shops Georgetown was an attraction to the people of Denver.

In the later half of the twentieth century, the development of the Loveland Ski Resort, better highways and increased tourism put Georgetown back on the path of growth. A section of the railroad, including the famous Georgetown Loop was rebuilt and now operates as a tourist railroad.

A plan to build an outlet mall downstream from Georgetown met heavy opposition and it was not constructed. Many of the old buildings have been rehabilitated and there are some new apartments and condominiums. Georgetown has even become a far western suburb of Denver.

All in all, Georgetown retains much of its mining era charm, with easy access from Interstate 70.

Latitude = 39:42:22 North Longitude = 105:41:49 West

Chronology of the Post Office

Jun 18 1866	---	No survey On South Fork of Clear Creek	
Jun 19 1866		Established	
Jun 19 1866		Gray, William H.	
May 29 1867		Lafferty, John A.	
		There is a gap in the Records of Postmaster Appointment	
Feb 2 1871	---	Sec 17 T4S R74W 100 yards easterly from Clear Creek, 100 yards westerly from Leavenworth Creek	
Mar 24 1875		Cree, Alexander	P&S [Apptd by President & confirmed by Senate]
May 22 1878		Parmalee, Edwin C.	P&S
May 17 1882		Jacobson, Charles H.	P&S
May 28 1886		Bennett, Silas C.	P&S
Sep 25 1886		Forest, James W.	P
Dec 20 1886		Forest, James W.	P&S
Nov 12 1890		Nichols, Charles J.	P
Dec 6 1890		Nichols, Charles J.	P&S
Jan 15 1895		Bullock, Horace	P&S
Feb 15 1899		Hamill, Hockley	P&S
Feb 28 1903		Hamill, Hockley	P&S
Jan 30 1907		Hamill, Hockley	P&S
Feb 23 1911		Hamill, Hockley	P&S
Mar 5 1914	---	SE/4 SW/4 Sec 8 T4S R74W 450 feet west of Clear Creek	
Jan 30 1915		O'Connell, Sarah J.	P&S
Aug 29 1919		O'Connell, Sarah J.	P&S
Jan 23 1923		Trumble, Lula D.	Acting
Dec 18 1923		Trumble, Lula D.	Appointed

GEORGETOWN – Continued

Dec 17 1927	Trumble, Lula D.	Appointed
Jan 4 1932	Trimble, Lula D.	Nominated
Jan 22 1932	Trimble, Lula D.	Confirmed
Feb 24 1932	Trimble, Lula D.	Commissioned
May 7 1936	Ricci, Anthony J.	Nominated
May 13 1936	Ricci, Anthony J.	Confirmed
May 19 1936	Ricci, Anthony J.	Appointed Presidential
Jul 1 1936	Ricci, Anthony J.	Assumed charge
Sep 13 1936	Ricci, Anthony J.	Commissioned
Sep 30 1936	Ricci, Anthony J.	Assumed charge
Aug 19 1940	Ricci, Anthony J.	Nominated
Aug 24 1940	Ricci, Anthony J.	Confirmed
Aug 29 1940	Ricci, Anthony J.	Appointed Presidential
Oct 21 1941 ----	6th & Rose Streets; NW/4 Sec 17 T4S R74W Clear Creek 200 feet west of post office	
Jun 30 1951	Haskins, Harold D.	Assumed charge
Jul 18 1951	Haskins, Harold D.	Acting
Apr 21 1952	Haskins, Harold D.	Nominated
May 21 1952	Haskins, Harold D.	Confirmed
May 22 1952	Haskins, Harold D.	Appt'd Presidential & Commissioned
Jun 30 1952	Haskins, Harold D.	Assumed charge
Dec 1 1979	Haskins, Alyce G.	Appointed



The Georgetown Post Office

Photograph by James L. Ozment

May 10, 1998

GEORGETOWN – Continued

Confirmed types of postal markings

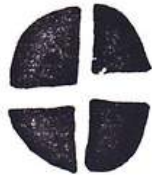
1	Georgetown, Col T MS	Mscp Pen cancel	Aug 6 1866 Sep 30 1867
2	GEORGETOWN / COL.T. CI 10P 25.5	Hstp Target, 4-ring 18mm	Sep 26 1868 Nov 15 1869
3	GEORGETOWN / COLO. CI 10P 26.0	Hstp Cork, Negative X-roads, double grid, 8-piece pie	Jul 26 1871 Jun 19 1880
4	GEORGETOWN, COL. / Registered SL 00P 42.0x11.0	Hstp Pen Cancel, Manuscript 'Registered', date from contents [NOT AVAILABLE FOR ILLUSTRATION]	Oct 27 1877
5	GEORGETOWN, (Clear Creek / County,) COLORADO. CI 21H 33.0/31.5/21.5	Hstp Pen cancel and "12855", registered cover	Mar 12 1878
6	GEORGETOWN / COLO. CI 10P 27.0	Hstp Cork, Negative X-roads, smudge	Apr 14 1879 Nov 7 1884
7	GEORGETOWN / COLO. CI 10P 27.0	Hstp Cork, smudge	Feb 15 18-- Jun 19 18--
7.v	GEORGETOWN / COLO. CI 10P 27.0	Hstp Cork, smudge	Sep 16 1889
8	GEORGETOWN / COL. CI 10P 27.0	Hstp Cork, smudge, Negative X-roads, Time of day, No year	Jun 3 1885 Feb 10 1887
8.v	GEORGETOWN / COL. CI 10P 27.0	Hstp Cork, Negative cross-roads	Feb 16 1886 Aug 2 1887
8.1	GEORGETOWN, COL. / REC'D. CI 10P 27.0	Hstp No killer, backstamp [NOT AVAILABLE FOR ILLUSTRATION]	Aug 16 1886
9	GEORGETOWN / COLO. CI 10P 28.0	Hstp Cork	Mar 13 1889 Dec 17 1894
10	GEORGETOWN / COLO. CI 10P 28.0	Hstp Cork, Negative X-roads, smudge	May 3 1895 Jun 6 1898
11	GEORGETOWN / COLO. CI 10P 28.0	Dplx Grid, 9 bar oval	Feb 7 189- May 11 1904
11.1	GEORGETOWN, / COLO. RC 10P ?? x ??	Hstp No killer, Parcel Post Box [NOT AVAILABLE FOR ILLUSTRATION]	1900s
12	GEORGETOWN / COLO. CI 10P 28.0	Dplx Grid, 9 bar oval	Jul 4 1903 Sep 5 1905
13	GEORGETOWN, COLO. / REC'D. CI 10P 29.0	Hstp No killer	Sep 5 1905
14	GEORGETOWN / COLO. CI 10P 30.0	Dplx Grid, 9 bar oval	Jan 1 1906 Aug 13 1911
15	GEORGETOWN / COLO. CI 10P 29.0	Dplx Grid, 9 bar oval	May 30 1934 Dec 22 1934
16	GEORGETOWN / COLO. CI 10P 30.0	Dplx Grid, oval with 1	Mar 23 1936 Oct 7 1963
16.1	GEORGETOWN, / COLO. RC 10P ?? x 16.0	Hstp No killer, Parcel Post Box	1940s
17	GEORGETOWN / COLO. CI 11P 28.0/18.0	Hstp No killer	May 26 1953
18	GEORGETOWN, CO / 80444 CI 10P 33.0	4bars S-22x19mm	Jun 7 1965 Oct 29 1985
19	GEORGETOWN, CO / USPO CI 11P 27.5/17.5	Hstp No killer	Apr 20 1987 May 2 1989
20	GEORGETOWN, CO / 80444 CI 10P 30.5	4bars S-23x18mm	Dec 13 1991
21	GEORGETOWN CO / 80444 CI 10P 31.0	4bars S-23x17mm	Apr 15 1993

GEORGETOWN – Continued

Georgetown Sept 30

Georgetown Sept 30

Georgetown July 9



GEORGETOWN – Continued

**GEORGETOWN,
COLO.**

16.1



17



18



19



20



21

GEORGETOWN STATIONS

GEORGETOWN LETTER DAY STATION

Chronology of the Post Office

- Nov 28 1999 Operated as a Special Commemorative Station
- Nov 26 2000 Operated as a Special Commemorative Station
- Nov 30 2003 Operated as a Special Commemorative Station
- Nov 28 2004 Operated as a Special Commemorative Station

NOTE: It is possible that this station was in operation in 1998, 2001 and 2002, but I have not seen an announcement of the stations or special postmarks from those years.

Confirmed types of postal markings

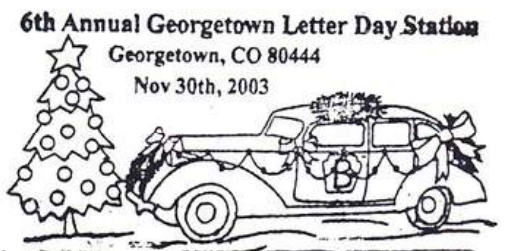
- 1 GEORGETOWN, CO 80444 (2ND ANN. / GEORGETOWN / LETTER DAY / STA.) Nov 28 1999
IR 00R 59.0x37.0 Pict Scene: "CDS" is within a Christmas ornament.
- 2 GEORGETOWN, CO 80444 (3RD ANN. / GEORGETOWN / LETTER DAY / STA.) Nov 26 2000
IR 00R 57.0x38.0 Pict Scene: "CDS" is within a Christmas ornament.
- 3 Georgetown, CO 80444 // 6th Annual Georgetown Letter Day Station Nov 30 2003
IR 00R 60.0x30.0 Pict Scene - Decorated tree and automobile
- 4 Georgetown, CO 80444 // 7th Annual Georgetown Letter Day Station Nov 28 2004
RC 10P 73.0x36.0 Pict Scene - Horse pulling sleigh through gateway, house, trees
- 5 Georgetown, CO 80444 // 10th Annual Georgetown Letter Day Station Nov 24 2007
RC 10P 80.0x40.0 Pict Scene - Automobile with banner "Georgetown", two trees, mountain profile



1

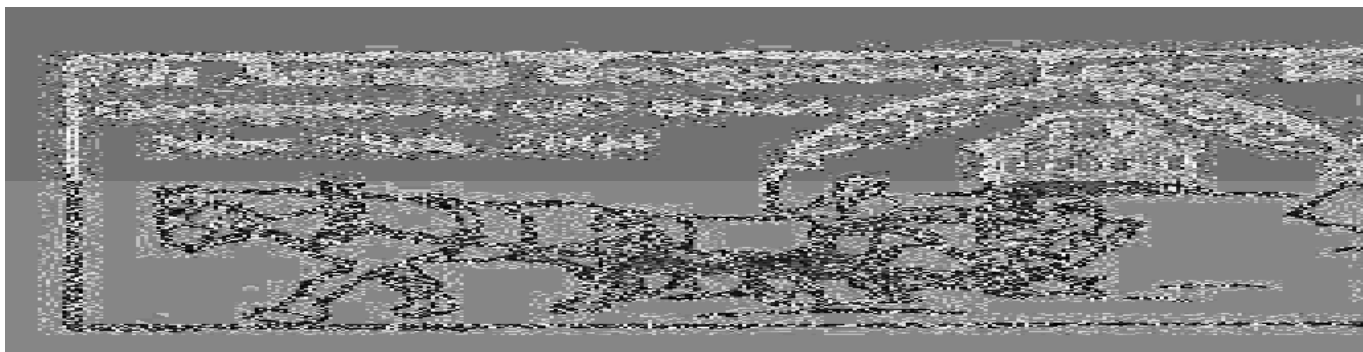


2



3

GEORGETOWN STATIONS – Continued
GEORGETOWN LETTER DAY STATION – Continued



150TH GOLD RUSH ANNIVERSARY STATION

Chronology of the Post Office

Jan 7 2009 Operated as a Special Commemorative Station

Confirmed types of postal markings

1 Georgetown, CO 80444 // 150th Gold Rush / Anniversary Station Jan 7 2009
 IR 00R 76.0x44.0 Pict Scene - Miner panning for gold; Text - 1859 - 2009



GRAYMONT

In 1865 John Baker discovered gold ore on Kelso Mountain but development of the mine did not begin until 1869. Coincident with development of the mine a community was created along Clear Creek below the mine. This settlement took the name of Bakerville for John Baker.

By 1884 the Georgetown, Breckenridge and Leadville Railroad had extended its tracks as far as Bakerville. The Colorado Central, a subsidiary of the Union Pacific Railroad, operated the trains. Rather than contend with the existing landowners at Bakerville the railroad established another settlement next to Bakerville and gave it the name Graymont, for Gray's Peak. The twin sites were at the place where Quayle Creek joins Clear Creek. Bakerville was to the west of Quayle Creek and Graymont was to the east. This is the now the location of Exit 221 from Interstate 70.

Graymont was the home of the Jennings Hotel, a boxcar that served as a depot, a wye for turning trains and several houses that were rented to tourists. Tourists could rent horses for a ride to the summit of Gray's Peak.

GRAYMONT – Continued

There were many plans to extend the rails over Loveland Pass to the western slope but none went much beyond paper plans. The portal of R. A. Pomeroy’s Atlantic-Pacific Tunnel was about a mile east of Graymont and some of the workers were residents at Graymont. The tunnel was never completed and soon the rails were removed back to Silver Plume and only resort activity remained.

Many years later, a successor to the Jennings Hotel was the Highlands Lodge. That structure burned to the ground in the 1980’s and for many years only the chimney was left standing. Recently a few seasonal homes have been constructed in the Graymont-Bakerville area, but no early structures remain.

Another factor in the history of this site is the post office named Yates. That office preceded the one at Graymont and the arrival of the railroad and it seems most likely that it was at Bakerville. Both of these post offices lasted only a few months.

Latitude = 39:41:40 North Longitude = 105:48:00 West

Chronology of the Post Office

May 3 1884	----	Unsurveyed public lands On Clear Creek. It is on the line of the Georgetown, Breckenridge, and Leadville, south side; about 60 feet from track, station named Graymont Proposed postmaster - John D. Jennings
May 19 1884		Established
May 19 1884		Jennings, John D.
Oct 16 1884		Discontinued Mail to Silver Plume

Confirmed types of postal markings

NO POSTAL MARKINGS HAVE BEEN REPORTED FROM GRAYMONT

HUKILL

Very little has been written about Hukill. Kenneth Jessen in *Ghost Towns Colorado Style - Volume 1* writes that, “The Hukill Mine, its headframe and buildings still stand today on an isolated narrow piece of land bounded by I-70 on the north and Clear Creek on the south.” This brief comment does not agree with the Geographical Site Location Reports, which place Hukill on the south side of Clear Creek. The problem is further complicated in that Hukill and Spanish Bar were both reported to the Post Office Department as being in Section 34, Township 3 South, Range 73 West and both in operation during 1879 and 1880. That seems unreasonable; a possible explanation is that the Spanish Bar Post Office was north of Clear Creek and Hukill was south of Clear Creek.

A note on the Post Office Department Geographic Site Location Report, where Spanish Bar is crossed out and Hukill has been written in, could indicate that there was an intention to move the Spanish Bar Post Office to the site that became Hukill. But it was decided to retain the Spanish Bar Post Office and establish another post office, Hukill.

It is clear that Hukill was a mining community.

From Exit 238, the exit to Alice, drive under the interstate and on the south side of Clear Creek turn back towards Idaho Springs. You will pass the Trail Creek Road to Freeland and Lamartine and the Stanley Mine complex. A half-mile from the turn you can observe the remains of a large mine that was on the north side of Clear Creek and is now isolated from the north by Interstate 70. I believe that this was the location of the Hukill Mine. The post office and community, if there was one, would have been on the south side of Clear Creek.

Latitude = 39:44:54 North Longitude = 105:32:22 West

HUKILL – Continued



Mine structures at the site of Hukill, looking north across Clear Creek towards I-70
 Photograph by William H. Bauer May 18, 2004

Chronology of the Post Office

- | | | |
|-------------|------|---|
| May 2 1879 | --- | NE/4 Sec 34 (?) T3S R73W On the bank of Clear Creek about 500 feet from the RR. on the south side
Proposed postmaster - William Wallace Rose, Jr. |
| May 12 1879 | | Established |
| May 12 1879 | | Rose, William W. Jr. |
| Jul 25 1879 | ---- | SW/4(?) Sec 34 T3S R73W On the south side of Clear Creek
The sketch map shows it between Idaho Springs and Spanish Bar, in the SW/4 of Sec 34. Spanish Bar is at the mouth of Fall River |
| May 10 1880 | | Discontinued |

Confirmed types of postal markings

NO POSTAL MARKINGS HAVE BEEN REPORTED FROM HUKILL

IDAHO

On January 7, 1859 George A Jackson found placer gold at the mouth of Chicago Creek where that stream flows into South Clear Creek. This was the first truly important discovery of placer gold in the Rocky Mountains. Jackson's discovery occurred at about the same time as John H. Gregory's discovery of lode gold ore on another branch of Clear Creek, only a few miles away at Mountain City. Together, these two discoveries turned around the tide of disappointed gold seekers and started the development of what would become the State of Colorado

IDAHO – Continued

The settlement that developed around the Jackson discovery had many early names: Jackson's Diggings, Paynes Bar, Sacramento, Idaho Bar, Idaho City and finally Idaho Springs. There was even another minor version, a spelling of Idaho as Idahoe.



IDAHOE / COL. T. May 14 [Spelling ends in "E"]

There have been numerous claims as to the meaning of the word Idaho. One version says that it means, "Gem of the mountains" or rocks, but another says that, "Ee da how" is Indian for, "the sun is coming down the mountains." Still another expert suggests that the Indian name may be Idahi, which is what the Kiowa called the Comanche. However, Maxine Benson in her book, *1001 Colorado Place Names*, states that: "Idaho is a coined word. It has no origin in any known Indian language, despite the popular belief that it was originally "Ea-da-how" — "Light on the mountain."

Although this new mining community quickly flourished and had a significant population it did not acquire a post office until three years later, in early 1862. Robert L. Brown, in *Colorado Ghost Towns Past, Present* states: "Idaho Springs first postal facility was a simple wooden box divided into little compartments. The most convenient location for the box seems to have been in the living room of Mrs. R. B. Griswold. If you were expecting mail, you simply dropped in to check from time to time." From this it is possible that there was some sort of mail service prior to the establishment of the post office. Or, because of the missing, early Records of Postmaster Appointments for Clear Creek County, the post office might have been established earlier than March 22, 1862.

Idaho had an advantage over many other placer gold camps. The placer discoveries were soon followed by discoveries of lode gold and thus the town continued to grow throughout the nineteenth century.

Idaho was the center of an extensive mining district along South Clear Creek and its tributary streams.

In 1876 the community officially adopted the name of Idaho Springs. This change was recognition that the hot soda springs located there were attracting a growing clientele to relax and enjoy the therapeutic qualities of the hot baths.

Idaho was the designated county seat when Clear Creek County was created by the Territorial Legislature. Idaho held on to that position until 1876 when the county seat was moved to Georgetown.

IDAHO – Continued

Latitude = 39:44:33 North Longitude = 105:00:47 West



IDAHO / COL. T. February 4 [Spelling without the “E”]

Chronology of the Post Office

- Mar 22 1862 Established
- Mar 22 1862 Fields, Samuel J.
- Mar 16 1863 Charaund, Pierre E.
- Jun 30 1864 Medley, Americus
- Jun 29 1865 Seaton, Lee R.
- Jun 28 1867 Patten, George A.
- There is a gap in the Records of Postmaster Appointment
- Apr 7 1876 Name changed to Idaho Springs

Confirmed types of postal markings

- | | | |
|---|--------------------------------|---|
| 1 | IDAHOE / COL.T.
CI 10P 26.0 | Nov 4 1865 Dec 8 1865
Hstp Target, 4-ring 19mm |
| 2 | IDAHO / COL.T.
CI 10P 23.5 | Feb 4 1870
Hstp Pen cancel, copy of record |
| 3 | IDAHO / COL.
CI 10P 24.5 | Dec 9 1869 Apr 14 1870
Hstp Target, 4-ring 18mm |
| 4 | IDAHO / COL.
CI 10P 25.0 | Nov 24 1873 Apr 25 1875
Hstp Target, cork single 16mm ring |
| 5 | IDAHO / COLO.
CI 10P 25.5 | Jan 24 1873 Jun 6 1876
Hstp Target, 4-ring, cork smudge, Fancy,
negative star in circle |



1



2



3



IDAHO – Continued



IDAHO SPRINGS

The modification of the name from the simple Idaho to Idaho Springs was indicative of the growing popularity of the hot springs and the beginning of a gradual shift from an economy based solely on mining to one that encouraged recreational developments.

However, it would not be until well into the twentieth century that mining ceased to dominate the economy of Idaho Springs. The area that comprised Clear Creek and Gilpin Counties was one of the richest in Colorado and Idaho Springs was a primary supply center for a large area. It also provided a suitable location for the establishment of mills and smelters to process ore from the surrounding mines.

Idaho Springs is at an elevation well below that of Central City and Black Hawk. With that advantage, it was an excellent location from which to drive a tunnel north, into and beneath the mines of the Central City area. The tunnel provided drainage to those mines as well as a less expensive way to move ore out of the mines to the mills and smelters in Idaho Springs. This extended the economic life of the Central City mines. Although the tunnel no longer serves its initial purpose, it still serves as a training ground for students of the Colorado School of Mines and by providing mine tours it is one of the tourist attractions of Idaho Springs.

The arrival in 1877 of the Colorado Central Railroad was a major boost to the economy and also provided easy access to the medicinal springs for the population of Denver.

As the twenty-first century approached, mining in the Idaho Springs became a thing of the past. Now the economy is based on tourism. The hot springs still attract visitors and the town serves travelers along Interstate 70. Idaho Springs is the convenient shopping place for a growing number of full-time residents who live in the mountains and work in Denver. And, to some extent, it is a residential community for the workers at the casinos in Central City and Black Hawk.

Chronology of the Post Office

Jan 26 1871	----	SE/4 Sec 36 T3S R73W	
Apr 7 1876		Name changed from Idaho	
		There is a gap in the Records of Postmaster Appointment	
Apr 22 1878		Horn, Wilbur F.	
May 5 1881		Horn, Wilbur F.	P&S
Jul 4 1884		Mixsell, Phillip	P&S
Sep 29 1884		Elliot, Jacob J.	P
Apr 1 1885		Horn, Wilbur F.	P&S
May 14 1889		Sheppard, James F.	P
Dec 21 1889		Sheppard, James F.	P&S
May 2 1894		Woodward, Charles A.	P&S
Mar 24 1898	----	Undivided, Sec 36 T3S R73W	
May 4 1898		Noyes, Stephen A.	&S
May 8 1902		Noyes, Stephen A.	P&S
Apr 6 1906		Trathen, John	P&S
Apr 1 1910		Trathen, John	P&S

IDAHO SPRINGS— Continued

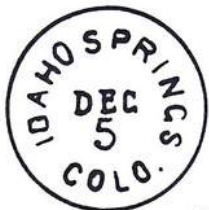
Sep 24 1913	Leach, Frederick H.	Acting
Feb 18 1914	Marihugh, Oscar N.	P&S
Apr 7 1914 ----	SW/4 Sec 36 T3S R73W	
Sep 5 1918	Marihugh, Oscar N.	P&S
Dec 13 1922	Leach, Frederick H.	P&S
Dec 14 1926	Leach, Frederick H.	P&S
Jan 22 1931	Leach, Frederick H.	Confirmed
Jan 31 1931	Leach, Frederick H.	P&S
Jan 31 1935	Regennitter, Erwin L.	Acting
Feb 14 1935	Regennitter, Erwin L.	Assumed charge
Jun 26 1935	Regennitter, Erwin L.	Nominated
Jul 8 1935	Regennitter, Erwin L.	Confirmed
Jul 11 1935	Regennitter, Erwin L.	Appointed Presidential
Aug 10 1935	Regennitter, Erwin L.	Commissioned
Mar 10 1937	Brown, Chester A.	Acting
Apr 1 1937	Brown, Chester A.	Assumed charge
May 17 1937	Brown, Chester A.	Nominated
Jul 6 1937	Brown, Chester A.	Confirmed
Jul 12 1937	Brown, Chester A.	Appointed Presidential
Aug 13 1937	Brown, Chester A.	Commissioned
Aug 16 1937	Brown, Chester A.	Assumed charge
Oct 19 1941 ----	Sec 36 T3S R73W SE corner of block west of 15th Avenue & South of US-40	
Oct 29 1941	Brown, Chester A.	Nominated
Nov 6 1941	Brown, Chester A.	Confirmed
Nov 7 1941	Brown, Chester A.	Appointed Presidential
Nov 28 1941	Brown, Chester A.	Commissioned
Nov 30 1941	Brown, Chester A.	Assumed charge
Oct 7 1966	Edwards, Bruce N.	Acting
Dec 27 1969	Dearmin, Paul Francis	Acting
May 8 1967	Dearmin, Paul Francis	Appointed & Confirmed
May 19 1967	Dearmin, Paul Francis	Commissioned & Assumed charge
Jan 24 1969	Mays, Janice E.	Acting
Sep 26 1969	Mester, James C.	Acting
Aug 14 1971	Johns, Robert L	Appointed
Aug 14 1971	Johns, Robert L	Assumed charge
Nov 8 1974	Wainwright, Robert	Officer in charge
Mar 1 1975	Darnell, Nancy M.	Appointed

Confirmed types of postal markings

1	IDAHO SPRINGS / COLO. CI 10P 26.0	Aug 4 1875 Apr 20 1880 [SRM: dates before official name change of town] Hstp Cork, smudge, negative x-roads, circle of wedges, grid with center bar, bar and semi-circle
2	IDAHO SPRINGS / COLO. CI 10P 26.0	Aug 20 1882 Mar 19 1889 Dplx Grid, oval with circle, without number
3	IDAHO SPRINGS / COLO. CI 10P 27.0	Jul 2 1890 Dec 6 1890 Hstp Cork, smudge
4	IDAHO SPRINGS / COLO. CI 10P 28.5	Mar 8 1894 Nov 19 1896 Hstp Cork, smudge
5	IDAHO SPRINGS / COLO. CI 10P 28.0	Apr 4 1897 Aug 11 1898 Hstp Cork, smudge, 3 large bars
6	IDAHO SPRINGS, COLO. / REC'D. CI 10P 28.0	Feb 21 1898 Hstp No killer, backstamp [NOT AVAILABLE FOR ILLUSTRATION]
7	IDAHO SPRINGS / COLO. CI 10P 28.0	Oct 13 1898 Sep 30 1902 Dplx Grid, 9 bar oval

IDAHO SPRINGS – Continued

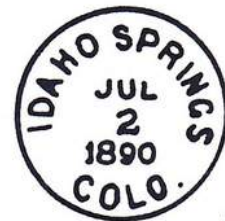
- | | | |
|------|---|--|
| 8 | IDAHO / SPRINGS / COLO.
OV 10P 33.0x21.0 | --- -- 190-
Hstp No killer, lines between town/town/state
Oct 3 1907 May 14, 1910 |
| 9 | IDAHO SPRINGS / COLO.
CI 10P 25.0 | Dplx Grid, oval with 1 and circle
Aug 26 1914 Nov 22 1950 |
| 10 | IDAHO SPRINGS / COLO.
CI 10P 25.0 | Dplx Grid, oval with 1 and circle
Jun 6 1906 Dec 30 1918 |
| 11 | IDAHO SPRINGS, COLO. / REGISTERED
CI 11P 30.0/19.0 | Hstp No killer, used with Idaho Springs straight
line same date (Type 11.1)
Aug 14 1901 Jun 6 1906 |
| 11.1 | Idaho Springs Colo.
SL 00R 47.0/7.0 | Hstp No killer, used with Idaho Springs
double ring, same date (Type 11)
Dec 30 1918 |
| 12 | Idaho Springs Colo.
SL 00R 64.0x7.0 | Hstp No killer, used with Idaho Springs
double ring, same date (Type 11)
Aug 2 1935 Apr 26 1963 |
| 13 | IDAHO SPRINGS / COLO.
CI 10P 20.5 | Mach 6 wavy lines
1940s |
| 13.1 | Idaho Springs / Colo.
RC 10P ?? x ?? | Hstp No killer, Parcel Post Box, partial strike
[NOT AVAILABLE FOR ILLUSTRATION]
Mar 16 1959 Jul 14 1959 |
| 14 | IDAHO SPRINGS / COLO.
CI 10P 20.5 | Mach Slogan in box with bars: COLORADO /
RUSH TO THE ROCKIES / 1859 CENTENNIAL 1959
Jul 21 1962 |
| 14.0 | IDAHO SPRINGS, COLO.
CI 11P 31.0/23.0 | Rolr 6 wavy lines
Oct 8 1957 Aug 23 1965 |
| 14.1 | IDAHO SPRINGS / COLO.
CI 10P 21.0 | Mach Slogan in box with tree stump: Remember
- Only you can / PREVENT / FOREST FIRES
Mar 2 1964 Feb 17 1965 |
| 14.2 | IDAHO SPRINGS / COLO.
CI 10P 33.0 | 4bars S-25x20mm
Oct 12 1966 |
| 14.3 | IDAHO SPRINGS, CO / 80452
CI 10P 20.0 | Mach Slogan in box with tree stump: Remember
- Only you can / PREVENT / FOREST FIRES
May 18 1966 Mar 16 1977 |
| 15 | IDAHO SPRINGS, CO / 80452
CI 10P 20.5 | Mach 6 wavy lines
Sep 14 1967 Oct 10 1969 |
| 16 | IDAHO SPRINGS, CO / 80452
CI 10P 32.0 | 4bars S-24x18mm
Apr 26 1971 Jun 3 1991 |
| 16.1 | IDAHO SPRINGS, CO / 80452
CI 10P 32.5 | 4bars S-24x18mm; taller, thinner letters
Apr 15 1992 Jun 3 1993 |
| 17 | IDAHO SPRINGS, CO 80452 / USPS
CI 10P 29.0/20.0 | Hstp No killer |



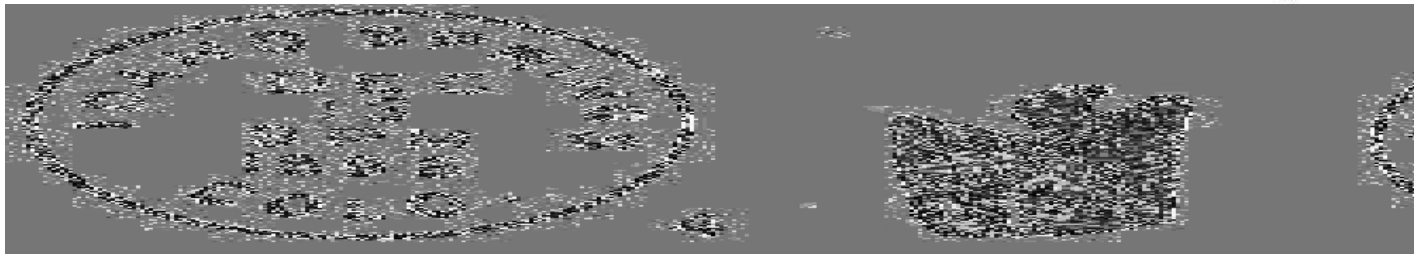
1



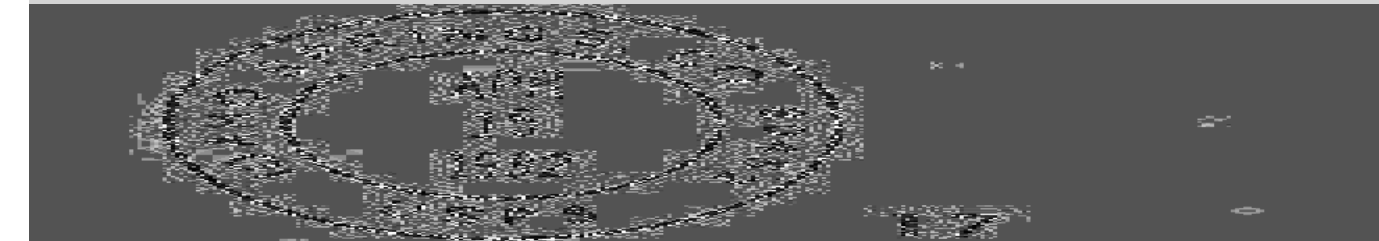
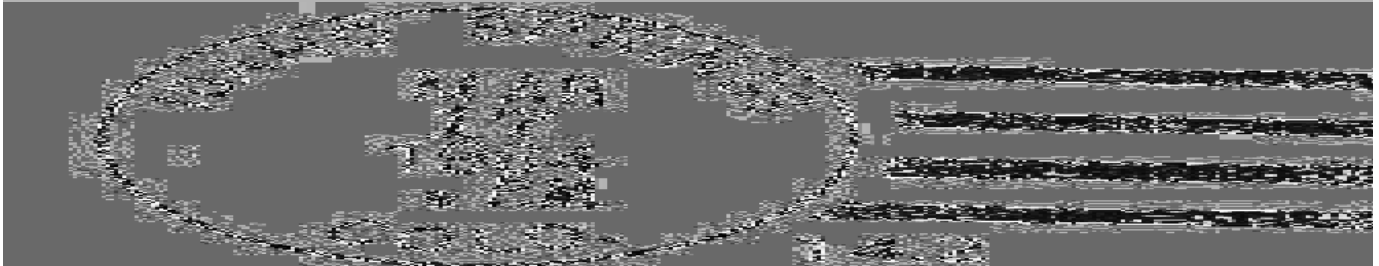
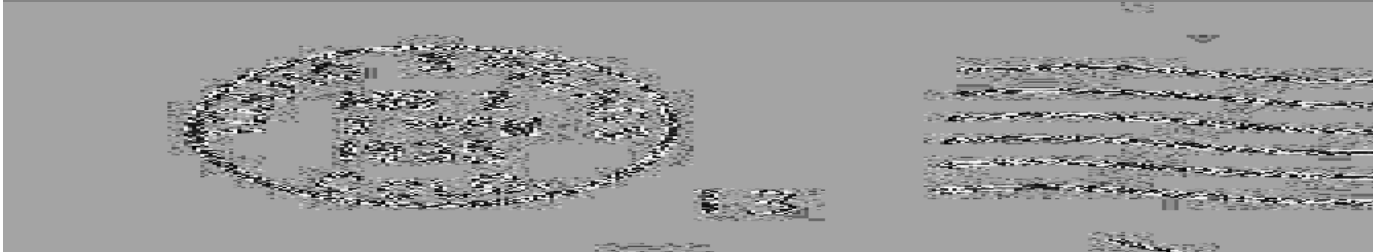
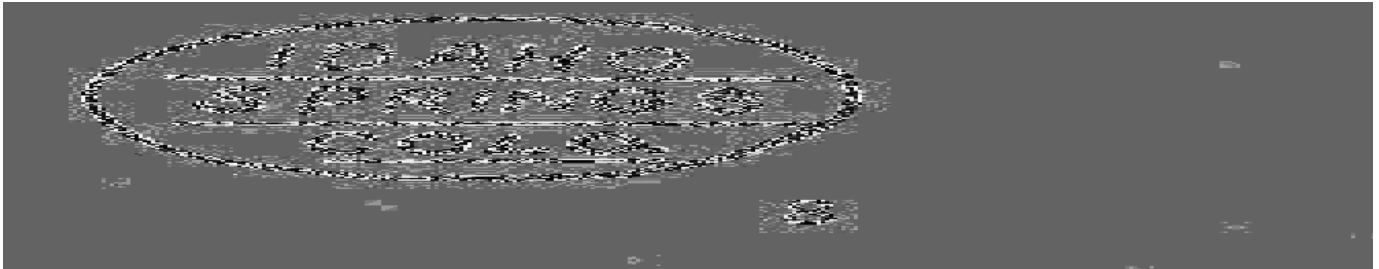
2



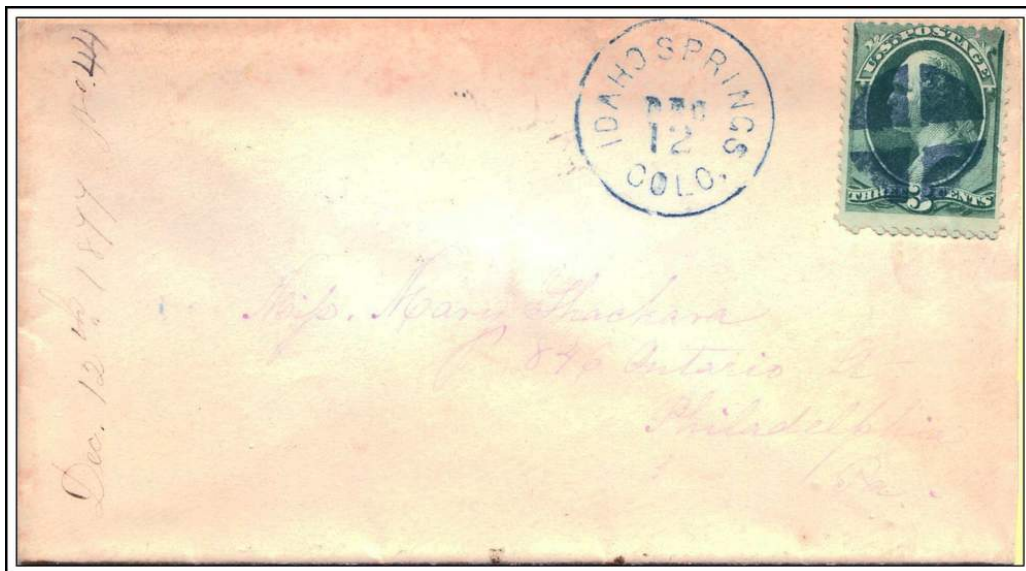
3



IDAHO SPRINGS – Continued



IDAHO SPRINGS – Continued



IDAHO SPRINGS / COLO. December 12, (1877)

IDAHO SPRINGS STATIONS

150TH GOLD RUSH ANNIVERSARY STATION

Chronology of the Post Office

Jan 7 2009 Operated as a Special Commemorative Station

Confirmed types of postal markings

1 Idaho Springs, CO 80452 // 150th Gold Rush / Anniversary Station Jan 7 2009
IR 00R 76.0x44.0 Pict Scene - Miner panning for gold; Text - 1859 - 2009



150th Gold Rush
Anniversary Station
1859 - 2009

January 7, 2009
Idaho Springs, CO 80452

PONY EXPRESS STATION

Chronology of the Post Office

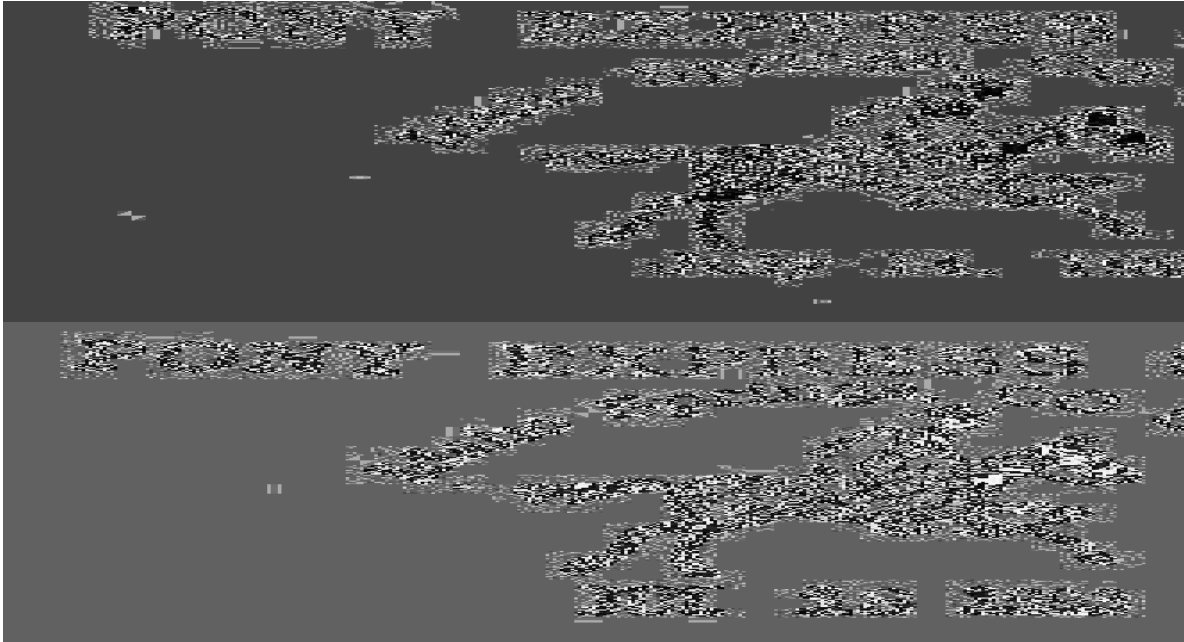
Jul 14 1991 Operated as a Special Commemorative Station
Jul 19 1992 Operated as a Special Commemorative Station
Jul 18 1993 Operated as a Special Commemorative Station

IDAHO SPRINGS STATIONS – Continued

PONY EXPRESS STATION – Continued

Confirmed types of postal markings

- | | | | |
|---|---|---|-------------|
| 1 | Idaho Springs, CO 80452 // PONY EXPRESS STATION
IR 00R 70.0x34.0 | Pict Scene - Pony express rider | Jul 14 1991 |
| 2 | Idaho Springs, CO 80452 // PONY EXPRESS STATION
IR 00R 62.0x30.0 | Pict Scene - Express rider silhouette between
T-S-Z line and m-d-y | Jul 19 1992 |
| 3 | Idaho Springs, CO 80452 // PONY EXPRESS STATION
IR 00R 72.0x35.0 | Pict Scene - Express rider between T-S-Z and m-d-y | Jul 18 1993 |



LAMARTINE

The following history of Lamartine is taken from *The Silver State Record*, Volume 2, Number 1, May 1964, page 4.

LAMARTINE in Clear Creek County grew up around the Lamartine Mine, which was discovered in 1869 by four partners, prospecting in the Ute creek area. The four, Bougher, Cooper, Medill, and Chavanne, found gold float and further on, a vein of gold-bearing ore. They immediately staked out a claim and started to work their find, but with little success. Bougher died, leaving his share in the mine to his wife who sold it to her brother-in-law Peter Himrod, for \$250. Eventually he bought Cooper's share for \$25 and Chavanne's for \$5. All attempts to locate Medill proved fruitless, so he was declared to be legally out of the partnership.

Although Himrod patented the claim, he did not visit it again until 1887, when he found a Mr. Comer working it, unaware that he was trespassing on patented property. The two men then made a contract that Comer should continue to work the mine. Himrod was unable to return for several years and when he did, it was to die. The mine passed to Himrod's son who poured a considerable sum of money into the property before he became discouraged and sold the claim, although very good silver had been found, and the mine held out great promise.

The new owners sunk a shaft and struck mineral rich enough to pay a profit of \$5,000 on their small investment within a few short months.

LAMARTINE – Continued

The community of Lamartine began in 1887 and acquired a post office in 1889. It is not clear when the post office was discontinued. A Geographic Site Location Report was filed in 1903 and Lamartine is listed in the Postal Guides through 1909, but not in the 1910 Guide. Thus it seems likely that Lamartine was discontinued sometime between July 1909 and June 1910.

To reach the site of Lamartine, follow the directions to the site of Freeland. From Freeland, continue on up Trail Creek. The road becomes steeper and rougher beyond Freeland, but is passable without much difficulty. The road crosses to the right (north) side of the creek for about a mile then crosses back to the left (south) side and turns sharply to the southeast, quickly coming into a complex of tailings piles and abandoned mine buildings. This was the location of Lamartine.

There are descriptions that place Lamartine at a location further from Trail Creek and indicate that there were two Lamartine Mines. The location I describe above coincides with a notation, “Lamartine Tunnel” on the USGS map of Clear Creek County.

Latitude = 39:43:46 North Longitude = 105:36:18 West

Chronology of the Post Office

- Oct 9 1889** ---- **SE/4 Sec 1 T4S R74W Freeland, two miles northeasterly**
- Nov 27 1889** **Established**
- Nov 27 1889** **Sapp, Charles N.**
- Jan 15 1890** ---- **SE/4 Sec 4 T4S R73W 2-1/2 miles south of Clear Creek,
1 mile north of Chicago Creek; Freeland 2 miles northeasterly.
However, the sketch map shows it in the SE/4 Section 1, Township 4**
- Oct 7 1890** **Marshall, George G**
- Sep 8 1903** ---- **SE/4 Sec 1 T4S R74W On north side Ute Creek, 5-1/2 miles south of Clear Creek**
- **Discontinued No date given for discontinuance. Last postmaster appointment Oct 7, 1890.
Not listed in the 1910 or later Postal Guides.**

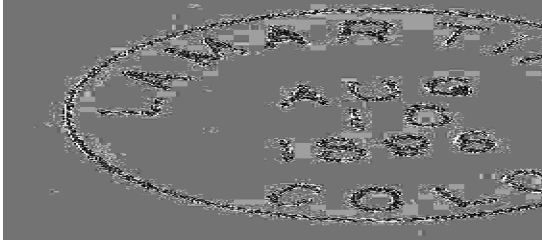


LAMARTINE / COLO. September 11, 1896

LAMARTINE – Continued**Confirmed types of postal markings**1 LAMARTINE / COLO.
CI 10P 28.0

Aug 10 1896 Jan 16 1908

Hstp Target, 4-ring 17mm

**LAWSON**

This small community began life in the early 1870's as a stage stop on the road from Idaho Springs to Georgetown. Alexander Lawson built an inn that became known as the Six-Mile House because it was six miles from Georgetown.

In 1876 gold ore was discovered on Red Elephant Mountain and Lawson began to develop as a town providing residences and supplies to the miners. There is no question that the town was named for Alexander Lawson.

There is a claim that Alexander Lawson came to this place and built his inn, having just eloped with the daughter of the proprietor of the roadhouse at Downieville. John Aldrich in *Ghosts of Clear Creek County* relates a perhaps fanciful story relative to the naming of Lawson: "The town was originally called Free America by jingoistic immigrant John Coburn who came to Colorado from Ireland in 1870 and built a home in the area. In 1876, Coburn who operated a toll road near his house, renamed the town Lawson for his son-in-law." Is there a connection between these two stories? Downieville was a small community, less than a mile west of Mill City / Dumont and that name is still on the USGS map of Clear Creek County.

Lawson survived as long as the mines were productive. When mining ceased the activity at Lawson declined. The community still exists as a small group of homes on the south side of Interstate 70. Access is by the frontage road from Interstate 70 Exit 235 at Dumont, two miles to the east. In 1991 the building that was the final home of the Lawson Post Office was still standing,

Latitude = 39:45:57 North Longitude = 107:52:53 West

Chronology of the Post Office

Jun 16 1887	---	NE/4 Sec 26 T3S R74W
		Document signed by Alexander Lawson
Jun 29 1877		Established
Jun 29 1877		Lawson, Alexander
Apr 23 1880		Morrison, Charles M.
Aug 7 1883		Westholm, Peter G.
Nov 25 1885		Partridge, Edwin M.
Oct 19 1896		August, Anthony J.
May 23 1898		Adams, Samuel A.
Oct 15 1901		Hazen, Norman F.
Apr 21 1902		Everett, William H.
Dec 31 1903		Hazen, Norma F.
Aug 23 1904		Donnelly, Dennis J.
May 17 1912		Frenberth, Amy A.
Mar 7 1914	---	SE & SW/4s Secs 23 & 24 T3S R74W 150 feet north of Clear Creek
Mar 21 1922		Anderson, Walter E. Confirmed

LAWSON – Continued

Apr 6 1922	Anderson, Walter E.	Commissioned
Apr 12 1922	Anderson, Walter E.	Assumed charge
Dec 31 1934	Boham, Irvin A.	Assumed charge
Jan 21 1935	Boham, Irvin A.	Acting
Jan 31 1935	Boham, Irvin A.	Confirmed
May 29 1935	Boham, Irvin A.	Commissioned
Jan 31 1939	Carlson, Ida	Acting
Feb 12 1939	Carlson, Ida	Assumed charge
Feb 16 1939	Carlson, Ida	Acting
Feb 11 1939	Carlson, Ida	Possession
Mar 24 1939	Carlson, Ida	Confirmed
Apr 14 1939	Carlson, Ida	Commissioned
Apr 21 1939	Carlson, Ida	Possession
Jul 15 1939	---- NE/4 Sec 24 T3S R74W A move 1500 feet east of a previous location 300 feet north of Clear Creek	
Oct 25 1941	---- NE OF NE/4 & NW of NW/4 Sec 25 & 26 T3S R74W Clear Creek 300 feet south of Post Office	
Aug 27 1947	Crabtree, Ida Mae	Name change by marriage
Jul 31 1966	Morgan, Josephine	Acting
Jul 31 1966	Morgan, Josephine	Possession
Aug 31 1966	Discontinued Mail to Idaho Springs	



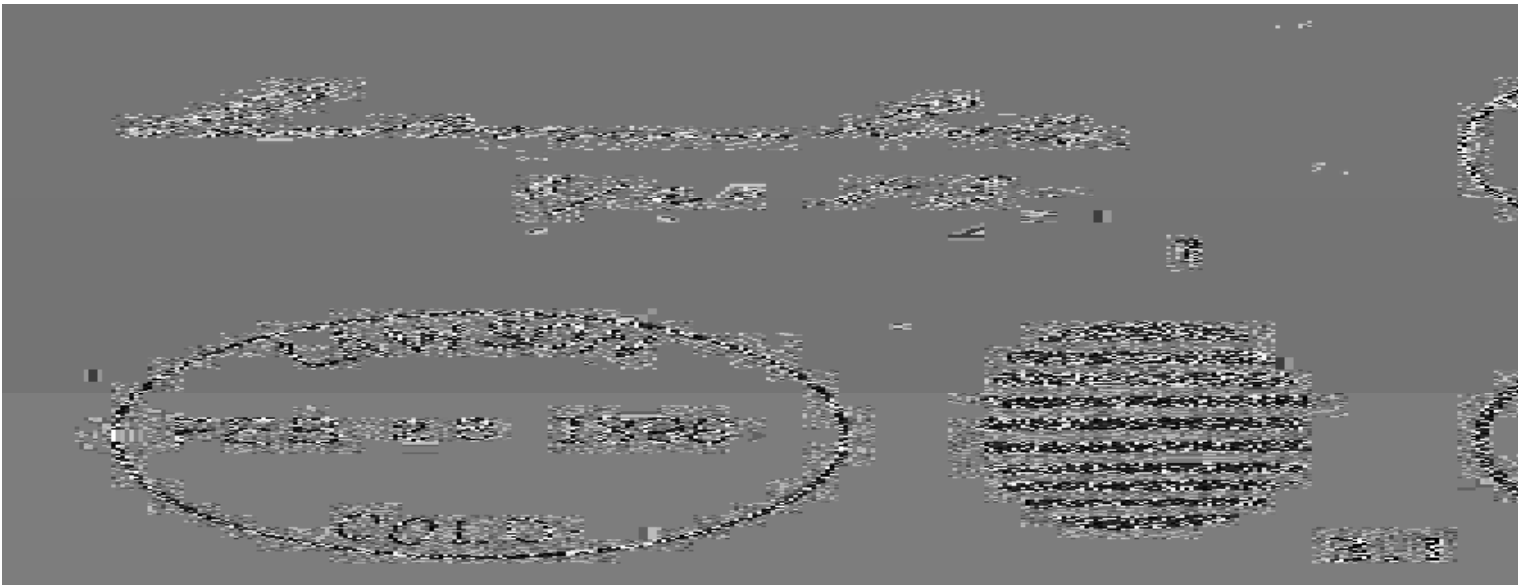
**Lawson, Colorado. This building was home to the post office at the time of discontinuance in 1966.
Photograph by William H. Bauer May 10, 1998**

Confirmed types of postal markings

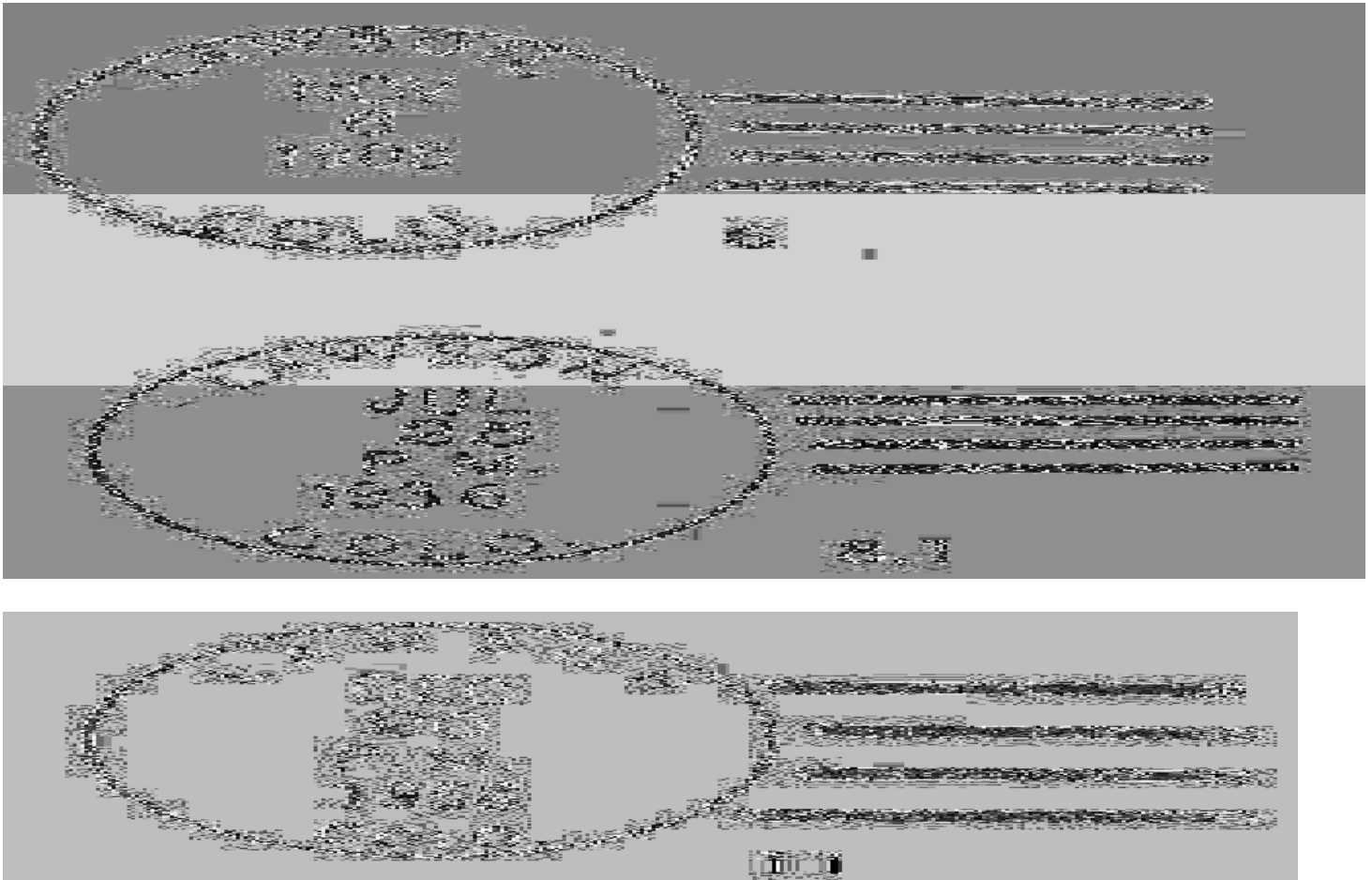
1	Lawson Colo.	Feb 1 1878 May 20 1883
	MS	Mscp Pen cancel
1.1	LAWSON, / COLO.	J-- 30 1879 Aug 5 1879
	CI 10P 25.0	Hstp Positive 5 point star

LAWSON – Continued

2	LAWSON, / COLO. CI 10P 31.0	Apr 26 1888 Hstp Target, 4-ring 20mm
3	LAWSON / COLO. CI 20P 27.0/24.0	Jun 28 1886 Dec 7 1888 Hstp Grid, 7 bar circular. small Maltese cross at each side of CDS
3.1	LAWSON / COLO. CI 10P 32.0	Feb 23 1896 Hstp Grid, 11 bar oval
4	LAWSON / COLO. CI 10P 28.0	Mar 9 1899 May 20 1899 Hstp Cork smudge
4.v	LAWSON / COLO. CI 10P 28.0	--- 23, [1898] Hstp Quartered cork year blacked out
5	LAWSON / COLO. CI 10P 28.5	Mar 15 1902 Jun 25 1907 Dplx Grid, 9 bar oval
6	LAWSON, / COLO. CI 10P 31.0	Apr 16 1908 Jul 26 1935 4bars S-24x13mm
7	LAWSON / COLO. CI 10P 32.0	Dec 25 1914 Jun 5 1920 4bars S-??x20mm
8	LAWSON, / COLO. CI 10H 31.0	Jul 28 1934 4bars P-??x19mm
8.1	LAWSON, / COLO. CI 10P 32.0	Jul 25 1936 Jan 4 1938 4bars S-25x13mm
9	LAWSON / COLO. CI 10P 33.0	Mar 1 1939 Sep 11 1948 4bars S-23x18mm
10	LAWSON / COLO. CI 11P 28.0/18.0	Sep 11 1948 Oct 19 1953 Hstp No killer
11	LAWSON / COLO. CI 10P 32.0	Dec 20 1958 Jan 11 1962 4bars S-23x19mm
12	LAWSON / COLO. CI 10P 32.5	Jun 25 1960 May 13 1965 4bars S-24x20mm
13	LAWSON, CO / 80460 CI 10P 33.0	Jun 22 1965 Aug 31 1966 4bars S-24x20mm



LAWSON – Continued



LOMBARD

Lombard is another of the Colorado post office sites that has escaped mention in the historical literature. All that is known about it comes from the Post Office Department records.

From the location description given in the Geographic Site Location Reports the site of Lombard was at the head of Cumberland Gulch and less than a mile southeast of the site of Yankee.

From Yankee Hill you can look across the head of Cumberland Gulch and observe several mine dumps on the east side of the gulch. It seems likely that the Lombard Post Office was at one of these mines.

The opening of the Lombard office, four years after the closure of the post office at Yankee, likely represents a revival of mining in the vicinity of Yankee Hill.

To reach, or at least view the site of Lombard, follow the directions to Yankee. When you reach the site of Yankee, continue southeast over a low ridge and that will bring you in view of Lombard. In 1998 this road was little more than two ruts. I did not attempt to drive around the head of Cumberland Gulch to the mine dumps, but it would be possible to hike the half-mile or so more. The visit to Lombard absolutely requires a four-wheel drive vehicle with good clearance.

LOMBARD – Continued**Chronology of the Post Office**

Jun 2 1914	----	SW/4 Sec 1 (if subdivided) T3S R74W About 1-1/2 miles right side, going up (north) of Fall River, within 500 feet of Cumberland Creek and Gulch, north side Applicant for postmaster - Mrs. Josephine O'Shea (??)
Dec 30 1914		Established
Dec 30 1940		O'Shea, Josephine
Jul 15 1919		Discontinued Mail to Alice

Confirmed types of postal markings

NO POSTAL MARKINGS HAVE BEEN REPORTED FROM LOMBARD

MARSHALLPARK

Marshallpark is one of the post office places for which I have found no information in the published literature of Colorado history.

The description given in the Post Office Department Geographic Site Location Report is sufficient to establish its location within the modern complex interchange of Interstate 70 where US Highway 40 separates from the Interstate and continues west to Empire and Berthoud Pass.

The references to the Colorado & Southern Railroad and the Empire Station solidify this location. Surprisingly there is a modern residence within the interchange, but no older structures remain.

Apparently the supposed need for this post office was not enough to sustain it for more than two years. Marshallpark closed and Empire once again provided mail service to the area where the West Fork and the South Fork of Clear Creek join.

Chronology of the Post Office

Dec 9 1901	----	Center of Sec 27 TS3 R74W 300 feet north side of Clear Creek. The Colorado & Southern has depot at proposed location. On the northwest side, 85 feet, Empire Station, will be Marshall Park Station. Proposed postmaster - David F. Speer
Jul 25 1902		Established
Jul 25 1902		Spear, David F.
Oct 24 1903		Ordered closed
Nov 14 1903		Discontinued Papers to Empire

Confirmed types of postal markings

NO POSTAL MARKINGS HAVE BEEN REPORTED FROM MARSHALL PARK

MILL CITY

Mill City was one of the early post offices in Clear Creek County, being authorized only a few months after the creation of Colorado Territory.

Mill City began life as a placer mining camp along Clear Creek, at the mouth of Mill Creek. With a shift in mining activity from placer to lode mining, Mill City became the location for several ore processing mills.

By May 1879 Mill City could no longer support a post office. A year later, Colonel John M. Dumont undertook to revive mining around Mill City. The community experienced some new growth, but when a post office was opened in May 1880 it was with the name Dumont, for Colonel Dumont.

Mill City / Dumont is still alive. It has a number of small homes, some roadside businesses and the Dumont Post Office. It is at Exit 235 from Interstate 70.

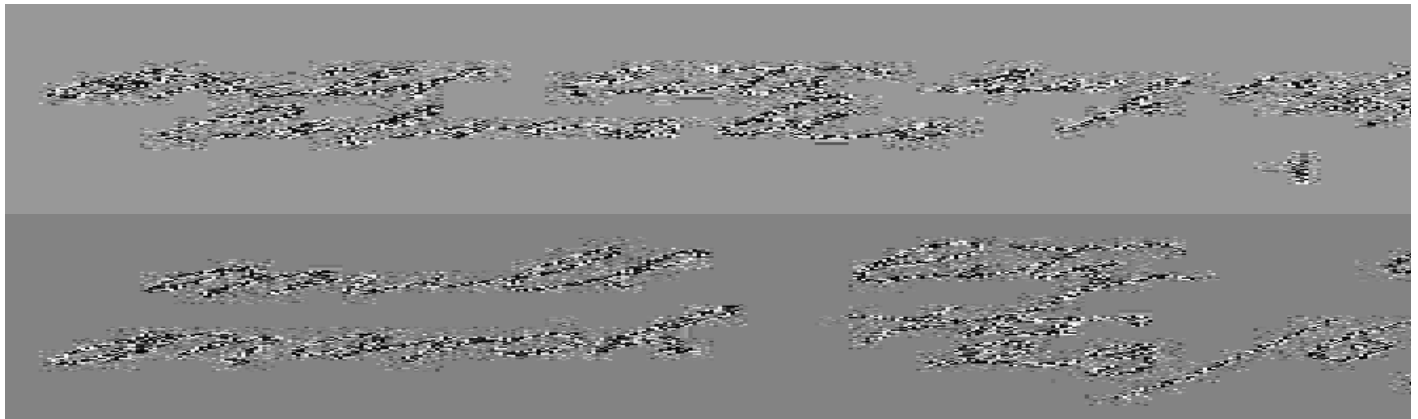
MILL CITY – Continued

Chronology of the Post Office

Jul 5 1861	Established
Jul 5 1861	McIntyre, Douglas
Feb 10 1863	Discontinued
Mar 12 1866	Re-established
Mar 12 1866	Stanley, William S.
Nov 22 1866	Hawkins, William R.
	There is a gap in the Records of Postmaster Appointment
Dec 15 1869	DuBois, Justus E.
Jan 26 1871	--- NE/4 Sec 30 T3S R73W 300 feet north of South Clear Creek, 800 feet east of Mill Creek.
May 26 1879	Discontinued Mail to Lawson

Confirmed types of postal markings

1	Mill City / Colorado MS	Mscp Pen cancel	Sep 19 1866 Sep 29 1869
1.A	Mill City / Col Ty MS	Mscp Pen cancel	Apr 2 1867
1.B	Mill City / Col MS	Mscp Pen cancel	Mar 23 1867 Jul 6 1867
2	MILL CITY / COL.TY. CI 10P 26.0	Hstp Target, 4-ring 18mm	Jan 12 1869 Jun 21 1870



RED ELEPHANT

In 1876 D. C. Dulaney discovered silver ore on Red Elephant Hill above the town of Lawson. The mine and the mining district took their names from the hill. Once in production the mine is said to have supported a crew of twelve. A small community developed around the mine and included the post office, a store and several boarding houses and miners' homes.

The Red Elephant Post Office was discontinued in April 1881. It was revived in June, lasting until November 1881 but with the shorter name of Elephant.

The site is difficult to reach. The USGS topographic map indicates that from Lawson, a steep, poorly maintained road does go in the direction of the Red Elephant location. Jim Ozment and I looked at the road and I was unwilling to attempt driving it. It should be possible to hike in to the site. However, ghost town historian John K. Aldrich has reported that the site is difficult to locate as there are ruins scattered throughout the gulch.

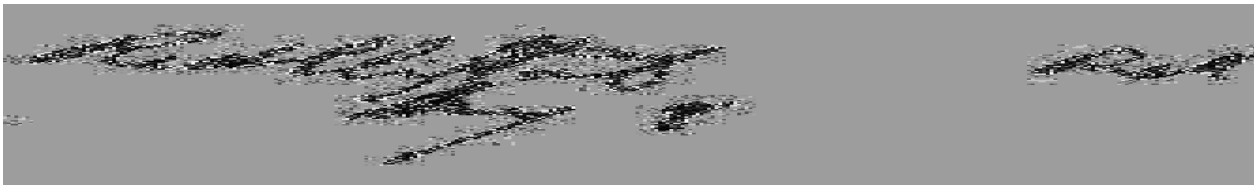
RED ELEPHANT – Continued

Chronology of the Post Office

Dec 11 1878	----	Not surveyed 1-1/2 miles north of Clear Creek. The sketch map places it in the NW/4 SE/4 Sec 23, T3S R74W, and Lawson in the NE/4 Sec 26
		Proposed postmaster - Henry Thompson
Dec 19 1878		Established
Dec 19 1878		Thompson, Henry
Jul 6 1880		Wolfe, Charles K.
Apr 22 1881		Discontinued

Confirmed types of postal markings

1	Red Elephant MS	Mscp Pen cancel	May 8 1879 Apr 27 1880
1.A	Red Elephant Colo MS	Mscp Pen cancel	Jun 25 1880



SILVER PLUME / SILVERPLUME

A silver-lead discovery by Owen Feenan in 1868 began the mining activity at Silver Plume. Colonel Charles Baldwin and Jane Huff erected the first buildings in the town. The Colorado Central Railroad reached Silver Plume in 1877 and the town was incorporated September 24, 1880. The area mines were rich in silver, gold, lead, zinc and copper. A high-quality granite was also quarried nearby.

The mines were concentrated on Republican Mountain and Brown Mountain, north of the town. The best producers were the Pelican-Dives, Pat Rock, Seven-thirty and the Terrible.

The derivation of the name Silver Plume is wrapped in controversy. There are almost as many explanations for the name as there are authors who wrote about Silver Plume.

The most commonly accepted version for the name is that it was that of a mine, the Silver Plume. In turn, the mine was named for the plume-like deposits of native silver found in the mine. Another version purports that it honors a national political figure, James G. Blaine, a supporter of the free coinage of silver, who was known as the Plumed Knight. A third explanation is that Commodore Stephen Decatur suggested the name, for an unstated reason. Other explanations usually cite some fanciful resemblance to a plume, from snow banks on the mountains to spray from a nearby waterfall.

Silver Plume is located on the north side of Interstate 70 about two miles west of Georgetown and some 600 feet higher in elevation. The town, like Georgetown, still has a good number of historical buildings. It is also the western terminus of the Georgetown Loop tourist railroad.

The topography of the upper portions of Clear Creek is a classic example of the activity of valley glaciers. The main valley, in which Silver Plume is situated and the valley of South Clear Creek are typical U-shaped glacial valleys. The two merge at Georgetown. The combined power of the two glaciers resulted in a deeper excavation of the valley from that point downstream. However, the valleys of the two contributing glaciers did not cut as deeply and produced hanging valleys with steep ascents required to reach their floors.

In 1896 the Post Office Department arbitrarily changed the spelling from two words to one word. By late 1909 the spelling reverted back to the original.

Latitude = 39:41:46 North Longitude = 105:43:31 West

SILVER PLUME / SILVERPLUME – Continued



Post Office – Silver Plume, Colorado
 Photograph by William H. Bauer May 10, 1998

Chronology of the Post Office

Dec 1 1875	Moved from Brownsville	
	The early records of postmaster appointments are missing	
Dec 1 1875	Ganky, John B.	
Jul 15 1876	---- SW/4 Sec 18 T4S R74W	On north side of Clear Creek
Jan 30 1882	Watts, Thomas J.	P&S
Dec 31 1883	Watts, Thomas J.	P&S
Sep 25 1885	Egan, John C.	
May 11 1889	Johns, John B.	
Mar 21 1894	Connelly, John E.	
Jan 1896	Spelling changed to Silverplume, but the day of the change is not recorded. The spelling later reverted to the original around 1909.	
Mar 29 1898	---- NE/4 Sec 13 T4S R74W	300 feet north of Clear Creek
Dec 15 1898	Payne, Louisa	
Jan 4 1904	Downes, Selena	
Mar 6 1914	---- SW/4 SW/4 Sec 18 T4S R74W	200 feet north of Clear Creek
Dec 22 1914	Jennings, Anna	Confirmed
Jan 4 1915	Jennings, Anna	Commissioned
Jan 11 1915	Jennings, Anna	Assumed charge
Oct 21 1941	---- SE/4 Sec 18 T4S R74W	Clear Creek is 400 feet south of Post Office
Jul 1 1944	Jennings, Miss Edna A.	Assumed charge
Jul 8 1944	Jennings, Miss Edna A.	Acting
Jan 25 1945	Jennings, Miss Edna A.	Confirmed
Feb 17 1945	Jennings, Miss Edna A.	Commissioned
Feb 11 1953	Mullen, Charlotte C.	Acting, possession

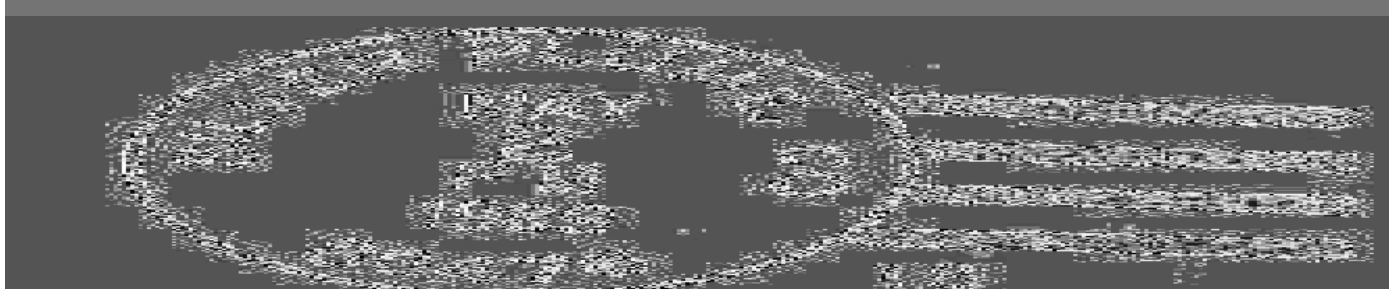
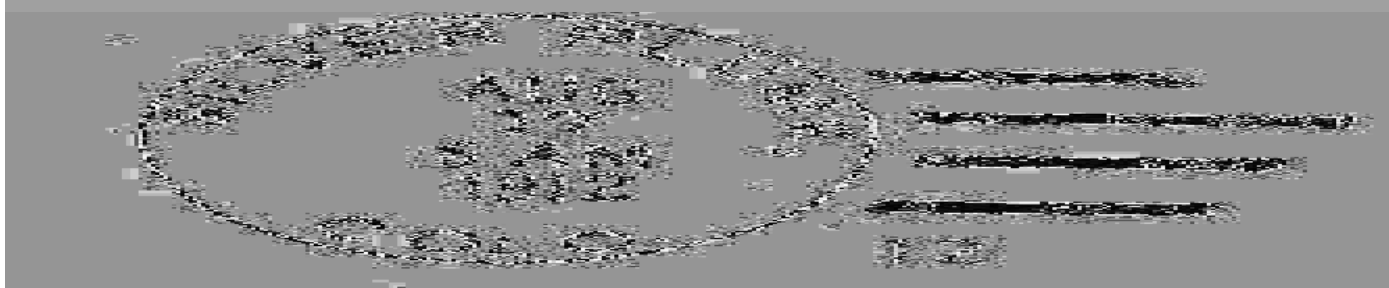
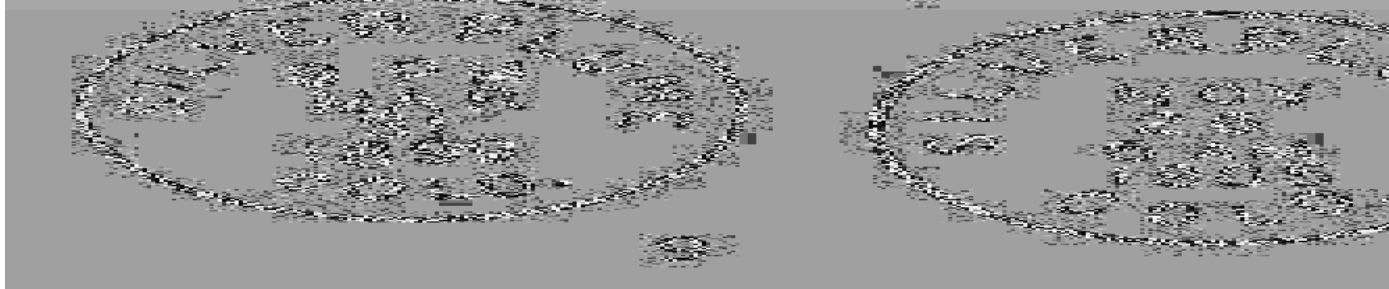
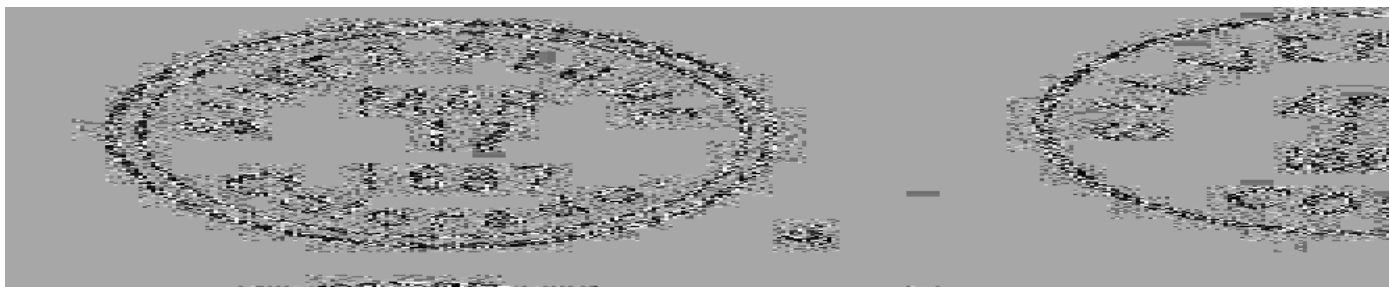
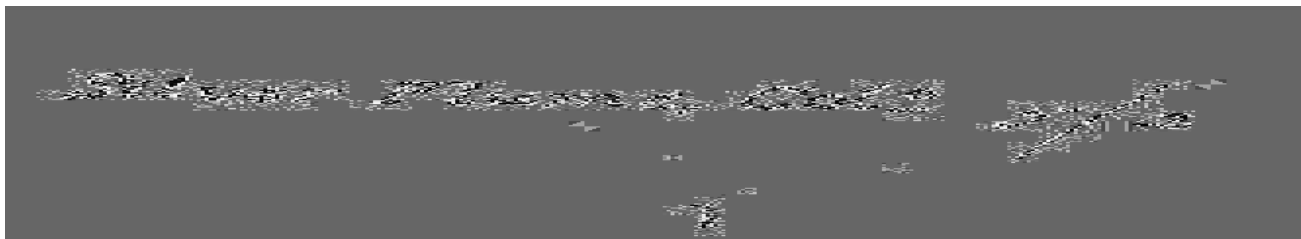
SILVER PLUME / SILVERPLUME – Continued

Mar 11 1953	Mullen, Charlotte C.	Acting
Oct 8 1953	Mullen, Charlotte C.	Appointed
Nov 10 1953	Mullen, Charlotte C.	Commissioned
Dec 31 1953	Mullen, Charlotte C.	Possession
Jun 27 1972	Sanders, Julia C.	Officer in charge (non-postal)
Jun 27 1972	Murray, Golodene R.	Officer in charge
Aug 5 1972	Haskins, Alyce G.	Commissioned
Dec 15 1979	Blackmer, Valerie	Officer in charge
Aug 9 1980	Blackmer, Valerie	Appointed

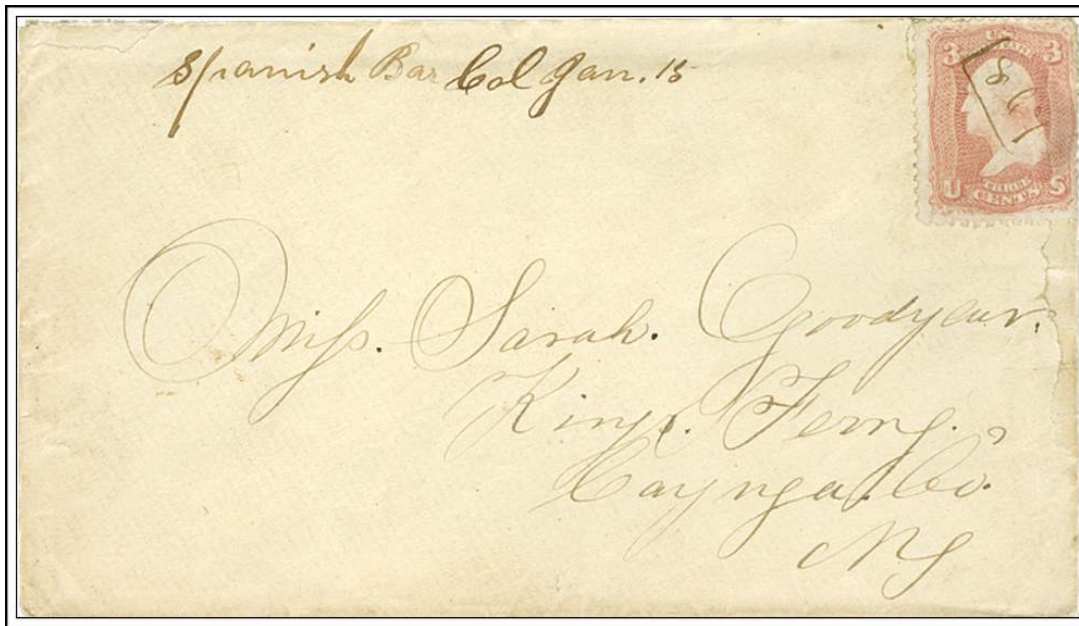
Confirmed types of postal markings

1	Silver Plume Colo SL 00R 37.0x4.0	May 3 1876 Mar 28 1877 Hstp Pen cancel, manuscript date, may or may not have a final small "o" in Col(o) above the underline
2	SILVER PLUME / COLO. CI 10P 25.5	Jan 15 187- May 16 187- Hstp Target, 4-ring 17mm
3	SILVER PLUME / COLO. CI 10P 26.0	Feb 20 1881 Dec 18 1883 Hstp Cork, smudge
3.1	SILVER PLUME / COLO. CI 10P 27.0	Feb 16 1884 Hstp No killer (backstamp)
4	SILVER PLUME / Colorado. CI 20P 28.0/25.0	May 28 1886 Jun 18 1887 Hstp Target, 4-ring 19mm
5	SILVER PLUME / COLO. CI 10P 28.0	Apr 10 1888 Hstp Cork, smudge
6	SILVER PLUME / COLO. CI 10P 27.0	Nov 3 1890 Nov 3 1890 Hstp Not recorded
7	SILVER PLUME / COLO. CI 10P 27.0	Feb 10 1891 Jan 31 1896 Hstp Cork, smudge
8	SILVER PLUME / COLO. CI 10P 28.0	May 17 1898 Hstp Cork, negative X-roads
9	SILVERPLUME / COLO. CI 10P 29.0	Mar 31 1899 Hstp Cork, smudge
10	SILVERPLUME / COLO. CI 10P 30.0	Nov -- 1904 Aug 17 1909 Dplx Grid, 9 bar oval
10.1	SILVERPLUME, COLO. / REC'D. CI 10P 27.0	Jul 17 1906 Hstp No killer (backstamp)
11	SILVER PLUME / COLO. CI 10P 31.0	Aug 30 1909 Sep 5 1911 4bars S-23x13mm
12	SILVER PLUME, / COLO. CI 10P 32.0	Jul 16 1912 Dec 21 1915 4bars S-23x19mm
13	SILVER PLUME / COLO. CI 10P 30.0	Feb 27 1935 Aug 16 1937 Dplx Grid, 9 bar oval
14	SILVER PLUME. / COLO. CI 10P 33.0	Nov 8 1939 Dec 12 1940 4bars S-24x20mm
15	SILVER PLUME / COLO. CI 10P 32.0	Dec 11 1941 Jan 2 1962 4bars S-24x19mm
16	SILVER PLUME, CO / 80476 CI 10P 32.5	Oct 7 1965 Oct 13 1972 4bars S-23x19mm
17	SILVER PLUME, CO / 80476 CI 10P 31.0	Apr 10 1973 Aug 1 1984 4bars S-24x19mm
18	SILVER PLUME, CO / 80476 CI 10P 33.0	Oct 29 1985 May 2 1989 4bars S-23x20mm
19	SILVER PLUME, CO / 80476 CI 10P 32.0	Aug 2 1993 4bars S-24x18mm
20	SILVER PLUME CO / 80476 CI 10P 34.0	Jul 31 2001 Sep 28 2001 4bars S-13x24mm

SILVER PLUME / SILVERPLUME – Continued



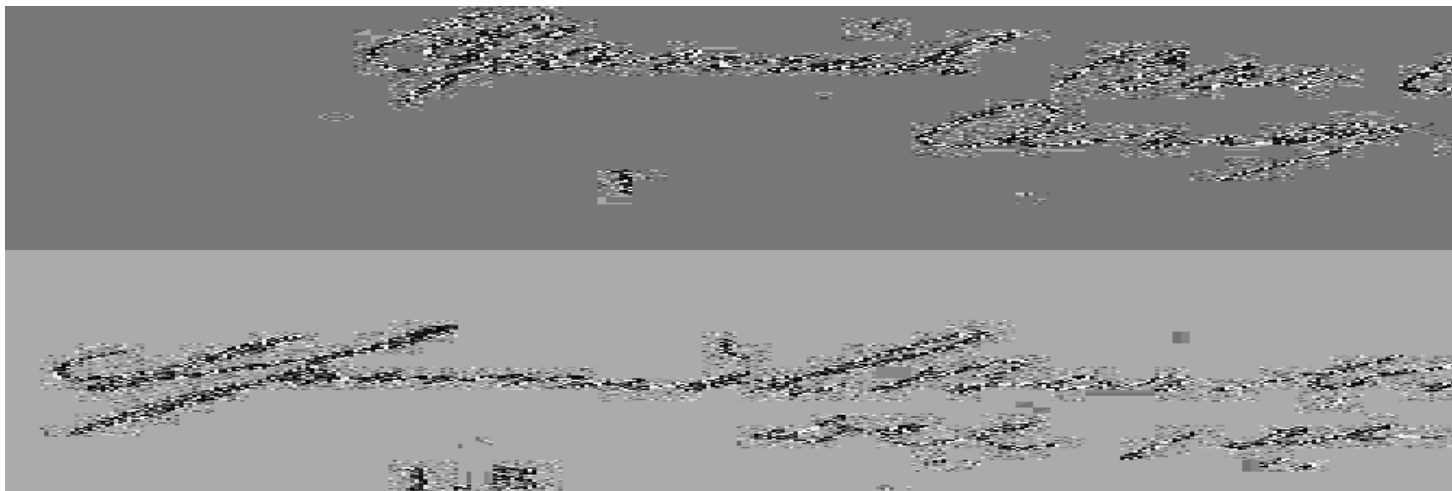
SPANISH BAR – Continued



Spanish Bar Col January 15, 1867 The manuscript year date cancels the stamp

Confirmed types of postal markings

1	Spanish Bar Col Ter MS	Mscp Pen cancel	Aug 16 1861
1.A	Spanish Bar Col MS	Mscp Pen cancel "1867"	Jan 15 1867
1.B	Spanish Bar C T MS	Mscp Pen cancel	Feb 19 1864 Aug 9 1866
2	SPANISH BAR / COL. CI 10P 26.0	Hstp Target, 4-ring 18mm, cork, smudge, negative X-roads	Nov 1 1865 Oct 23 1876
3	SPANISH BAR / COLO CI 10P 24.0	Hstp Cork, smudge	Nov -- 1881



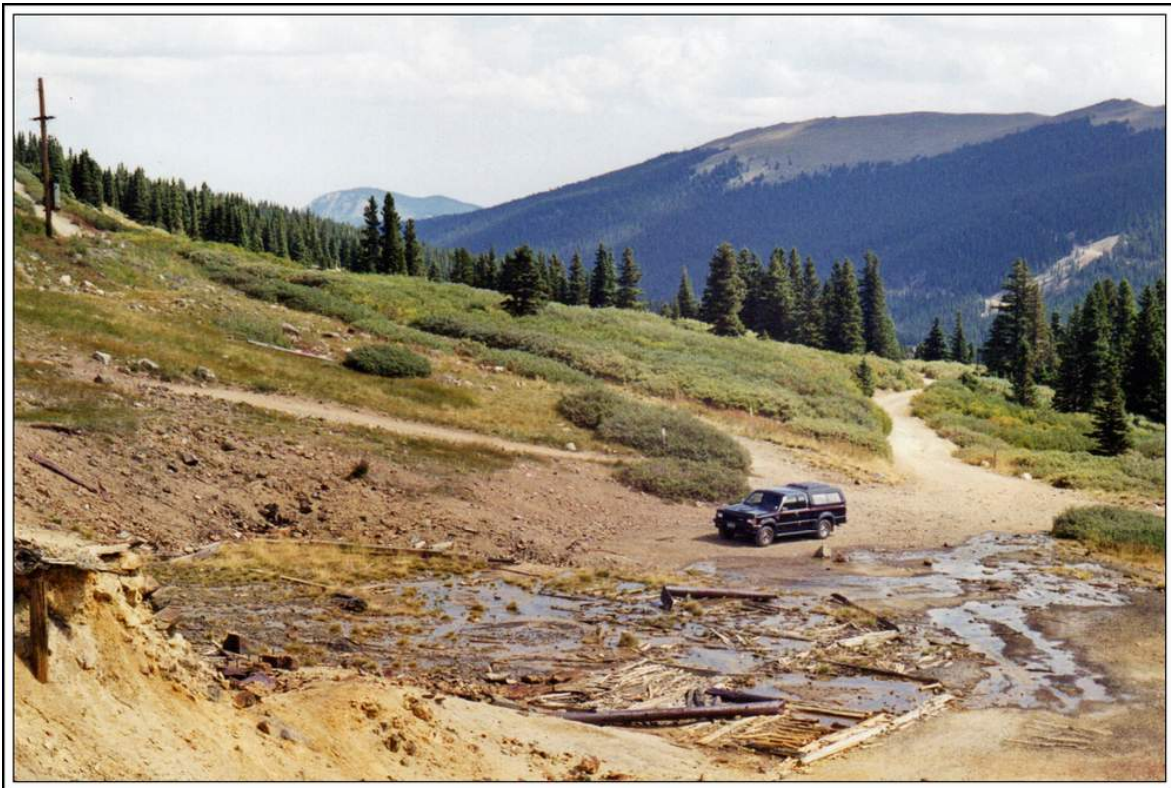
WALDORF

The Stevens Mine, in the upper end of the Leavenworth Creek valley was reportedly discovered in 1868. This became one of a group of mines that formed the Argentine Mining District. It is possible that this early development included the East Argentine Post Office.

The site of Waldorf is above timberline at 11,666 feet. Although the location was on a road over Argentine Pass to Montezuma in Summit County it was a difficult road and the poor transportation hindered exploitation of the mines. By the end of the nineteenth century Edward John Wilcox had consolidated many of the claims as the Waldorf Consolidated Mining Company. The Santiago Mine was another good producer at Waldorf.

In 1906 a railroad, the Argentine Central, was constructed to Waldorf and with improved transportation the Waldorf Mine with its rich ore, became a significant producer. The community of Waldorf was a company town providing housing for the miners.

The railroad found another source of revenue, excursion trains and an additional stretch of track was constructed beyond Waldorf to the summit of Mount McClellan. The post office at Waldorf had a considerable business processing post cards from the tourists. Thus, even though the post office lasted only six years, Waldorf postmarks are quite common.



Overview of the site of Waldorf, Colorado, taken from the mine dump
Photograph by James L. Ozment **September 9, 1998**

WALDORF – Continued

To reach Waldorf begin in Georgetown and drive south on the road to Guanella Pass. Two-and-half miles, and after the steep climb up from Georgetown, and near the first of series of small lakes (Green Lake) a side road to left begins the real trip to Waldorf. This is most definitely a four-wheel drive road.

The first portion of this road is extremely steep, with switchbacks and loose rock and gravel. After a mile plus, you reach the grade of the Argentine Central Railroad. From here to Waldorf is another five miles along the old railroad grade. It is a rather gentle grade, but it is narrow and has been poorly maintained so it is not an easy Sunday drive. You will know you are at Waldorf when you reach the large tailings pile that is about all that remains.

After driving my Jeep to Waldorf in September 1998 it was hard to remember that in July 1958, almost daily, I drove a 1949 Plymouth over this same road. Road maintenance ain't what it used to be. In 1958 there were still several buildings at Waldorf. Unfortunately they fell prey to vandalism and only a few charred boards remain. In spite of this, if you have the vehicle and the nerve, this is a great trip.

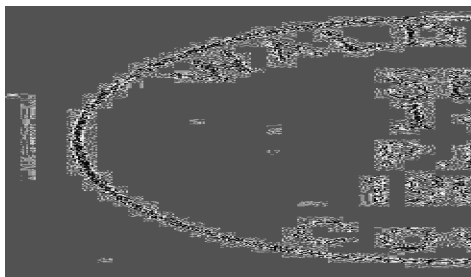
Latitude = 39:38:15 North Longitude = 105:46:01 West

Chronology of the Post Office

May 30 1906	---	SE/4 Sec 3 T5S R75W 1/2 mile northwest of Leavenworth Creek	
		Proposed postmaster - John Nisbet LeConte	
Oct 5 1906		Established	
Oct 5 1906		LaConte, John N.	
Dec 13 1907		Fuller, George H.	Rescinded
Oct 5 1906		Le Conte, John N.	
Jul 6 1908		Sprouse, Don Fernando	
Feb 29 1912		Discontinued Mail to Silver Plume	

Confirmed types of postal markings

1	WALDORF, / COLO.	Jun 22 1907 Jun 10 1911
	CI 10P 31.0	4bars S-23x14mm



YANKEE

Yankee was a small mining community located on the south slope of Yankee Hill northeast of Alice. The site was on the most direct stage route from Central City to Georgetown. Although this route had been in use for many years it was not until the early 1890's that gold ore was discovered on Yankee Hill.

A number of mines were opened but none were particularly rich and active mining at Yankee lasted for only a few years. The town that developed around the mines was unplanned, with no apparent town center or main street.

The boom period for the town followed the acquisition of the rights to nearly one hundred properties by the Yankee Consolidated Mining, Milling and Tunneling Company.

YANKEE – Continued

It is generally accepted that Northern sympathizers during the Civil War named Yankee Hill and the town took its name from the hill. There is one suggestion that the name came from William H. Yankee, an enterprising mining man who was also a Civil War veteran and a Yankee.

To reach the site of Yankee, follow the directions to Alice. In Alice find the intersection of Lake Road and Mine Road. Lake Road circles Silver Lake and Mine Road climbs the hill away from Alice. This is a steep road that rapidly deteriorates. It is definitely a four-wheel drive road. A mile and a half from Lake Road and you are in Yankee. Continue a half-mile more to the east and you can see the mine dumps at the head of Cumberland Gulch that represent Lombard. Some mine dumps, a few foundations and scattered debris from mining are all that remain at Yankee.

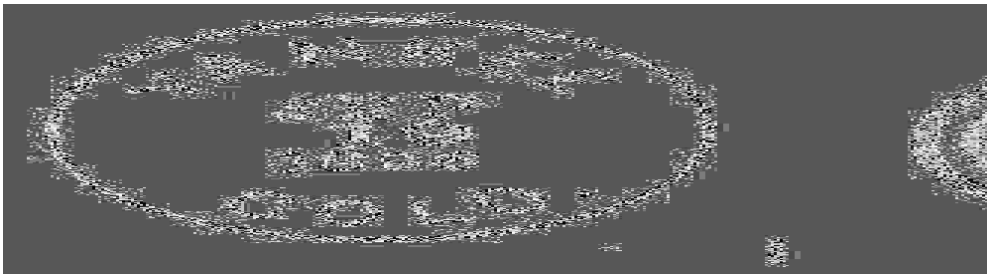
Latitude = 39:49:35 North Longitude = 105:37:24 West

Chronology of the Post Office

Mar 21 1892	----	T2S R74W The sketch map shows it in the SW/4 SW/4 Sec 36	
		Proposed postmaster - Mrs. Loretta G. Hawk	
Nov 2 1893		Established	
Nov 2 1893		Hawk, Loretta G.	
Apr 13 1896		Titus, Melzar	
Feb 26 1898		Arnold, Nancy M.	
May 18 1902		Waugh, Jesse S.	
Dec 27 1904		Uhland, Wilhelmine E.	
Sep 1 1905		Steffan, William E.	Declined
Nov 10 1905		Musgrove, Benjamin F.	
May 1 1906		Arnold, Nancy M.	
Oct 22 1907		Slymaker, Katherine	
Feb 28 1910		Discontinued Mail to Alice	

Confirmed types of postal markings

1	YANKEE / COLO.	Mar (?) 31 1894 Sep 19 1896
	CI 10P 28.0	Hstp Target, 4-ring 18mm
2	YANKEE / COLO.	Feb 12 1898 Jan 27 1910
	CI 10P 27.5	Hstp Target, 3-ring (and 4 ring) 18mm



YATES

Settlement at Bakerville began in 1867 when the Baker Mining Company located a mill at the confluence of Kelso Creek with Clear creek. The settlement never grew to any size and there was not a post office by the name of Bakerville.

However, in 1882 Charles I. Yates filed an application for a post office. The request was granted and Charles Yates became the one and only postmaster of Yates, Colorado. In less than a year the post office closed.

YATES – Continued

In 1884, another post office opened in the area. This was Graymont, located a short distance east of Yates / Bakerville. It too had a brief life.

To visit Yates, follow the directions to Graymont.

Chronology of the Post Office

Jul 31 1882	---	Not reported Silver Plume six miles easterly, 100 yards south of Clear Creek. The mail stage passes the door.
Sep 4 1882		Established
Sep 4 1882		Yates, Charles I.P
Feb 8 1883		Discontinued Mail to Silver Plume

Confirmed types of postal markings

NO POSTAL MARKINGS HAVE BEEN REPORTED FROM YATES



Site Overview – Yates/Graymont and Gray’s Peak from I-70
William H. Bauer photograph May 18, 2004

BIBLIOGRAPHY – CLEAR CREEK COUNTY

REFERENCES – BOOKS

- ALDRICH, John L. *Ghosts of Clear Creek County*; 1984; Continental Graphics; Lakewood, Colorado; 35 pp; illus.; map
- BENSON, Maxine *1001 Colorado Place Names*; 1994; University Press of Kansas; Lawrence, Kansas; 237pp; sketches
- BOYD, Leanne C. and CARSON, Glenn *Atlas of Colorado Ghost Towns, Volume I*; 1984; Carson Enterprises; Deming, New Mexico; 134pp; illus.; maps
- BOYD, Leanne C. and CARSON, Glenn *Atlas of Colorado Ghost Towns, Volume II*; 1984; Carson Enterprises; Deming, New Mexico; 185pp; illus.; maps
- BROWN, Robert L. *Jeep Trails to Colorado Ghost Towns*; 1963; Caxton Printers, Ltd.; Caldwell, Idaho; 245 pp; illus.
- BROWN, Robert L. *Ghost Towns of the Colorado Rockies*; 1968; Caxton Printers, Ltd.; Caldwell, Idaho; 401 pp; illus.
- BROWN, Robert L. *Colorado Ghost Towns, Past, Present*; 1973; Caxton Printers, Ltd.; Caldwell, Idaho; 371 pp; illus.
- CROFUTT, George A. *Croftutt's Gripsack Guide of Colorado*, 1885; Overland Publishing Co; Omaha, Nebraska; Reprint: Cubar Associates; 1966; Golden, Colorado; 266pp; illus.; maps
- DAWSON, J. Frank *Place Names in Colorado*; 1954; J. Frank Dawson Publishing Co.; Denver, Colorado; 52pp
- EBERHART, Perry *Guide to the Colorado Ghost Towns and Mining Camps*; 1968; fourth, revised edition; Swallow Press; Chicago, Illinois; 496 pp; illus.
- ELLIS, Erl H. and ELLIS, Carrie Scott *The Saga of Upper Clear Creek*; 1983; Jende-Hagen Book Corporation; Frederick, Colorado; 266 pp; illus.; maps
- GRISWOLD, Don and Jean *Colorado's Century of Cities*; 1958; Smith-Brooks; 307pp; illus.
- JESSEN, Kenneth *Ghost Towns Colorado Style - Volume One - Northern Region*; 1998; J. V. Publications; Loveland, Colorado; 508 pp; illus.; maps
- MURRAY, Robert B. *Colorado Ghost Town and Mining Camp Guide*; 1976; Colorado Recreation Guides, Inc.; Commerce City, Colorado; 112 pp; illus.; maps
- PEARL, Richard M. *Springs of Colorado*; 1975; Earth Sciences Publishing Company; Colorado Springs, Colorado; 35 pp; illus.
- BANCROFT, Hubert Howe *The Works of, History of Nevada, Colorado, and Wyoming*; 1890; The History Company; San Francisco, California; pp 323-658
- WOLLE, Muriel Sibell *Stampede to Timberline*; 1949 (8th printing 1959); Poertner Lithographing Co.; Denver, Colorado; 544 pp; maps; illus.

REFERENCES – COLORADO MAGAZINE

- DAVIS, Elmer O. *The Argentine Central Railway*; November 1948, Vol. 25, No. 6, pp 255-259
- DIGERNESS, Helen Sidney *Jesse Summers Randall and Pioneer Georgetown*; November 1945, Vol. 22, No. 6, pp 258-265
- HAFEN, LeRoy *Colorado Cities - Their Founding and the Origin of Their Names*; September 1932, Vol. 9, No 5, pp 170-183
- Place Names in Colorado* [Alternate Title: *The Names of Colorado Towns*]
Prepared by the Colorado Writers Project; *Colorado Magazine*; Serialized in Volumes 17-20

BIBLIOGRAPHY – CLEAR CREEK COUNTY – Continued

REFERENCES – *HERITAGE COLORADO*

The Story of a Valley: Georgetown Loop Historic Mining and Railroad Park; 1984 issue 3, pp 17-48, illus.; (No author listed)

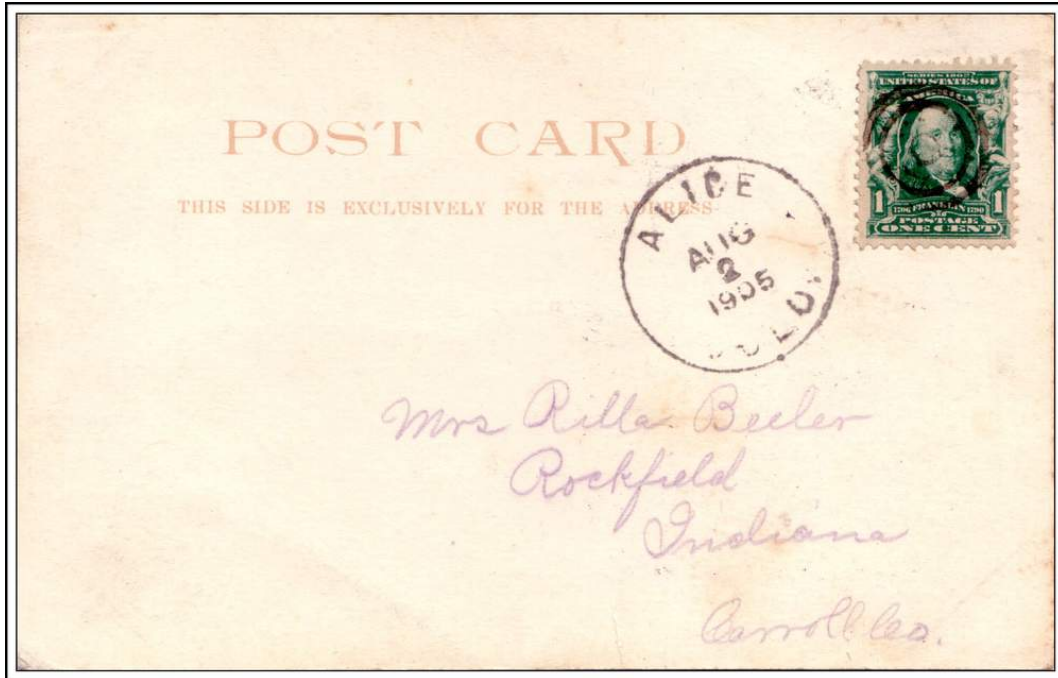
ROGERS FILE

This is a card file of information on places and place names in Colorado, collected by James Grafton Rogers. It is located at the History Colorado Center, Denver and is available on microfilm.

GEOGRAPHIC SITE LOCATION REPORTS OF THE POST OFFICE DEPARTMENT

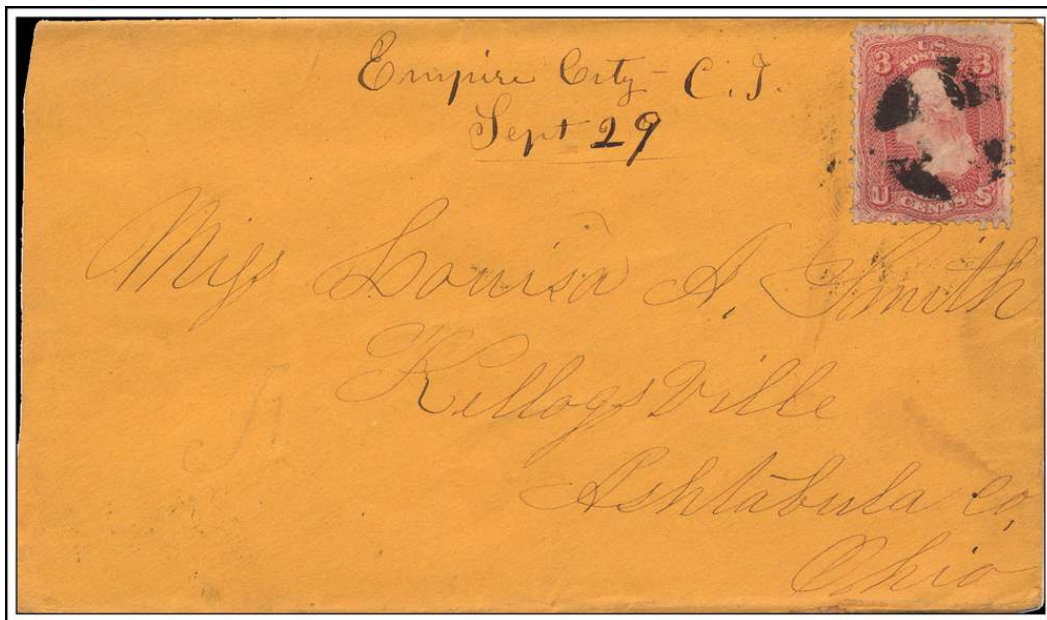
These are documents filed with applications for the approval of a new post office, at the time of a move of a post office and upon periodic requests of the Post Office Department. The documents may include a detailed location using the Federal Land Survey System, reference of distance to local streams and rivers, to railroads and to nearby existing post offices.

A GALLERY OF CLEAR CREEK COUNTY COVERS



ALICE / COLO.

August 2, 1905

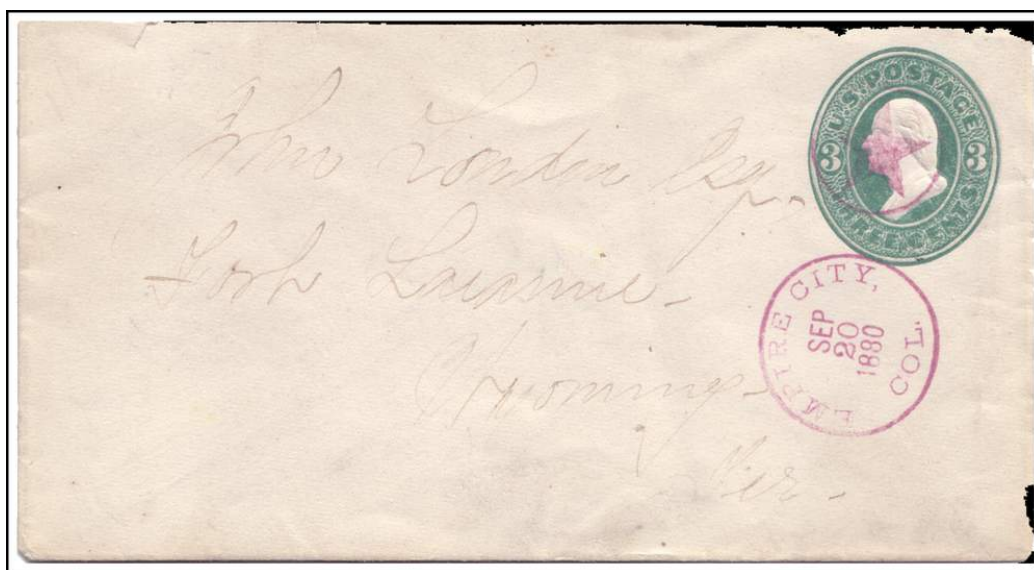


Empire City – C. T.

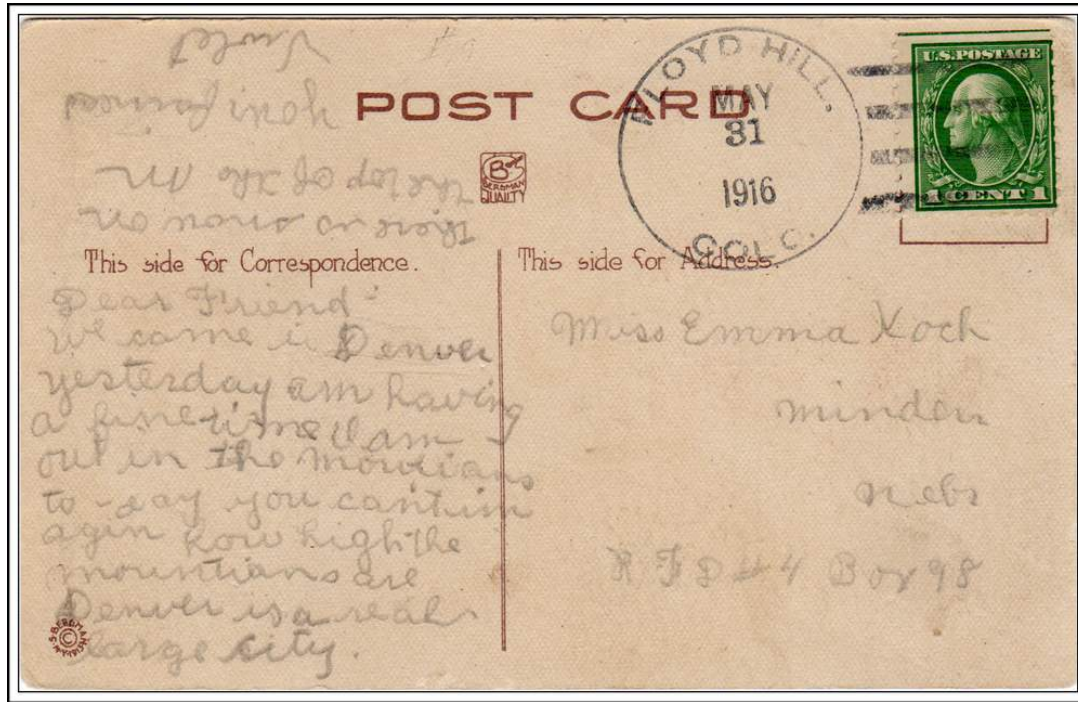
September 29



EMPIRE CITY / C. T. October 13 With a fancy shield killer



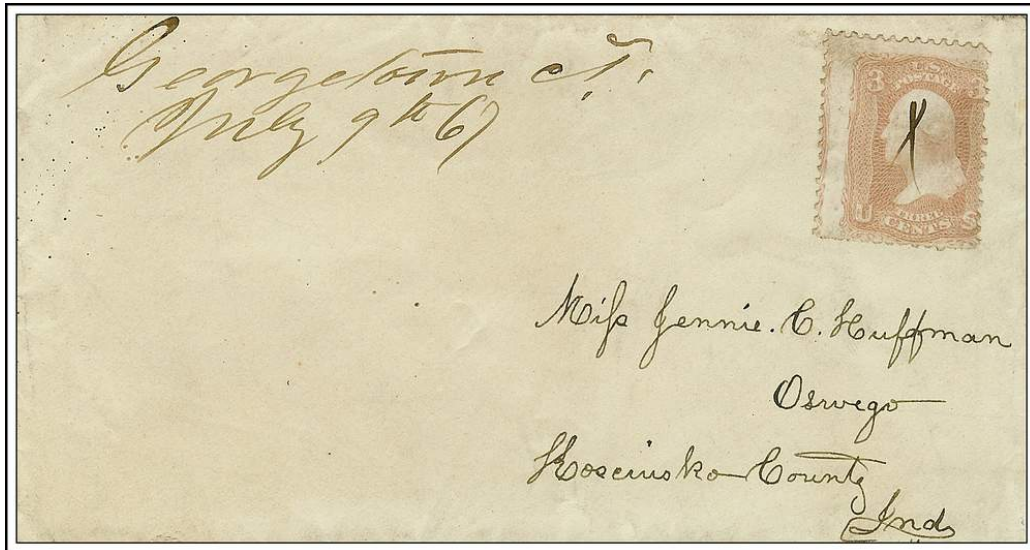
EMPIRE CITY, / COL. September 20, 1880



FLOYD HILL, / COLO. May 31, 1916

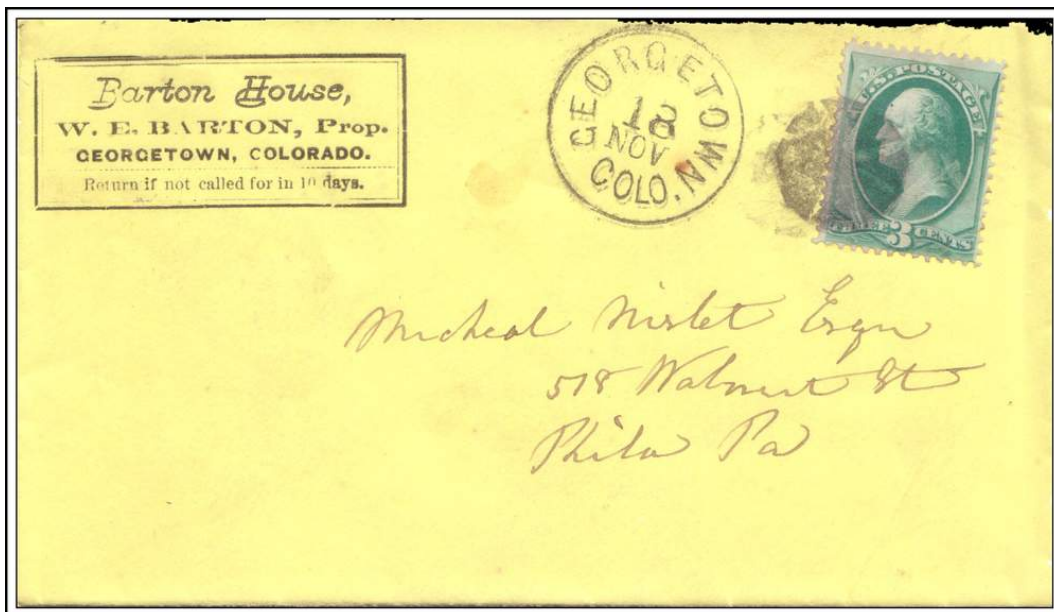


FREELAND, / COLORADO November 13, 1881



Georgetown C.T.

July 9, 1867



GEORGETOWN / COLO.

November 18



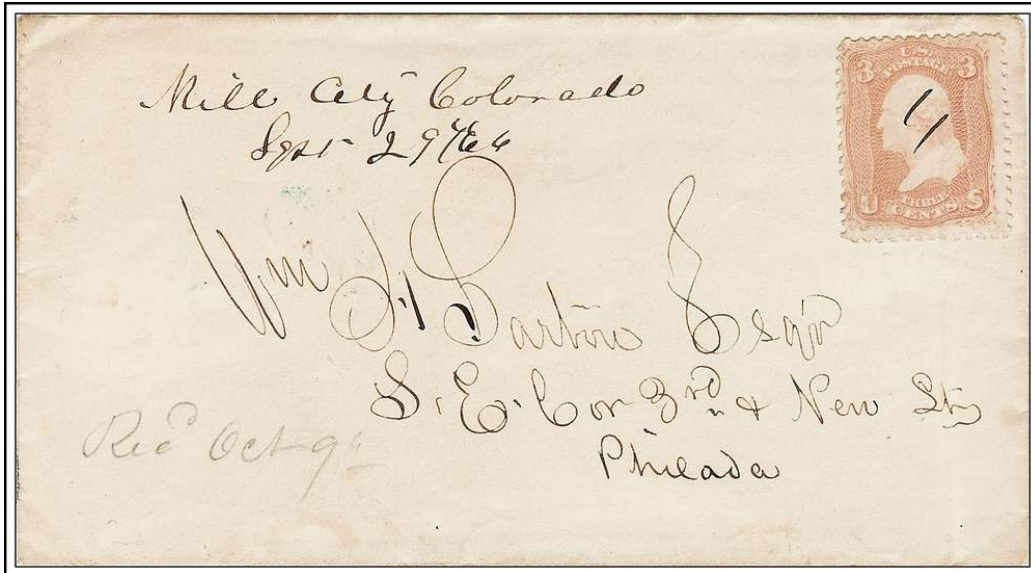
IDAHO / COL.

November 24, 1875



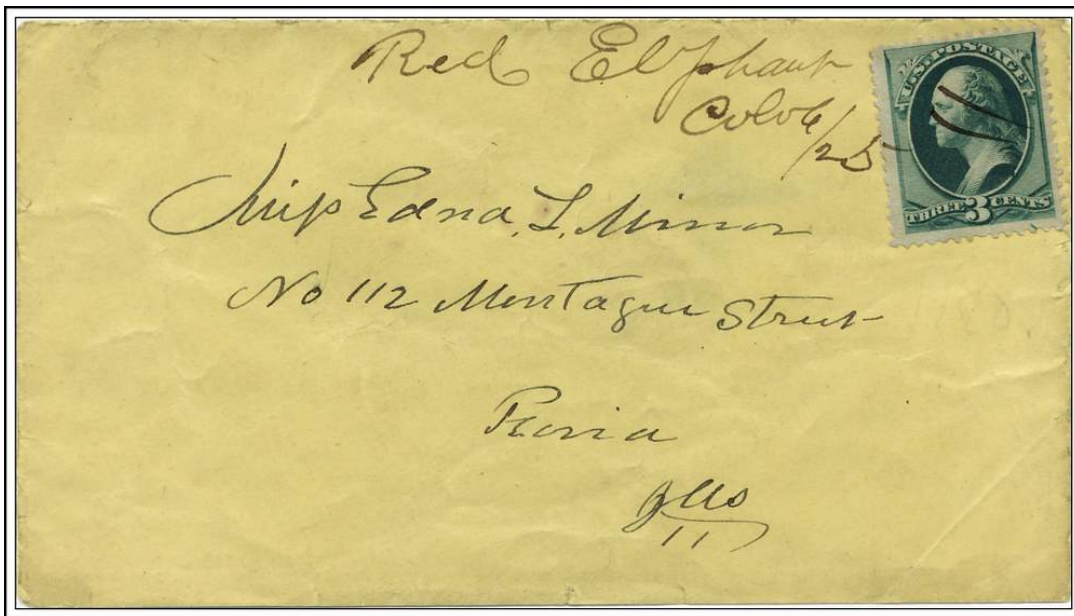
LAWSON, / COLO.

J-- 30, 1879



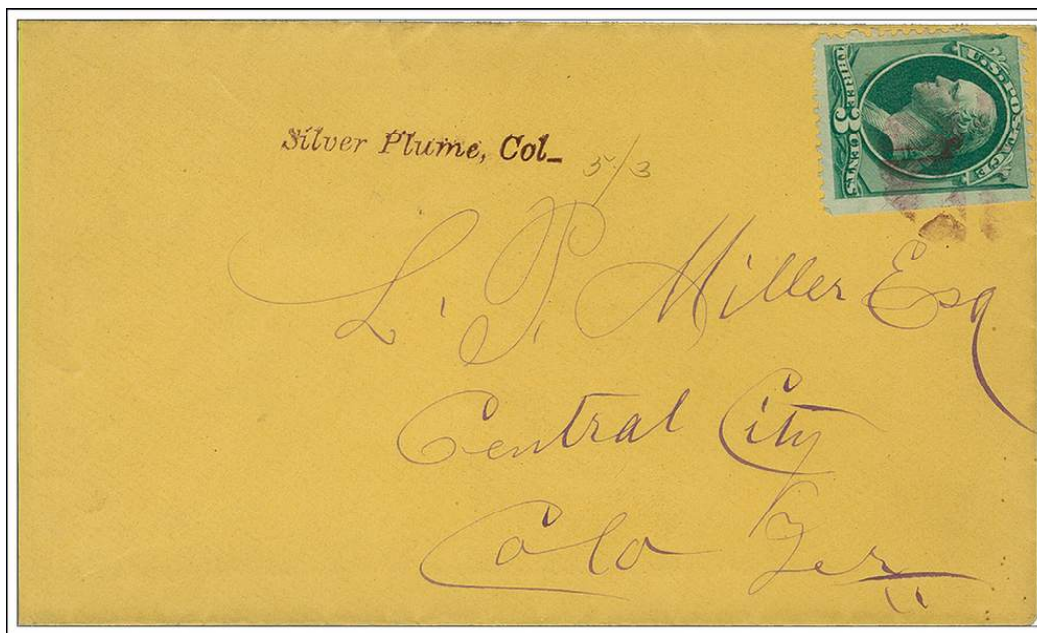
Mill City Colorado

September 29, 1866



Red Elephant / Colo

June 25



Silver Plume, Col_ May 3
This example does not show a final small "o" above the underline



YANKEE / COLO. October 4, 1899 With PO Seals

