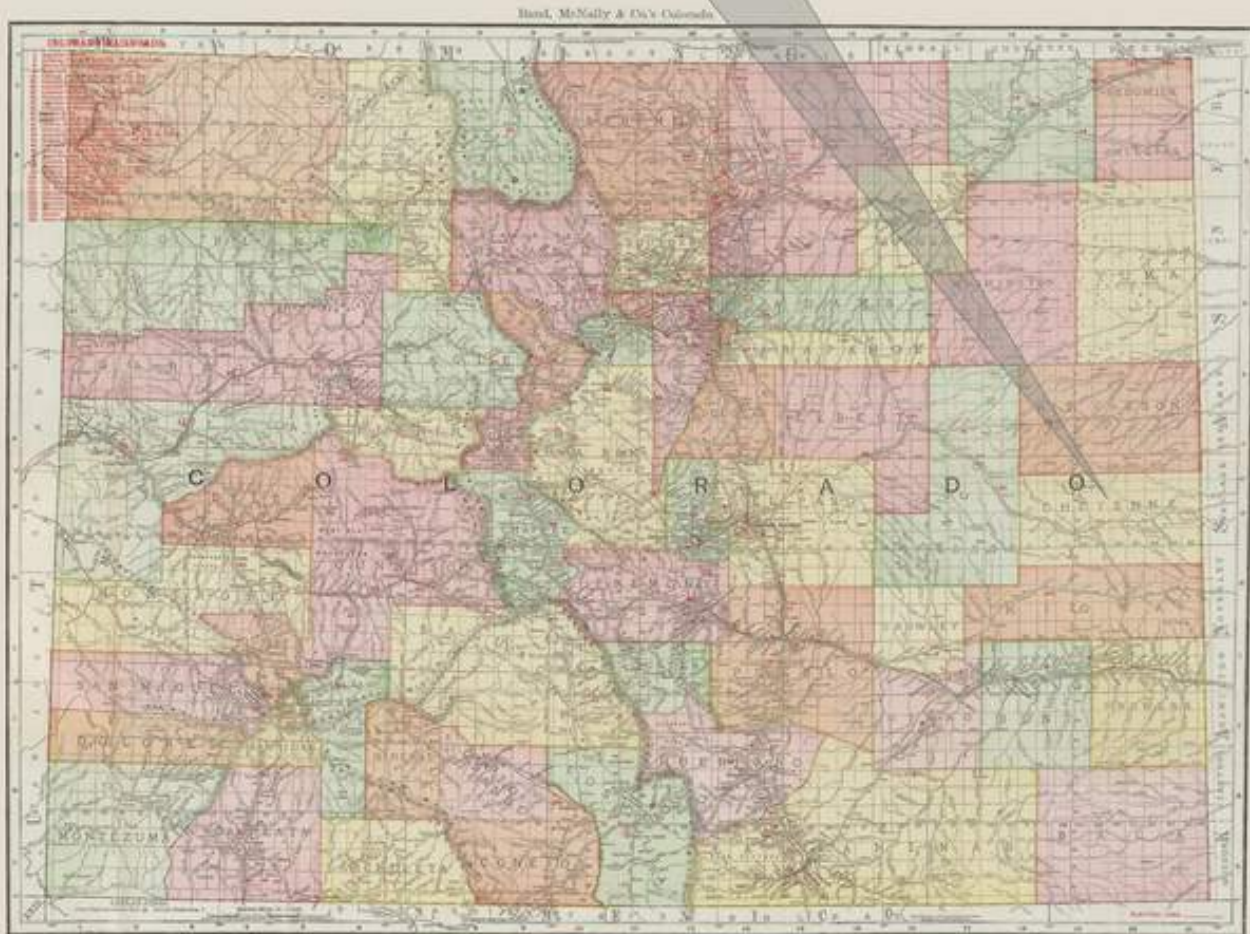


# Cheyenne County



Map courtesy of <http://www.davidrumsey.com>

*Established: March 25, 1889*

*County Seat: Cheyenne Wells*

## **CHEYENNE COUNTY**

By William H. Bauer

Cheyenne County is situated in the central portion of easternmost Colorado. It is rectangular in shape, measuring a bit more than sixty-two miles east-west by twenty-nine miles north-south. The county is bounded on the north by Kit Carson County, on the east by Wallace and Greeley Counties in Kansas, on the south by Kiowa County and by Lincoln County on the west.

The present day Cheyenne County was originally within the early Indian Reserve. In 1870, the Reserve became Greenwood and Bent counties within Colorado Territory. Greenwood County soon disappeared and was incorporated into Bent County. On April 11, 1889 Bent County and the eastern portion of Elbert County were subdivided to create Cheyenne, Lincoln, Kit Carson, Kiowa, Prowers and Otero Counties and a greatly reduced Bent County. The village of Cheyenne Wells has been the county seat since the county was formed.

Geographically, Cheyenne County is a part of the Great Plains. The upper reaches of the Smoky Hill River drain the eastern portion of the county. Numerous seasonal streams have created an irregular surface that for the most part slopes south and southeastward, draining towards the Arkansas River. A small portion in the north drains towards the Republican River. The highest elevation in the county is about 5,200 feet in the northwest corner. The lowest is along the border with Kansas at somewhat less than 3,800 feet.

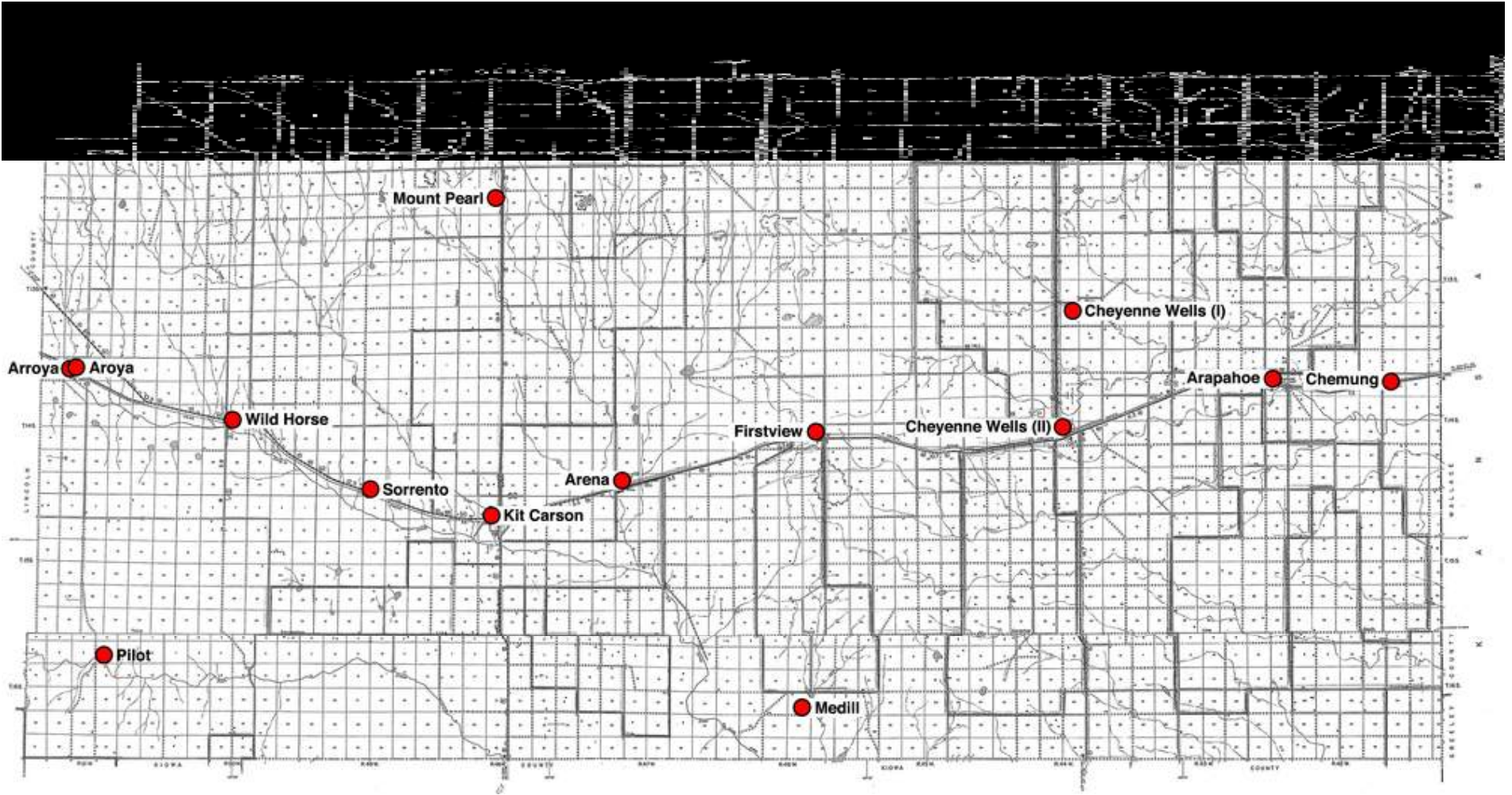
The economy of Cheyenne County is almost exclusively based on agriculture. However, with only moderate annual rainfall and no significant rivers, farming is limited and depends on irrigation from deep wells. Raising livestock is the principal agricultural activity.

Settlement in Cheyenne County was slow to develop. The first post office in the county was Cheyenne Wells, a stage station on a branch of the Smoky Hill River. That office lasted little more than a year. Kit Carson was the second post office in the county, established as a construction camp for the Kansas Pacific Railroad building to Denver. The Kansas Pacific soon became a part of the Union Pacific and it was along the railroad that all but three of the post offices in Cheyenne County were to be located. The railroad continues to operate as a main route from Kansas City to Denver. Kit Carson was also the origin point for the Arkansas Valley Railroad, bound for Pueblo. That road existed briefly, but became obsolete and was abandoned shortly after the Atchison, Topeka and Santa Fe built along the Arkansas River to Pueblo.

The road grid in Cheyenne County is not as dense as in other counties where farming is more extensive. From east to west, US Highway 40 parallels the Union Pacific Railroad. US Highway 385 runs north to south across the county, intersecting US 40 at Cheyenne Wells. US 287 enters the county from the west in conjunction with US 40 and a mile east of Kit Carson turns south towards Amarillo, Texas. About three miles east of the Cheyenne-Lincoln County boundary, Colorado Highway 94 intersects with US 40. It runs almost due west to Colorado Springs.

There have been post offices at fourteen locations in Cheyenne County. Only three, Cheyenne Wells, Kit Carson and Wild Horse remain active.

The literature devoted to Cheyenne County is rather sparse. To date, there is no comprehensive county history and only a few articles or pamphlets discuss the more important towns in the county. The smaller settlements have barely received mention in some regional studies.



Post Office Location Map – Cheyenne County



**Pilot, Colorado      Ruins of a building**  
Photograph by William H. Bauer      October 17, 1996

## **ARAPAHOE**

The origins of this community are rather indefinite. It seems that the first settlement was in 1870 in conjunction with the construction of the Kansas Pacific Railroad. An Arapahoe is shown on an 1877 map. However, it was not until 1906 that the present community began to develop. G. W. Bailey and W. W. Howard filed a town plat on February 26, 1908. The Arapahoe Post Office opened April 4, 1906 with G. W. Bailey as the postmaster. W. W. Howard would also serve as postmaster at Arapahoe.

Located on the railroad, Arapahoe was a shipping point for cattle and other produce from the surrounding area. It continues to serve that purpose.

In 2003, Arapahoe is still a small, well-kept community with a few businesses, a grain elevator and a railroad siding. It is on the north side of the railroad and US 40, seven miles west of the Kansas State line.

Arapahoe was named for the Arapahoe Indian tribe. The spelling varies, often appearing without the final letter "e."

Latitude = 38:51:30 North    Longitude = 102:11:35 West    ARAPAHOE CEMETERY

### **Chronology of the Post Office**

<b>Apr 4 1906</b>	---	<b>NW/4 Sec 12 T14S R43W 200 feet north of the Union Pacific Proposed postmaster - George W. Bailey</b>
<b>May 5, 1906</b>		<b>Established</b>
<b>May 5 1906</b>		<b>Bailey, George W.</b>
<b>Jul 27 1910</b>		<b>Carlson, Oscar W.</b>
<b>May 2 1911</b>		<b>Howard, William W.</b>
<b>Mar 12 1914</b>	----	<b>NW/4 Sec 12 T14S R43W 1/4 mile north of Ladder Creek</b>

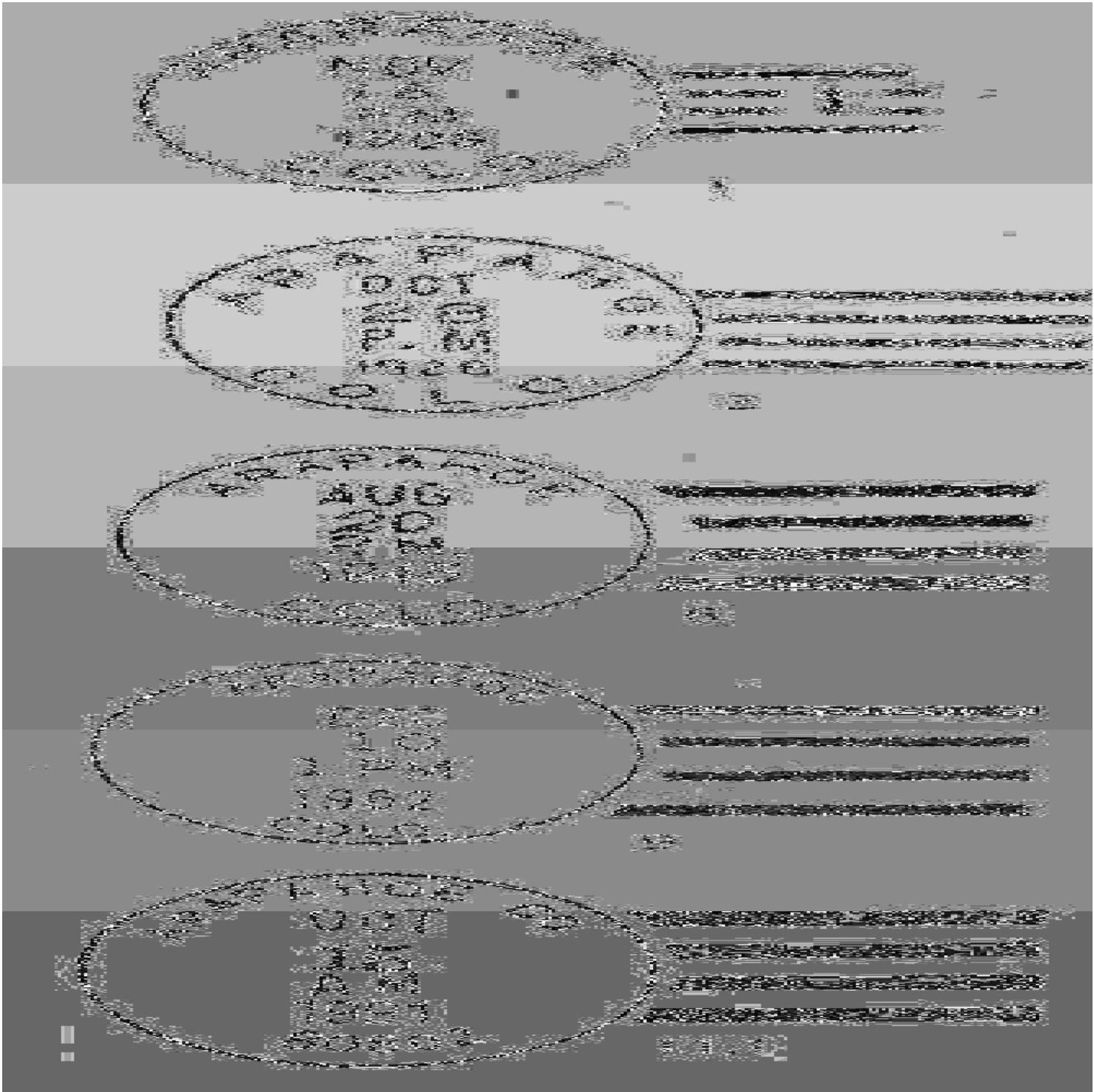
**ARAPAHOE – Continued**

Dec 26 1914	Howard, Lenna B	
Jan 27 1923	---- NW/4 Sec 12 T14S R43W	1/4 mile north of Ladder Creek
Jul 1 1926		Office made Presidential
Feb 12 1927	Hill, Amy	
Feb 20 1931	Hill, Amy	
Aug 5 1935	Pfost, Joseph A.	Nominated
Aug 16 1935	Pfost, Joseph A.	Confirmed
Aug 21 1935	Pfost, Joseph A.	Appointed Presidential
Aug 29 1935	Pfost, Joseph A.	Commissioned
Sep 16 1935	Pfost, Joseph A.	Assumed charge
Aug 2 1939	Pfost, Joseph A.	Nominated
Aug 4 1939	Pfost, Joseph A.	Confirmed
Aug 21 1939	Pfost, Joseph A.	Appointed Presidential
Aug 29 1939	Pfost, Joseph A.	Commissioned
Nov 13 1941	---- NE/4 Sec 12 T14S R43W	Union Pacific tracks 25 rods south of office
Mar 31 1942	Pfost, Ethel A.	Acting
Apr 1 1942	Pfost, Ethel A.	Assumed charge
Feb 4 1943	Pfost, Ethel A.	Nominated
Mar 17 1943	Pfost, Ethel A.	Confirmed
Mar 18 1943	Pfost, Ethel A.	Appointed Presidential
Apr 16 1943	Pfost, Ethel A.	Commissioned
May 16 1943	Pfost, Ethel A.	Assumed charge
Jan 31 1971	Pfost, Joseph A.	Officer in charge
Jul 30 1971	Baird, Richard L.	Officer in charge
Nov 27 1971	Schweers, Martin L.	Appointed & Assumed charge
May 28 1981	Stewart, Wayne J.	Officer in charge

**Confirmed types of postal markings**

1	ARAPAHOE / COLO. CI 10P 30.0	Doane Type 3 with 1	Mar 11 1907 Jul 5 1911
1.1	ARAPAHOE, / COLO. CI 10P 31.0	4bars S-23x18mm	Dec 30 1912 Jan 9 1913
2	ARAPAHOE. / COLO. CI 10P 32.0	4bars S-24x20mm	Jan 25 1920
3	ARAPAHOE / COLO. CI 10P 31.0	4bars S-24x14mm	Oct 28 1926 Feb 6 1933
4	ARAPAHOE, / COLO. CI 10P 31.0	4bars S-23x14mm, letters close together	Mar 17 1936 Oct 28 1937
5	ARAPAHOE, / COLO. CI 10P 34.0	4bars S-26x20mm	Jan 6 1939 Nov 26 1943
6	ARAPAHOE / COLO. CI 10P 32.0	4bars S-23x18mm	Jul 9 1940 May 4 1952
7	ARAPAHOE, / COLO. CI 10P 33.0	4bars S-24x18mm	Mar 27 1953 Dec 15 1954
8	ARAPAHOE / COLO. CI 10P 32.0	4bars S-24x02mm, wide spaced letters	Apr 9 1959 Apr 13 1960
9	ARAPAHOE / COLO. CI 10P 32.0	4bars S-24x19mm	Dec 10 1962 Nov 9 1964
10	ARAPAHOE, CO / 80802 CI 10P 31.0	4bars S-24x18mm	Dec 18 1967 Jul 15 1977
11	ARAPAHOE, CO / 80802 CI 10P 33.0	4bars S-24x19mm	Jul 20 1989 Nov 13 1989
11.1	ARAPAHOE CO / 80802 CI 10P 33.0	4bars S-24x19mm	Oct 15 1991
12	ARAPAHOE CO / 80802 CI 10P 35.0	4bars S-21x14mm	May 12 1997

ARAPAHOE – Continued



**ARENA**

There has been very little mention of Arena in the Colorado historical literature. One source identifies it as, “A sidetrack and section house on the Union Pacific Railroad, six miles east of Kit Carson.” Another source claims it was a, “railroad post office.”

### **ARENA – Continued**

The location is on the railroad and US 40, four miles east of the intersection where US 287 turns south from US 40. In 2003, a siding, a grain elevator and a single building are all that remain in the vicinity near the intersection with Cheyenne County Road 25.

In 1996, if I was in the same location, there was a ranch to the north of US 40. Those buildings seem to now be gone. It is likely that Arena was never more than a few buildings near a railroad siding that was used to ship livestock and other produce.

My Spanish to English dictionary translates, “arena” as “sand”. Perhaps this is a reference to Big Sandy Creek, which is a short distance south of the site.

### **Chronology of the Post Office**

<b>Jan 12 1910</b>	---	<b>E/2 NE/4 &amp; W/2 NW/4 Sec 32 T14S R47W (should be E/2 NW/4 W/2 NE/4)</b>
<b>May 2 1910</b>		<b>Established</b>
<b>May 2 1910</b>		<b>Priess, Otto L.</b>
<b>Feb 28 1914</b>	---	<b>SW/4 Sec 32 T14S R47W 1 mile east of Eureka Creek. 260 feet north of the U.P. tracks</b>
<b>Dec 11 1916</b>		<b>Hylen, Esther A.</b>
<b>Nov 13 1917</b>		<b>Towner, John W.</b>
<b>Mar 28 1923</b>		<b>Ordered closed</b>
<b>Apr 30 1923</b>		<b>Discontinued Mail to Kit Carson</b>

### **Confirmed types of postal markings**

<b>1</b>	<b>ARENA, / COLO. CI 10P 31.0</b>	<b>4bars S-23x13mm</b>	<b>Mar 9 1911 Oct 21 1912</b>
<b>2</b>	<b>ARENA, / COLO. CI 10P 32.0</b>	<b>4bars S-25x20mm</b>	<b>Jan 7 1914 Sep 8 1914</b>



### **AROYA**

The name of the original settlement and post office at this location was spelled Arroya. The post office of that name lasted from 1877 until 1881. When a new post office opened in 1889 it was with the shorter spelling Aroya. The new spelling is a corruption of a Spanish word for rivulet, usually referring to an intermittent stream. The townsite was north of the railroad and Big Sandy Creek was south of the railroad.

It has also been reported that the original settlement was a short distance west of the later site. A fire destroyed that settlement and the new location was chosen as being lower in the valley and where wells were easier to dig.

The location was on the ranch owned by T. S. Schilling, one of the founders of the Schilling Tea Company.

Aroya developed into a small community with its peak years in the 1910-1920 period. Apparently it had enough promise for the future that the Union Pacific Land Company filed a town plat on June 20, 1907. However, when a new highway (to become US 40) was built north of the settlement, the community of Aroya slowly declined.

**AROYA – Continued**

As with all of the Cheyenne County settlements along the Union Pacific, there was a siding at Aroya that could be used for loading livestock for shipment to market.

To reach the site, drive to the intersection where Colorado Highway 94 intersects US 40. Drive west on Colorado 94 to the railroad and turn southeast on the dirt road that runs alongside the railroad. A short distance down the road, the old school building is on the north side of the road and about a mile from Colorado 94 there is a cluster of ranch buildings. The dirt road runs through the ranch, turns north and intersects Colorado 94 near the intersection with US 40. The school building is boarded up, but seems to still be in pretty good condition.

Latitude = 38:51:15 North Longitude = 103:07:30 West

**Chronology of the Post Office**

May 29 1889	----	NW/4 Sec 5 T14S R51W 1/2 mile north of the Big Sandy, 1/2 mile west of Aroya Creek. North side of U.P., 20 feet from tracks Proposed postmaster - Joseph O. Dostal	
Sep 17 1889		Established	
Sep 17 1889		Dostal, Joseph O.	
Jul 12 1905		Southworth, James B.	Let go
Sep 12 1907		Simms, Ezra H.	
Dec 19 1907		Bryant, William Y.	
Jan 20 1909		Crisp, Clinton S.	
Sep 30 1912		Dyer, Mary G.	
Feb 23 1914	----	NW/4 Sec 5 T14S R51W 1/2 mile north of the Big Sandy, 300 feet north of the Union Pacific RR	
Aug 1 1916		Paulson, Easter L.	
Sep 10 1917		Spangler, Charles W.	Declined
Apr 5 1918		Gillespie, Hazel	
Jun 9 1920		Meyers, Edna	
Aug 4 1921		Holman, Pearly M.	Acting
Nov 13 1921		Schilling, Dietrich	
Nov 13 1923		Smith, William	Acting
Feb 1 1924		Johnston, Aggie	
Mar 10 1926		Sallsman, John W.	Acting
Oct 5 1926		Stouffer, Allison M.	
Mar 16 1928		Hensley, John	Acting
Aug 14 1928		Hensley, John	Appointed
Sep 25 1929		Mooreland, Florence	Acting
Dec 6 1929		Mooreland, Florence	Appointed & Confirmed
Mar 20 1930		Mooreland, Florence	Commissioned
Jul 7 1933		Bennet, Mrs. Esther Mary	Assumed charge
Jul 28 1933		Bennet, Mrs. Esther Mary	Acting
May 8 1934		Bennet, Mrs. Esther Mary	Confirmed
Jun 15 1934		Bennet, Mrs. Esther Mary	Commissioned
Oct 24 1941	----	Sec 5 T14S R51W U.S.-40 is 2-1/2 miles north of post office. U. P. Aroya Station is 1250 feet southeast of post office	
Apr 1 1949		Miley, Mrs. Eula B.	Assumed charge
Apr 19 1949		Miley, Mrs. Eula B.	Acting
Jul 28 1949		Bennet, Mrs. Esther Mary	Assumed charge
Aug 11 1949		Bennet, Esther Mary	Acting
Oct 24 1949		Bennet, Mrs. Esther Mary	Confirmed
Oct 27 1949		Bennet, Mrs. Esther Mary	Appointment rescinded
Nov 17 1949		Bennet, Mrs. Esther Mary	Confirmed
Dec 2 1949		Bennet, Mrs. Esther Mary	Commissioned
Dec 16 1949		Bennet, Esther Mary	Possession

**AROYA – Continued**

Nov 22 1963	Smith, Nila J.	Acting, Possession
Apr 15 1964	Smith, Nila J.	Commissioned
Apr 24 1964	Smith, Nila J.	Possession
Mar 25 1965	Discontinued Mail to Wild Horse	
Mar 26 1965	Ordered closed	

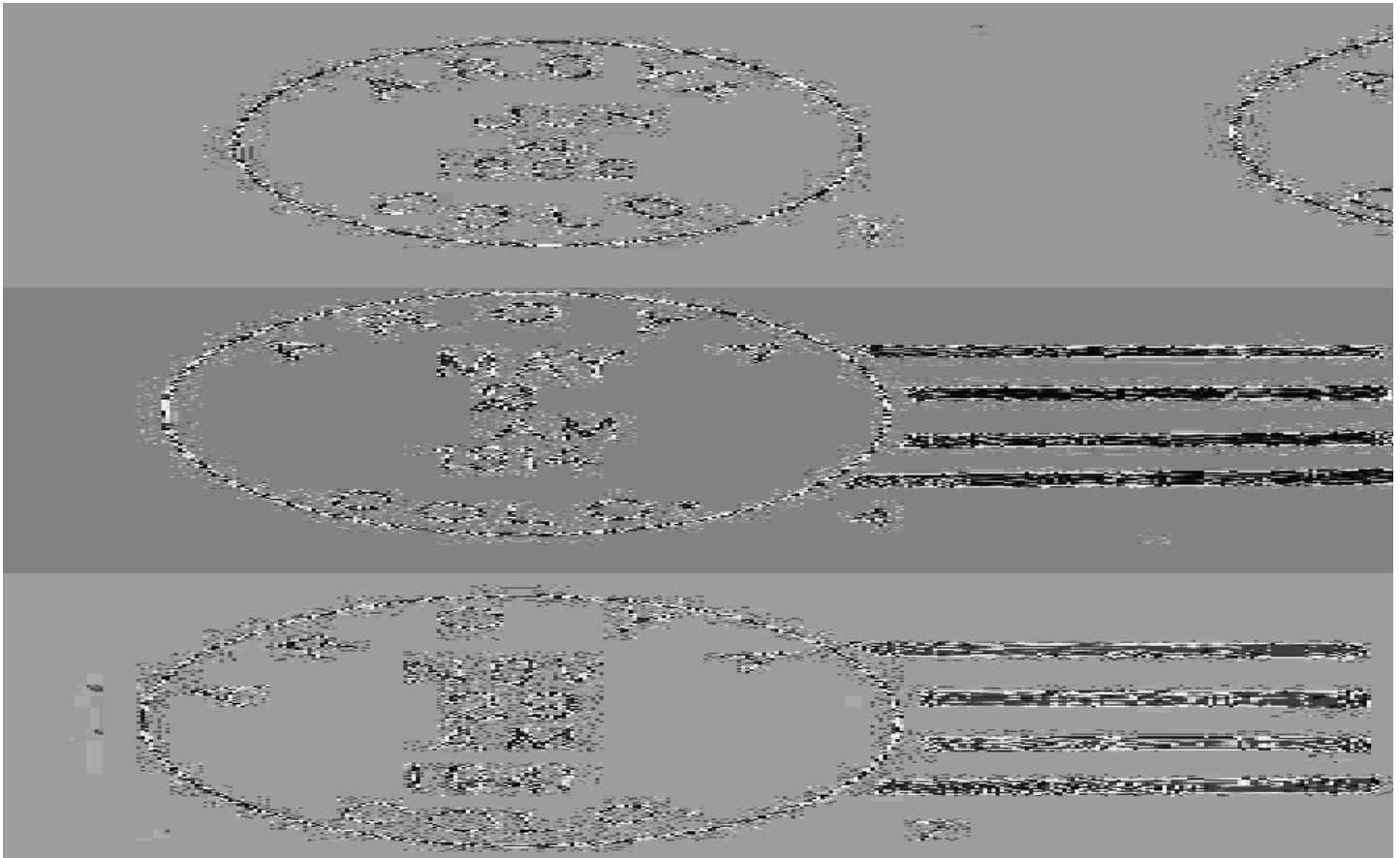


**The old school building adjacent to the site of Aroya, Colorado**  
 Photograph by William H. Bauer August 12, 2003

**Confirmed types of postal markings**

1	AROYA/ COLO. CI 10P 27.0	Hstp Target, 4-ring 17mm	Dec 19 1897 Jun 4 1902
2	AROYA, / COLO. CI 10P 30.0	Doane Type 2 with 1	May 25 1906 Mar 9 1909
3	AROYA, / COLO. CI 10P 31.0	4bars S-23x14mm	Mar 19 1910 Oct 20 1912
4	AROYA/ COLO. CI 10P 32.0	4bars S-24x19mm	May 2 1914 Oct 12 1914
5	AROYA/ COLO. CI 10P 33.0	4bars S-24x19mm	Mar 6 1931
6	AROYA/ COLO. CI 10P 34.0	4bars S-23x19mm	Jun 13 1935
7	AROYA/ COLO. CI 10P 33.0	4bars S-25x19mm	Sep 13 1939 Dec 29 1942
8	AROYA/ COLO. CI 10P 32.0	4bars S-??x18mm	Apr 21 1947 Feb 11 1956
9	AROYA/ COLO. CI 10P 33.0	4bars S-24x20mm, wide spaced letters	Feb 22 1960 Jan 4 1962

**AROYA – Continued**



**ARROYA**

Originally a stage station on the Smoky Hill Trail, Arroya became a station on the Kansas Pacific Railroad. The original site was a short distance west of the more recent location. Reportedly the first site was destroyed by fire. Following the fire the small community moved to the ranch owned by T. S. Schilling. This site was at a lower elevation and closer to the arroyo (Big Sandy Creek) from which the town had drawn its name. The lower elevation made it easier to dig wells tapping into the subsurface flow of the creek.

The Arroya post office was discontinued in 1881. When it re-opened in 1889, for some reason the spelling had changed to Aroya.

Refer to Aroya for directions to and a description of the location in 2003.

**Chronology of the Post Office**

<b>Jan 16 1877</b>	<b>Established</b>
<b>Jan 16 1877</b>	<b>Ellis, Alvin A.</b>
<b>Feb 11 1878</b>	<b>Discontinued</b>
<b>May 7 1879</b>	<b>Re-established</b>
<b>May 7 1879</b>	<b>Freeman, Thomas</b>
<b>Jan 17 1881</b>	<b>Discontinued</b>

**Confirmed types of postal markings**

**NO POSTAL MARKINGS HAVE BEEN REPORTED FROM ARROYA**

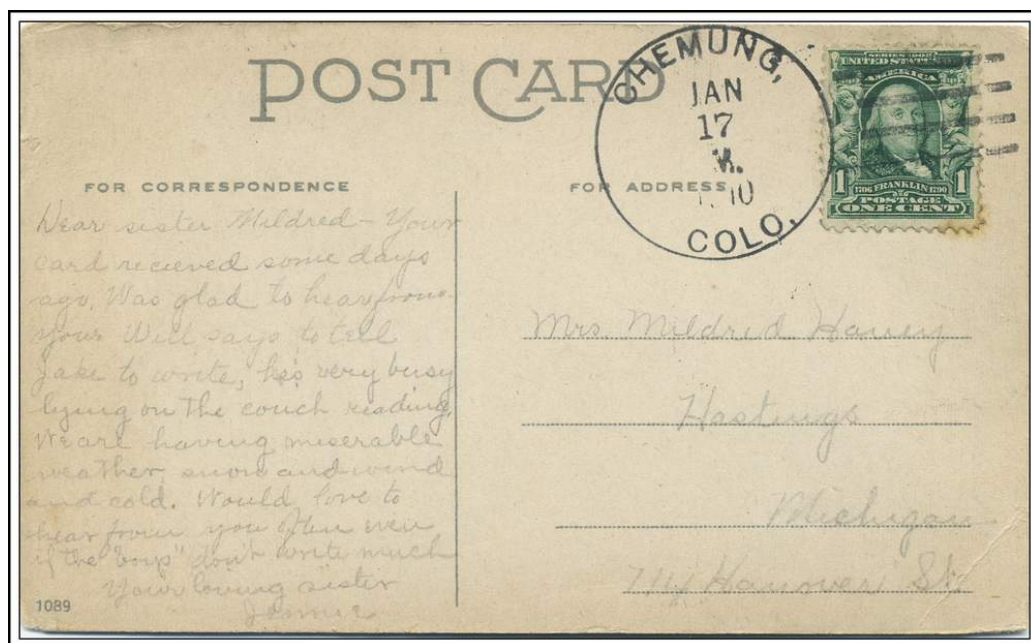
**CHEMUNG**

Chemung was another of the small settlements along the Union Pacific Railroad in Cheyenne County. Although it has been briefly mentioned in the literature, no description of the settlement is available. Although described as a, "railroad post office" it is more likely that it was a ranch post office providing mail service for the surrounding area. The Chemung Post Office was established only a few months after the office at Arapahoe. It is reasonable to assume that Chemung could not compete with Arapahoe and thus was closed in 1911.

Visits to the site in 1997 and again in 2003 found that nothing remains. The location, on Cheyenne County Road T at the intersection with County Road 58 is open fields.

The name is that of a town in New York State and is said to mean, "big horn" in the Algonquin Indian language.

To reach the site, beginning at the Kansas State line, drive west one-half mile, turn north on Road 60, crossing the Union Pacific tracks to Road T. Turn west and go two miles to Road 58. The site was in the southeast quadrant of the intersection. Options are to continue west on US 40 to Road 58 and turn north to Road T, or drive east on US 40 four and one-half miles from Arapahoe to Road 58.



**CHEMUNG, / COLO.      January 17, 1910**

**Chronology of the Post Office**

Nov 26 1906	----	NW/4 Sec 11 T14S R42W Union Pacific running by proposed post office.
Dec 22 1906		Established
Dec 22 1906		Smithey, Albert
May 5 1907		Bland, William E.
Nov 29 1907		Armstrong, Roy E.
Mar 25 1908		Burton, John C.
Nov 18 1909		Heathcote, Charles
Aug 15 1910		Discontinued Mail to Arapahoe

**CHEMUNG – Continued**

**Confirmed types of postal markings**

1 CHEMUNG, / COLO.  
CI 10P 31.0

Jul 31 1908 Jun 4 1910

4bars S-23x13mm



**CHEYENNE WELLS (I)**

The original location of Cheyenne Wells was four or five miles north of the modern town of Cheyenne Wells. It was a stage station on the Smoky Hill Trail.

The *Historic Trail Map of the Lamar Quadrangle* by Glenn R. Scott locates the early Cheyenne Wells less than a mile east of US Highway 385 on one of the branches of the Smoky Hill River. Scott shows this as the area where the Smoky Hill Trail North and the Smoky Hill Trail South separated. This agrees with the location given by Margaret Long in her book, *The Smoky Hill Trail*: the NE/4 of section 28, Township 13 South, Range 44 West.

From Cheyenne Wells, drive north five miles to the bridge over the stream. The site was east of the highway. In 1997 there was an active ranch complex north of the stream and east of the highway.

**Chronology of the Post Office**

No document was found in the Cheyenne County Geographic Site Location Reports.

Feb 10 1869	Established
Feb 10 1869	Fahey, James
Apr 11 1870	Discontinued

**Confirmed types of postal markings**

**NO POSTAL MARKINGS HAVE BEEN REPORTED FROM CHEYENNE WELLS (I)**

**CHEYENNE WELLS (II)**

The arrival of the Kansas Pacific Railroad in 1870 spelled the end of the Smoky Hill Stage Route and of the original Cheyenne Wells. Activity shifted south to the railroad, but it was five years before a new Cheyenne Wells Post Office opened on the railroad.

In 1889, when Cheyenne County was authorized Cheyenne Wells became the county seat. With this added prominence the town was incorporated in 1890. As county seat Cheyenne Wells continues to be a modest sized community providing services to the surrounding ranches and farms. Livestock dominate the economy but with irrigation, farming is possible. Irrigation water is now drawn from deep wells that tap the prolific and widespread Ogallala Aquifer.

In 1894 an experimental farm was established near the town and was where the techniques of contour farming were developed.

The name was a combination of the Cheyenne Indian tribal name with the wells that were present at the original site.

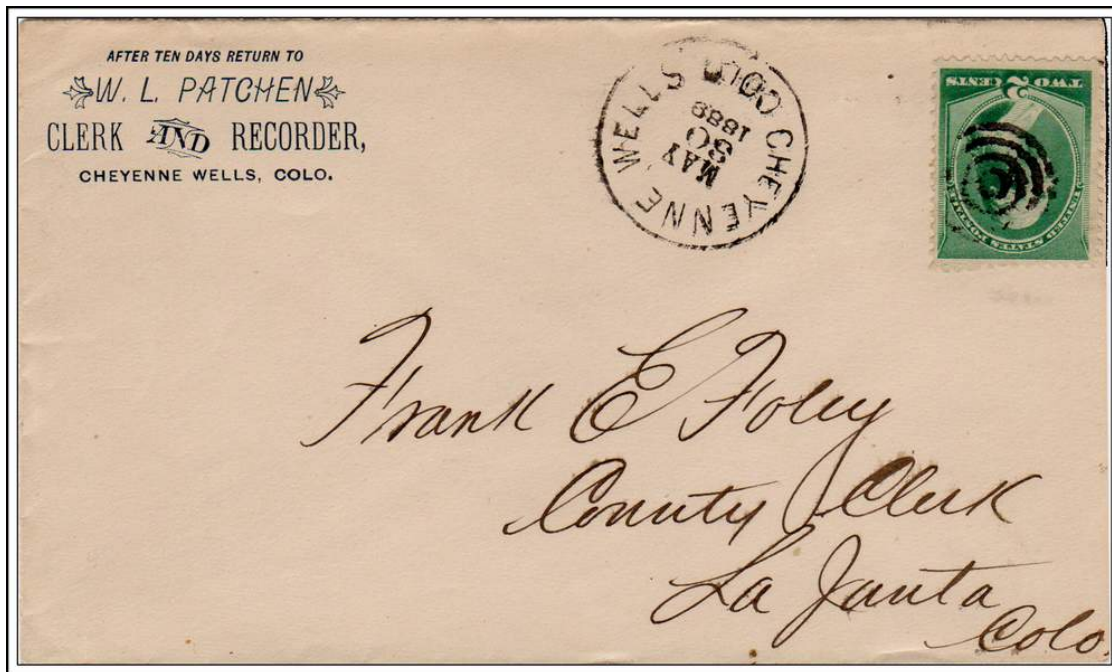
It is claimed that Cheyenne was not the name the tribe called themselves. The name is attributed to the Sioux who called them the, “sha-hiyena” meaning, “those who speak a strange language.”

**CHEYENNE WELLS (II) – Continued**

Cheyenne Wells is at the junction of US Highway 40 and US Highway 385, about sixteen miles west of the Colorado-Kansas State line.

In 2003, the post office was on the east side of East First Street South, one block north of South First Street East (yes that can be a confusing pattern).

Latitude = 38:49:17 North Longitude = 102:21:10 West



**CHEYENNE WELLS / COLO.**

**May 30, 1889**

**Chronology of the Post Office**

May 8 1876	Established		
May 8 1876	McLane, Louis A.		
Apr 19 1881	---	Not surveyed 63 miles south of the Republican River, 22 miles north of Sand Creek. 50 feet from the Cheyenne Wells Station of the U.P. Railway	
Sep 11 1885	---	NW/4 NW/4 Sec 21 T1S R44W Post Office is in U.P.Ry. Building at Station	
May 8 1888		Cochran, Robert L.	
Apr 6 1889		Sheets, Robert H.	
Feb 18 1892		Pinkerton, Mervin	
Jun 8 1893		Beamer, Benjamin F.	
Aug 21 1895	Discontinued		
Oct 2 1895	Re-established		
Oct 2 1895		Tinsley, Julia F.	
Aug 27 1897		Farnsworth, Fannie	
Dec 9 1898	---	S/2 NW/4 & N/2 SW/4 Sec 21 T14S R44W 760 feet north of U.P. tracks, 1720 feet from depot	
Jun 13 1899		Noonan, William E.	
Jan 12 1900		Robertson, John B.	
Feb 15 1900		Robinson, Joseph	
Dec 7 1906		Ross, Jennie	
Feb 10 1908		Ross, Jennie	P&S [Apptd by President & confirmed by Senate]
Feb 1 1912		Ross, Jennie	P&S
May 3 1914	---	S/2 NW/4 & N/2 SW/4 Sec 21 T14S R44W	
Feb 15 1916		Baker, Samuel	P&S

**CHEYENNE WELLS (II) – Continued**

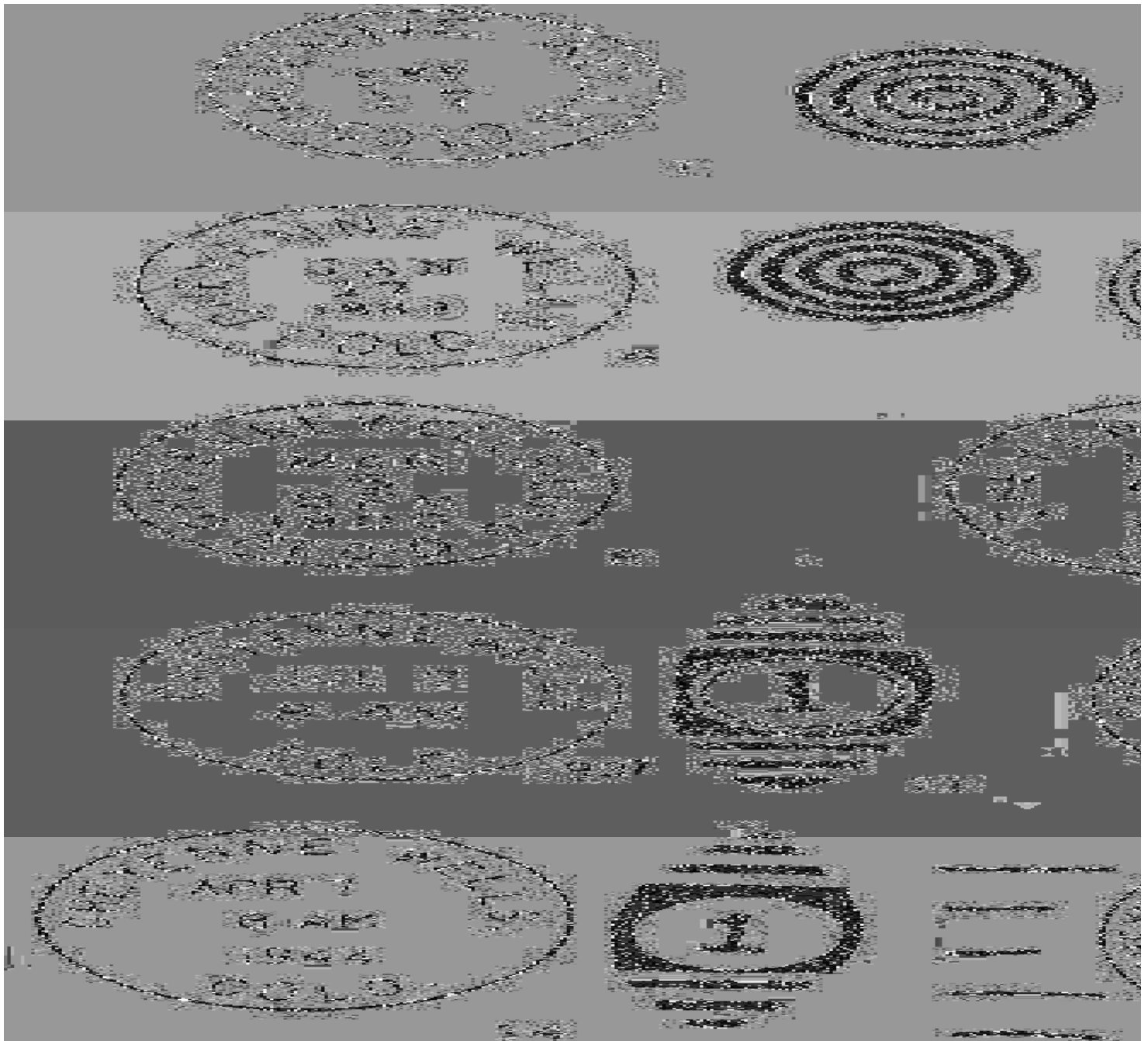
Jul 24 1918	Jenkins, J. A.	Acting
Dec 1 1918	Reese, Cephus A.	Acting
Jan 27 1919	Sadler, Vivian	P&S
Sep 1 1921	Sallade, Harry C.	Acting
Jul 12 1921	Shy, Ethel	Acting
Jun 21 1922	Shy, Ethel	P&S
Dec 10 1926	Shy, Ethel	P&S
Dec 10 1926	Quinn, Ethel R.	P&S, change in name
Dec 18 1930	Quinn, Ethel R.	P&S
Jun 15 1935	January, Frank P.	Nominated
Jul 2 1935	January, Frank P.	Confirmed
Jul 9 1935	January, Frank P.	Appointed Presidential
Jul 18 1935	January, Frank P.	Commissioned
Jul 25 1935	January, Frank P.	Assumed charge
Jan 8 1940	January, Frank P.	Nominated
Jan 11 1940	January, Frank P.	Confirmed
Jan 18 1940	January, Frank P.	Appointed Presidential
Feb 27 1940	January, Frank P.	Commissioned
Mar 31 1940	January, Frank P.	Assumed charge
Oct 30 1941 ----	NW/4 Sec 21 T14S R44W (Fenner Ave)	U.S. 40 south about 1080 feet, U.P. south 1380 feet
Jul 31 1950	Thyne, Daniel J.	Acting
May 9 1952	Thyne, Daniel J.	Nominated
May 21 1952	Thyne, Daniel J.	Confirmed
May 22 1952	Thyne, Daniel J.	Apptd Presidential & Commissioned
Jul 31 1952	Thyne, Daniel J.	Assumed charge
Nov 24 1978	Cooper, Ira R.	Officer in charge
Apr 21 1979	Lechman, Bernard F.	Appointed
Sep 8 1979	Benson, Robert L.	Officer in charge
Nov 5 1979	Larsen, Gladys M.	Officer in charge
Nov 5 1979	Schweers, M. L.	Officer in charge
May 31 1980	Saputa, Donald A.	Appointed

**Confirmed types of postal markings**

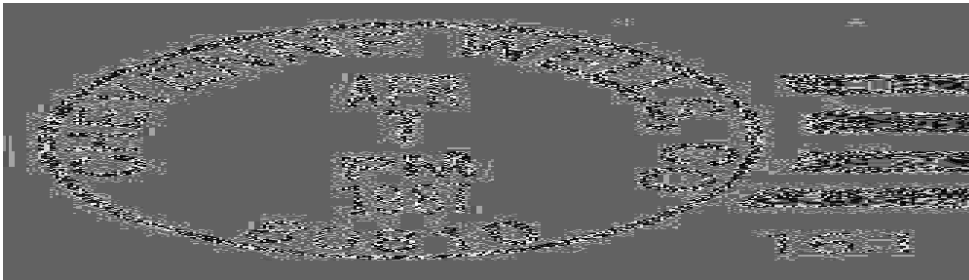
1	CHEYENNE WELLS / COLO. CI 10P 27.0	Hstp Target	Sep 17 187- Jul 10 188-
2	CHEYENNE WELLS, / COLO. CI 10P 28.0	Hstp Target, “*” at each side of CDS	May 27 1885
3	CHEYENNE WELLS, / COLO. CI 11P 26.5/17.0	Hstp Fancy, Double line Maltese cross	Aug 4 1887
4	CHEYENNE WELLS / COLO. CI 10P 28.0	Hstp Target, 4-ring	Jan 12 1886 Dec 6 1889
5	CHEYENNE WELLS, / COLO. CI 20P 29.0/26.0	Hstp Target, 4-ring	Jan 11 1890 May 16 1890
6	CHEYENNE WELLS / COLO. CI 10P 27.0	Hstp Grid, oval	Dec 30 1890 Nov 24 1891
7	CHEYENNE WELLS / COLO. CI 10P 28.0	Hstp Cork, negative X-roads, smudge	Feb 19 1896 May 16 1899
8	CHEYENNE WELLS, COLO. / REC'D. CI 10P 28.0	Hstp No killer	Mar 5 1900
9	CHEYENNE WELLS / COLO. CI 10P 29.0	Dplx Grid, 9 bar oval	Apr 6 1911 Jun 23 1919
10	CHEYENNE WELLS / COLO. CI 10P 31.0	4bars P-23x14mm	Nov 5 1925 Dec 20 1927
11	CHEYENNE WELLS / COLO. CI 10P 28.0	Dplx Oval, grid with # and circle	Aug 24 1931 Sep 18 1945

CHEYENNE WELLS (II) – Continued

12	CHEYENNE WELLS, COLO. / REGISTERED CI 11P 28.0/19.0	Aug 29 1930 Sep 1 1934 Hstp No killer, backstamp
13	CHEYENNE WELLS / COLO. CI 10P 20.0	Nov 18 1933 Jun 15 1960 Mach 6 wavy lines
14	CHEYENNE WELLS, / COLO. CI 10P 30.0	Dec 12 1938 Nov 7 1944 Dplx Grid, oval with 1
15	CHEYENNE WELLS, CO 80810 CI 11P 32.0/23.0	Nov 18 1971 Mar 22 1978 Rolr 6 wavy lines
16	CHEYENNE WELLS, CO / 80810 CI 10P 21.0	Aug 14 1967 Nov 10 1979 Mach 6 wavy lines
16.1	CHEYENNE WELLS, CO / 80810 CI 10P 31.0	Apr 7 1987 4bars S-25x18mm
17	CHEYENNE WELLS, CO 80810 CI 10P 32.5	May 12 1997 Apr 5 2001 4bars S-24x19mm



**CHEYENNE WELLS (II) – Continued**



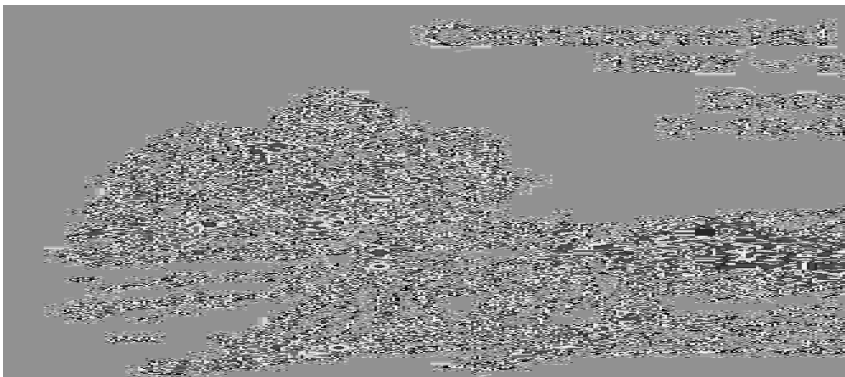
**CENTENNIAL STATION**

**Chronology of the Post Office**

**Jul 18 1987** Operated as a special commemorative station

**Confirmed types of postal markings**

**1** Cheyenne Wells, Co. 80810 // Centennial Station **Jul 18 1987**  
IR 00R 112.0x45.0 Pict Scene - Teepees, Water Tank, Steam Engine;  
Text - 1887-1987 / Date / 7-18-87



**FIRSTVIEW**

The first settlement here was in 1870 with the arrival of the Kansas Pacific Railroad. In spite of the early history, it did not develop into a semblance of a town until the early twentieth century. By 1907 there was sufficient population to warrant the establishment of the post office but it was another four years before a town plat was filed on September 11, 1911.

The name is believed to call attention to the fact that this was where travelers on the railroad got their first glimpse of Pikes Peak and the Rocky Mountains. The town name has been spelled both as First View and as Firstview.

The post office closed in 1961 and by 2003 all that remained were two abandoned buildings on the south side of US Highway 40 and one small building and a grain elevator on the north side of the highway.

Firstview is on US 40, about midway between Kit Carson (fourteen miles to the west) and Cheyenne Wells (eleven miles to the east). The crossroad is Cheyenne County Road 34.

**Chronology of the Post Office**

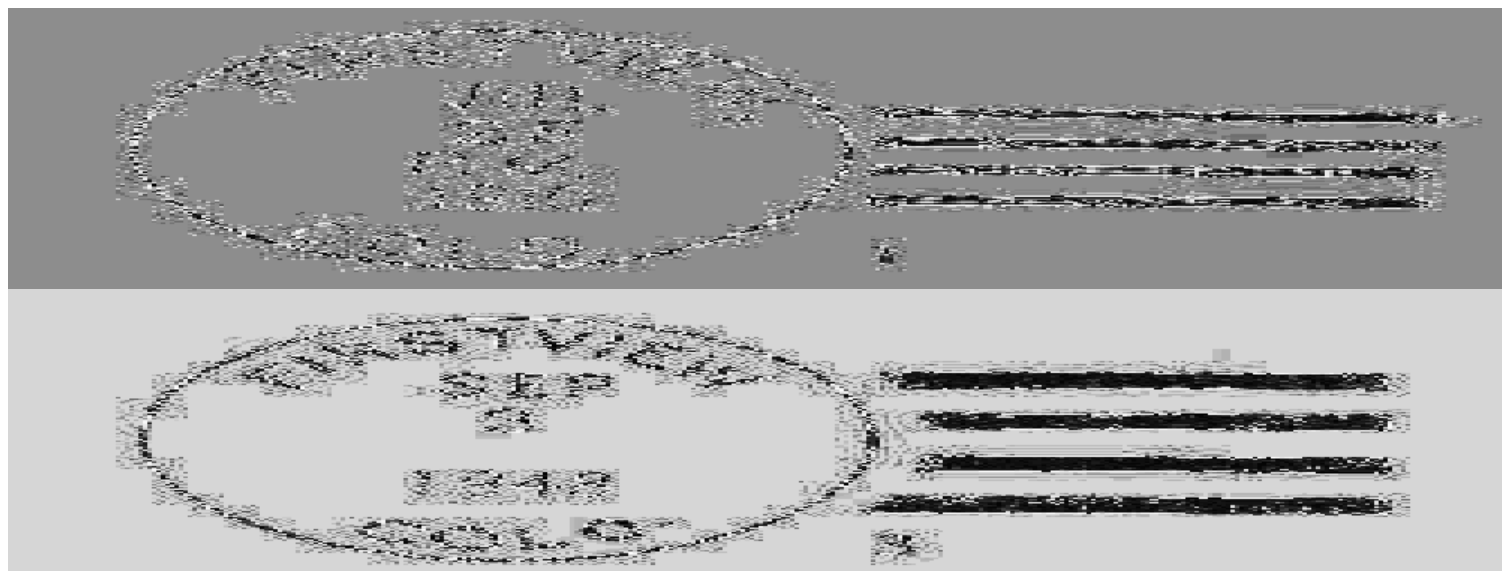
**Apr 3 1907** --- NE/4 Sec 22 T14S R46W Union Pacific track and station 16 rods south of post office  
**Jun 25 1907** Established

**FIRSTVIEW – Continued**

Jun 25 1907	Nelson, Agnes	
Aug 29 1908	Wilson, George	
Apr 27 1911	Melton, Clara E.	
Mar 10 1914	----	SE/4 Sec 22 T14S R46W 250 feet south of the Union Pacific track
May 2 1917	Woodrow, Charles S.	
Aug 30 1920	Elliot, Harry L.	
May 9 1922	Elliot, Nettie E.	
Mar 31 1923	----	NE/4 Sec 22 T14S R46W A move 150 yards south of previous location 125 yards south of the Union Pacific tracks
Jul 2 1924	Ekhoff, John G.	Acting
Jul 11 1924	Ekhoff, John G.	Appointed
Feb 23 1936	Halde, Mrs. Aline	Assumed charge
Mar 3 1936	Halde, Mrs. Aline	Acting
Feb 2 1937	Halde, Mrs. Aline	Confirmed
Mar 15 1937	Halde, Mrs. Aline	Commissioned
Oct 21 1941	----	Sec 22 T14S R46W (US Highway 40) Firstview Station U.P. Ry - 1/8 mile northwest
Oct 30 1961	Ordered closed	
Nov 24 1961	Discontinued	Mail to Cheyenne Wells

**Confirmed types of postal markings**

1	FIRSTVIEW, / COLO. CI 10P 31.0	4bars P-25x13mm	Nov 14 1908 Mar 26 1912
2	FIRSTVIEW, / COLO. CI 10P 32.5	4bars S-??x20mm	Apr 26 1913 Apr 21 1917
2.1	FIRSTVIEW, / COLO. CI 10P 33.0	4bars S-24x19mm	Feb 28 1937
3	FIRSTVIEW / COLO. CI 10P 32.0	4bars S-23x19mm	Sep 15 1939 Nov 24 1961
4	FIRSTVIEW / COLO. CI 10P 30.0/20.0	Hstp No killer	Apr 4 1955



**KIT CARSON**

This town was established in 1869 as a temporary terminus for the Kansas Pacific Railroad during construction as the railroad built towards Denver.

The historical literature commonly reports that the original site was some three miles west of present day Kit Carson. However, Glenn Scott's *Historic Trail Map of the Lamar Quadrangle* places the site about a half-mile west of the center of the modern town. With considerable respect for Glenn's work, I feel that his location is most likely to be correct. In any event, a move to the present site followed construction when the railroad terminus moved on toward Denver.

The location was a major intersection of stage and wagon roads and cattle trails to Denver, Pueblo and several other settlements in the Arkansas River Valley. It was from Kit Carson that the Arkansas Valley Railroad began. This railroad built to the vicinity of Fort Lyon and was planned to continue on to Pueblo. However, construction of the Atchison, Topeka and Santa Fe Railroad preempted the Arkansas Valley Railroad and it was soon abandoned and dismantled.

Following departure of the railroad construction camp, Kit Carson rapidly declined. However, with its location on the railroad it began to redevelop as a shipping point for cattle and soon acquired a number of businesses to serve the population of the surrounding ranches. In 1889, given the choice of Cheyenne Wells to be the county seat, it seems likely that at the time Kit Carson was not considered to be a significant settlement. Surprisingly Kit Carson was not incorporated as a town until July 13, 1931.

In the middle twentieth century, Kit Carson developed as a highway town serving travelers on US Highways 40 and 287. Motels, cafes and service stations helped to boost the local economy. In the late twentieth century, the completion of Interstate 70 many miles to the north, diverted much of the long distance travel and Kit Carson has slid back to being a small, pleasant town relying more on the local agriculture and on the remaining highway traffic to support its businesses.

The town was named for the western scout, guide, trapper and military commander, Christopher "Kit" Carson.

Kit Carson is situated at the junction of Wild Horse Creek with Big Sandy Creek. It is on the Union Pacific Railroad and US Highways 40 and 287.

Latitude = 38:45:40 North Longitude = 102:47:20 West

**Chronology of the Post Office**

<b>Dec 29 1869</b>	<b>Established</b>	
<b>Dec 29 1869</b>	<b>Howard, Jerome A.</b>	
<b>Jan 30 1870</b> ----	<b>Not surveyed</b>	<b>1/4 mile north of Sand Creek, 1/4 mile south of Wild Horse Creek</b>
<b>Feb 15 1871</b> ----	<b>Not reported</b>	<b>50 miles north of Arkansas River, 1/8 mile north of Sand Creek. 1/16 mile north of the K.P.R.R.</b>
<b>Feb 17 1871</b>	<b>Howard, Jerome A.</b>	<b>P&amp;S</b>
<b>Mar 3 1873</b>	<b>Byrd, David D.</b>	<b>P&amp;S</b>
<b>May 13 1873</b>	<b>Ainslie, Samuel R.</b>	<b>P</b>
<b>Jul 11 1873</b>	<b>Ryus, David D.</b>	
<b>Apr 10 1875</b> ----	<b>NW/4 Sec 5 T47N R4? (????)</b>	<b>60 yards north of the K.P. &amp; U.P. The sketch maps confirms the section but is no help in explaining the township and range.</b>
<b>Apr 19 1875</b>	<b>Shanley, Patrick</b>	
<b>Jul 13 1877</b>	<b>Reilley, Edward D.</b>	
<b>Mar 26 1878</b>	<b>Morrison, Charles M.</b>	
<b>Apr 7 1879</b>	<b>Reilley, Edward D.</b>	
<b>Nov 17 1880</b>	<b>Wallace, John</b>	
<b>May 17 1881</b>	<b>Discontinued</b>	
<b>Feb 14 1882</b>	<b>Re-established</b>	
<b>Feb 14 1882</b>	<b>Smith, William E.</b>	

## KIT CARSON – Continued

Jun 29 1883	Doyle, William L.	
Dec 11 1883	Rork, William G.	
Nov 28 1884	Papelye, Eliza J.	
Jan 23 1885	Woonser, Frank H.	
Jun 22 1887	Patchen, Arthur G.	
Oct 12 1888	Stevens, Sherman C.	
Oct 26 1889	Perry, Steven C.	
May 3 1894	Green, Orlando J.	
Feb 19 1895	Young, Frank E.	
Jun 30 1897	Shaefer, George C.	
Jun 27 1898	Meier, Paul	
Mar 24 1902	Murphy, John C.	
Oct 6 1904	Alfred, Lawrence S.	
Feb 21 1905	Sherman, Stanford G.	
Apr 8 1907	Waggoner, James	
May 25 1908	----	From: NE/4 Sec 8 T15S R48W To: NW/4 Sec 9 T15S R48W A move east about 1900 feet from a previous location Union Pacific track and station 250 feet South of post office
Feb 24 1914	----	NW/4 Sec 9 T15S R48W 256 feet north of Union Pacific tracks
Feb 11 1915	Eubank, M. E.	
Dec 24 1917	Eubank, O. Zella	
Apr 1 1921		Presidential
Apr 7 1922	Baghott, William A.	P&S
Apr 5 1926	Baghott, William A.	P&S
Apr 15 1930	Rhoades, William H. Jr.	P&S
Jun 15 1934	Rhoades, William H. Jr.	Nominated
Jun 18 1934	Rhoades, William H. Jr.	Confirmed
Jul 21 1934	Rhoades, William H. Jr.	Commissioned
Jul 31 1934	Rhoades, William H. Jr.	Assumed charge
Jun 7 1938	Rhoades, William H. Jr.	Nominated
Jun 8 1938	Rhoades, William H. Jr.	Confirmed
Jun 23 1938	Rhoades, William H. Jr.	Appointed Presidential
Aug 8 1938	Rhoades, William H. Jr.	Commissioned
Aug 16 1938	Rhoades, William H. Jr.	Assumed charge
Oct 23 1941	----	NW/4 Sec 9 T15S R48W Union Pacific track and station 470 feet south of Post Office
Oct 15 1942	Rhoades, William H. Jr.	Nominated
Dec 4 1942	Rhoades, William H. Jr.	Confirmed
Dec 7 1942	Rhoades, William H. Jr.	Appointed Presidential
Jan 11 1943	Rhoades, William H. Jr.	Commissioned
Dec 30 1966	Derby, Mary Josephine	Acting
Dec 5 1970	Derby, Mary Josephine	Assumed charge

## Confirmed types of postal markings

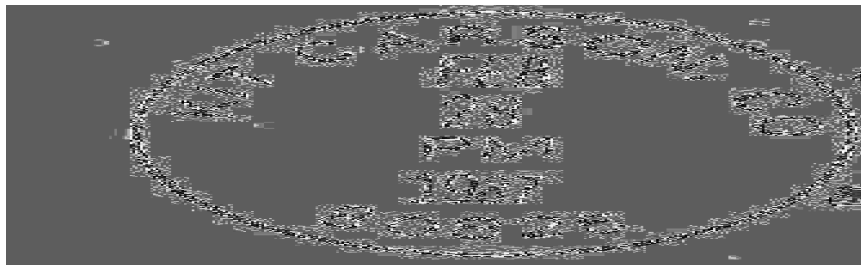
1.A	Kit Carson Col	MS	Mscp Pen cancel	Mar 30 1870 Aug 25 1870
1.B	Kit Carson, Colorado	MS	Mscp Pen cancel	Jun 29 1870
2	KIT CARSON, Colorado	CC	CCard Pen cancel, Corner card and enclosure from Kit Carson [NOT ILLUSTRATED]	Apr 24 1870 Jul 4 1870
3	KIT CARSON / COL.	CI 10P 24.0	Hstp Target, 4-ring 18mm	Apr 24 187- Sep 10 187-
4	KIT CARSON / COLO.	CI 10P 25.0	Hstp Cork, smudge, hobnail grid	Apr 5 1873 Dec 4 1873
5	KIT CARSON, COL. // UNION PACIFIC RY.	OV 00R 33.0x25.0	Hstp No killer	May 5 1884

**KIT CARSON – Continued**

6	KIT CARSON, COL. SL 00R 32.5x15.0	Jan 22 1887 Feb 1 1887 Hstp Pen cancel, probably a railroad ticket dater
7	KIT CARSON, / COLO. CI 10P 27.0	Jun 6 1888 Hstp Target
8	KIT CARSON, / COLO. CI 10P 31.0	Mar 6 1908 ???? Not present, Probably a Doane
9	KIT CARSON, / COLO. CI 10P 31.0	May 5 1910 Jun 9 1911 4bars S-26x13mm
10	KIT CARSON, / COLO. CI 10P 32.0	Dec 28 1912 Jun 19 1918 4bars S-23x19mm
11	KIT CARSON / COLO. CI 10P 29.0	Nov 28 1923 Jan 16 1934 Dplx Grid, 9 bar oval
11.1	KIT CARSON / COLO. RC 10P 35.0x15.0	1930s Hstp No killer, Parcel Post Box
12	KIT CARSON, / COLO. CI 10P 30.0	Aug 15 1935 May 14 1965 Dplx Grid, oval with 1
13	KIT CARSON, CO / 80825 CI 10P 32.0	Mar 22 1968 Oct 25 1978 4bars S-24x20mm
14	KIT CARSON, CO / 80825 CI 10P 31.0	Nov 19 1979 Feb 28 1987 4bars S-??x18mm
15	KIT CARSON, CO 80825 / USPS CI 11P 27.0/18.0	Apr 16 1990 Hstp No killer



**KIT CARSON – Continued**



**KIT CARSON STATIONS**

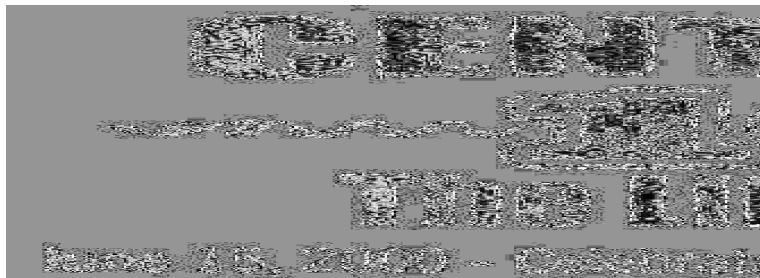
**CELEBRATE THE CENTURY STATION**

**Chronology of the Post Office**

Jun 15 2000      Operated as a special commemorative station

**Confirmed types of postal markings**

1	Kit Carson, CO 80825 // Celebrate the Century Station SL 00R 87.0x3.0	Jun 15 2000 Pict Text only - CENTENARIAN / -- 100 -- / The Life of a Century
---	--------------------------------------------------------------------------	------------------------------------------------------------------------------------



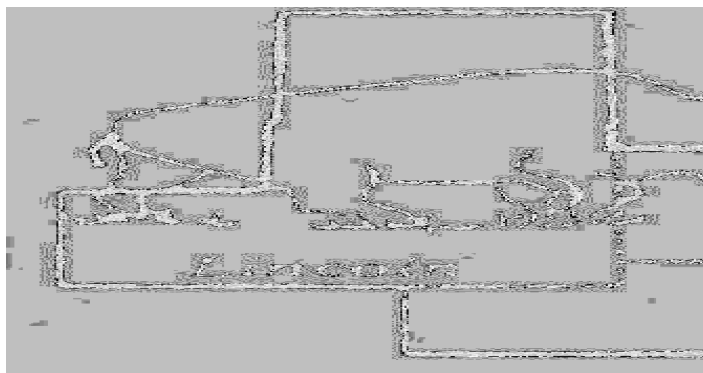
**TRI-COUNTY CENTENNIAL STATION**

**Chronology of the Post Office**

Aug 31 1989      Operated as a special commemorative station  
Sep 2 1989      Operated as a special commemorative station

**Confirmed types of postal markings**

1	KIT CARSON, CO 80825 / USPS :: Tri-County Centennial Station CI 11P 24.0/16.5	Aug 31 1989 Sep 2 1989 Pict Scene - County map, Buffalo; Text - Lincoln / Cheyenne / Kiowa / 1889-1989
---	----------------------------------------------------------------------------------	--------------------------------------------------------------------------------------------------------------



## **MEDILL**

Medill is briefly described as a, “ranch post office.” This is an apt description as it is in an area of wide-open rangeland that in modern times is very sparsely populated. I spent one afternoon driving the back roads of southern Cheyenne and northern Kiowa counties and I did not pass a single ranch that I believed to be occupied year around. Many of the old ranch buildings serve to house equipment and are probably used for a week or two during planting and harvesting.

The name, Medill, was the family name of the first postmaster.

To reach the site of Medill, from Cheyenne Wells drive west 11 miles to Cheyenne County Road 34, at the site of Firstview. Turn south on Road 34 eight and one half miles to Road G, turn west for one-half mile and then, at the continuation of Road 34 turn south for about three and one half miles. At the time of my visit (1996) there were still standing the walls of a roofless building in a group of trees on the west side of the road.

### **Chronology of the Post Office**

Sep 26 1910	---	SE/4 Sec 22 T16S R46W	Big Sandy Creek 4 miles south of office
Dec 1 1910		Established	
Dec 1 1910		Medill, Sarah	
Jul 7 1914		Bateman, Marquis DeL.	
May 15 1920		Discontinued	Mail to Firstview

### **Confirmed types of postal markings**

1 MEDILL / COLO. Sep 22 1911 Sep 29 1916  
CI 10P 31.0 4bars S-25x20mm



## **MOUNT PEARL**

Mount Pearl is another of the three post offices in Cheyenne County that were not along the railroad and US-Highway 40. It was a ranch or rural post office serving an area north of Kit Carson, five miles south of the border with Kit Carson County.

The site is fourteen miles due north of Kit Carson. In 1996 it was still an active ranch on low rise to the west side of the road. To reach the site, drive north fourteen miles on Colorado Highway 59 from US 40 at Kit Carson. The surrounding countryside is devoted to livestock and dry land farming.

Other than the location and description as a ranch post office I found no mention of Mount Pearl in the historical literature.

The Post Office Department Geographical Site Location Report indicates that Grand View may have been the name first requested. From my visit to the site, Grand View would have been an appropriate name. I have no information as to why the final choice was Mount Pearl.

Latitude = 38:57:45 North Longitude = 102:47:20 West

**MOUNT PEARL – Continued****Chronology of the Post Office**

Apr 11 1911 ---- NE/4 Sec 32 T12S R48W

It appears that the original request might have been for Grand View.

Jul 27 1911 Established

Jul 27 1911 Harlow, William B.

Jan 11 1923 Ordered closed

Jan 31 1923 Discontinued Mail to Kit Carson

**Confirmed types of postal markings**

1	MOUNT PEARL, / COLO. CI 10P 32.0	4bars S-24x19mm	Nov 26 1913 May 15 1914
2	MOUNT PEARL, / COLO. CI 10P 32.0	4bars S-24x??mm	Nov 21 1921

**PILOT**

The only references to this post office that I have found are in Post Office Department records and a spotted location on the *Historic Trail Map of the Lamar Quadrangle*. The location on that map agrees with the one given below.

A visit to the site in October 1996 found only some fragmentary ruins of a building on the east side of Cheyenne County Road 3, on the south side of Rush Creek. The countryside is wide-open range.

From US Highway 40, turn west on Colorado Highway 94. At this point 94 first runs southwest for about two miles then turns due west. At that point a county road goes back to the east for a mile and intersects County Road 1. County Road 1 may also intersect Highway 94 at the railroad crossing. Turn south on County Road 1, which quickly angles southeast to become County Road 2. At eight miles to the south, the road drifts to the east and after another three miles, at Rush Creek you should be on County Road 3 and at the site of Pilot as soon as you cross over Rush Creek. In any event, once you leave Highway 94 there is little choice but to go south, for verification the location is four miles north of the county line.

**Chronology of the Post Office**

Aug 21 1899 ---- SW/4 Sec 10 T16S R51W 1/4 mile south of Rush Creek

Proposed postmaster - John S. Sanford

Sep 11 1899 Established

Sep 11 1899 Sanford, John S.

Dec 9 1899 Order rescinded

Dec 12 1899 Discontinued

Jan 22 1900 Re-established

Jan 22 1900 Sanford, John S.

Apr 20 1903 Ordered closed

Apr 30 1903 Discontinued Papers to Aroya

**PILOT – Continued**

**Confirmed types of postal markings**

**NO POSTAL MARKINGS HAVE BEEN REPORTED FROM PILOT**

**SORRENTO**

Sorrento was a small town on the Union Pacific Railroad. Eventually it had a few homes, a grocery store, hardware and lumber yard, a small schoolhouse and of course the post office. There was a siding for loading livestock. By 2003 very little remained at Sorrento. The siding is still there and there is a grain storage facility at the railroad on the south side of US Highway 40. On the north side of the highway there is a large Quonset style building and a couple of smaller structures. The location is at the intersection of US Highway 40 and Cheyenne County Road 14, six miles west of Kit Carson.

I have found no information as to why the name Sorrento was chosen for this settlement.

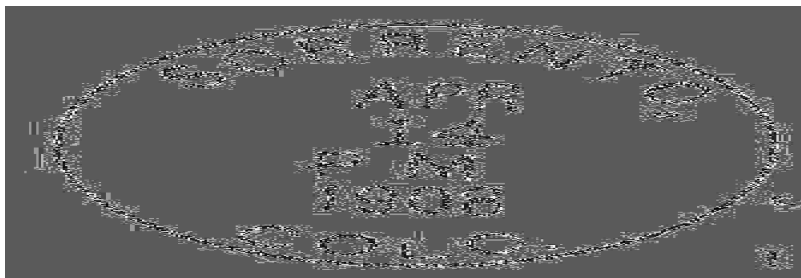
Latitude = 38:46:50 North Longitude = 102:54:20 West

**Chronology of the Post Office**

<b>Jun 24 1907</b>	<b>----</b>	<b>SW/4 Sec 33 T14S R49W Big Sandy Creek 1 mile south of Post Office. Union Pacific, 40 rods south of office.</b>	
<b>Jul 29 1907</b>		<b>Established</b>	
<b>Jul 29 1907</b>		<b>Elliot, Ernest G.</b>	
<b>Nov 18 1908</b>		<b>Jarhens, Dena</b>	
<b>Apr 24 1912</b>		<b>Waters, Dena J.</b>	<b>Name changed by marriage</b>
<b>Jul 2 1914</b>		<b>Thorsness, Oliver</b>	
<b>May 17 1916</b>		<b>Jones, John W.</b>	
<b>Dec 8 1916</b>		<b>Carlton, Eugene S.</b>	
<b>Jan 22 1917</b>		<b>Hankins, Elsie</b>	
<b>Feb 14 1918</b>		<b>Discontinued Mail to Kit Carson</b>	

**Confirmed types of postal markings**

<b>1</b>	<b>SORRENTO, / COLO.</b>		<b>Apr 14 1908</b>	<b>May 30 1914</b>
	<b>CI 10P 31.0</b>	<b>4bars S-24x13mm</b>		
<b>2</b>	<b>SORRENTO, / COLO.</b>		<b>Feb 12 1915</b>	<b>Aug 11 1916</b>
	<b>CI 10P 31.5</b>	<b>4bars S-??x19mm</b>		



**WILD HORSE**

Wild Horse is the smallest of the four remaining communities in Cheyenne County. It does still have a post office that is the most convenient for a large area of western Cheyenne County and eastern Lincoln County.

The legend is that surveyors for the Kansas Pacific Railroad, accompanied by a small detachment of U. S. Cavalry encountered a large herd of wild horses watering from a stream some twelve miles west of Kit Carson. They named the creek for the horses and when the railroad established a station nearby it too was named Wild Horse.

**WILD HORSE – Continued**

Briefly in early 1877 there was a post office at the Wild Horse Station, but it closed and for nearly 30 years mail came to the area by way of the post office at Arena, seven miles to the west.

In 1905 Fred Goddier purchased land from the state and in early 1906, assisted by Adolph Froelich, county surveyor, he laid out a town site and a new Wild Horse was on the map. These dates are from a personal recollection by the son of Fred Goddier as reported in the book by Marion Hope Hogan and others. They do not quite agree with the dates given in the Post Office Department Records of Postmaster Appointments.

As late as 2003 there are still a few residences at Wild Horse. The post office is open on a limited schedule and the old schoolhouse is in good repair and used as a community center. The only business in the town seems to be a flea market.

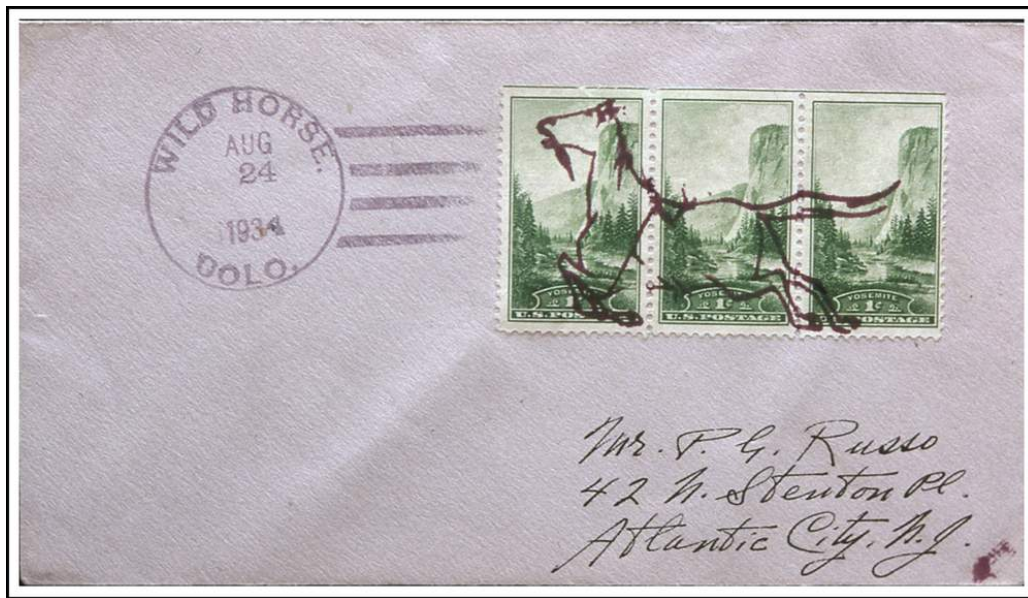
The location is on the north side of US Highway 40, twelve miles west of Kit Carson at the intersection of US 40 with Cheyenne County Road 8.

Latitude = 38:49:33 North Longitude = 103:00:40 West

**Chronology of the Post Office**

Jan 5 1877	Established	
Jan 5 1877	McManus, M. J.	
May 25 1877	Discontinued	
Mar 21 1904	----	SW/4 Sec 16 T14S R50W 1/2 mile north of Big Sandy Creek. 60 feet north of the Union Pacific Railroad Proposed postmaster - Frederick Goddier[Goodier?]
Apr 13 1904	Re-established	
Apr 13 1904	Goddier [Goodier?], Frederick	
Feb 5 1909	----	From: NW/4 Sec 21 T14S R50W To: SE/4 Sec 16 T14S R50W A move north 1816 feet from a previous location Big sandy 2443 feet south of post office. Union Pacific 250 feet south
Feb 17 1909	Carlson, Oscar W.	
May 11 1911	Edlund, Olaf A.	
Mar 5 1914	----	SW/4 Sec 16 T14S R50W 225 feet north of the Union Pacific, 100 rods north of the Big Sandy Creek
Dec 26 1914	McNevin, Thomas J.	
Aug 10 1917	Woodworth, Maurice E.	
Jul 25 1919	Davis, E. Ruth	
Aug 14 1920	Nelson, Frances	
Apr 4 1921	----	SE/4 Sec 16 T14S R50W 1/2 mile south of Big Sandy Creek, 275 feet north of U.P.
Aug 11 1922	Nelson, Thomas H.	
Jul 24 1924	George, Ida M.	Acting
Nov 24 1924	Hammond, Eva E.	Appointed
Dec 12 1924	Hammond, Eva E.	Commissioned
Dec 21 1924	Hammond, Eva E.	Possession
Jan 10 1937	Holt, Judith A.	Possession
Jan 21 1937	Holt, Judith A.	Appointed
May 18 1937	Holt, Judith A.	Appointed
Jun 4 1937	Holt, Judith A.	Commissioned
Jun 8 1937	Holt, Judith A.	Possession
Oct 20 1941	----	Center of S/2 Sec 16 T14S R50W US-40 60 feet north of office, Wild Horse station of Union Pacific 4/10 mile southwest.
Oct 10 1975	Larsen, Gladys M.	Officer in charge
Sep 25 1976	Schallenberger, Yvonne E.	Officer in charge
Jan 20 1977	Larsen, Ms. Gladys M.	Officer in charge

**WILD HORSE – Continued**



**WILD HORSE. / COLO. August 24, 1934 With fancy running horse cancel**



**Post Office – Wild Horse, Colorado**

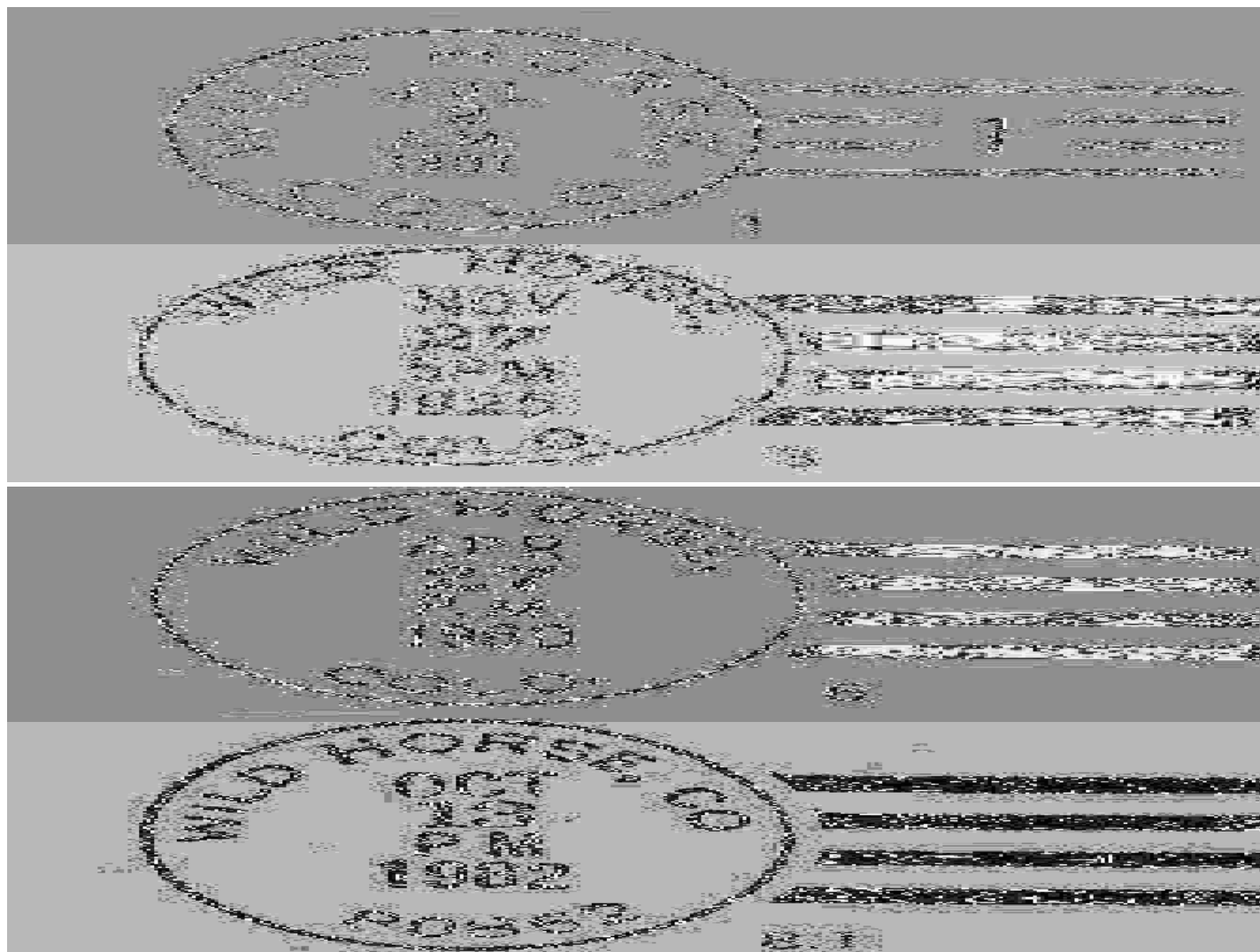
**Photograph by James L. Ozment**

**February 13, 1993**

**WILD HORSE – Continued**

**Confirmed types of postal markings**

1	WILD HORSE, / COLO. CI 10P 28.0	Doane Type 2 with 1, S-24x13mm	Jul 2 1907	Feb 13 1909
2	WILD HORSE, / COLO. CI 10P 32.0	4bars S-25x13mm	Jun 17 1909	Aug 22 1912
2.1	WILD HORSE, / COLO. CI 10P 32.0	4bars S-??x19mm	Oct 30 1911	Dec 21 1918
3	WILD HORSE, / COLO. CI 10P 32.0	4bars S-24x18mm	Jul 13 1925	Dec 29 1926
4	WILD HORSE / COLO. CI 10P 32.0	4bars S-24x18mm	Oct 27 1924	Mar 27 1938
5	WILD HORSE / COLO. CI 10P 33.0	4bars S-23x18mm	Jul 22 1940	Oct 21 1959
6	WILD HORSE, / COLO. CI 10P 31.5	4bars S-23x18mm	Feb 16 1947	Jan 18 1965
7	WILD HORSE / COLO. CI 10P 31.0	4bars S-23x18mm	Oct 17 1962	Jan 13 1964
8	WILD HORSE, CO / 80862 CI 10P 32.0	4bars S-24x19mm	Jul 29 1968	Oct 10 1978
8.1	WILD HORSE, CO / 80862 CI 10P 33.0	4bars S-25x19mm	Oct 13 1982	
9	WILD HORSE, CO / 80862 CI 10P 31.0	4bars S-25x19mm	Feb 9 1989	Dec 9 1991





**BIBLIOGRAPHY – CHEYENNE COUNTY****REFERENCES – BOOKS**

- BENSON, Maxine *1001 Colorado Place Names*; 1994; University Press of Kansas; Lawrence, Kansas; 237pp; sketches
- CROFUTT, George A. *Crofutt's Gripsack Guide of Colorado*, 1885; Overland Publishing Co; Omaha, Nebraska; Reprint: Cubar Associates; 1966; Golden, Colorado; 266pp; illus.; maps
- DAWSON, J. Frank *Place Names in Colorado*; 1954; J. Frank Dawson Publishing Co.; Denver, Colorado; 52pp
- EBERHART, Perry *Ghosts of the Colorado Plains*; 1986; Swallow Press; Athens, Ohio; 253pp; illus.; maps
- HOGAN, Marion Hope and Contributors *Kit Carson, Colorado*; 1974; Kit Carson Historical Society; 90 pp; illus.; map
- LONG, Margaret *The Smoky Hill Trail*; 1943; W.H. Kistler Stationery Co.; Denver; 336pp
- SHAFFER, Ray *A Guide to Places on the Colorado Prairie 1540-1975*; 1978; Pruett Publishing Co.; Boulder Colorado; 386pp; illus.; maps

**REFERENCES – COLORADO MAGAZINE**

- LONG, Margaret M.D. *The Smoky Hill Trail*; November 1932, Vol. 9, No. 6, pp 218-231  
*Place Names in Colorado* [Alternate Title: *The Names of Colorado Towns*]  
Prepared by the Colorado Writers Project; *Colorado Magazine*; Serialized in Volumes 17-20

**REFERENCES – MAPS**

- SCOTT, Glen R. *Historic Trail Map of the Lamar 1° x 2° Quadrangle, Colorado and Kansas*; 1995; U. S. Geological Survey; Map with brief text

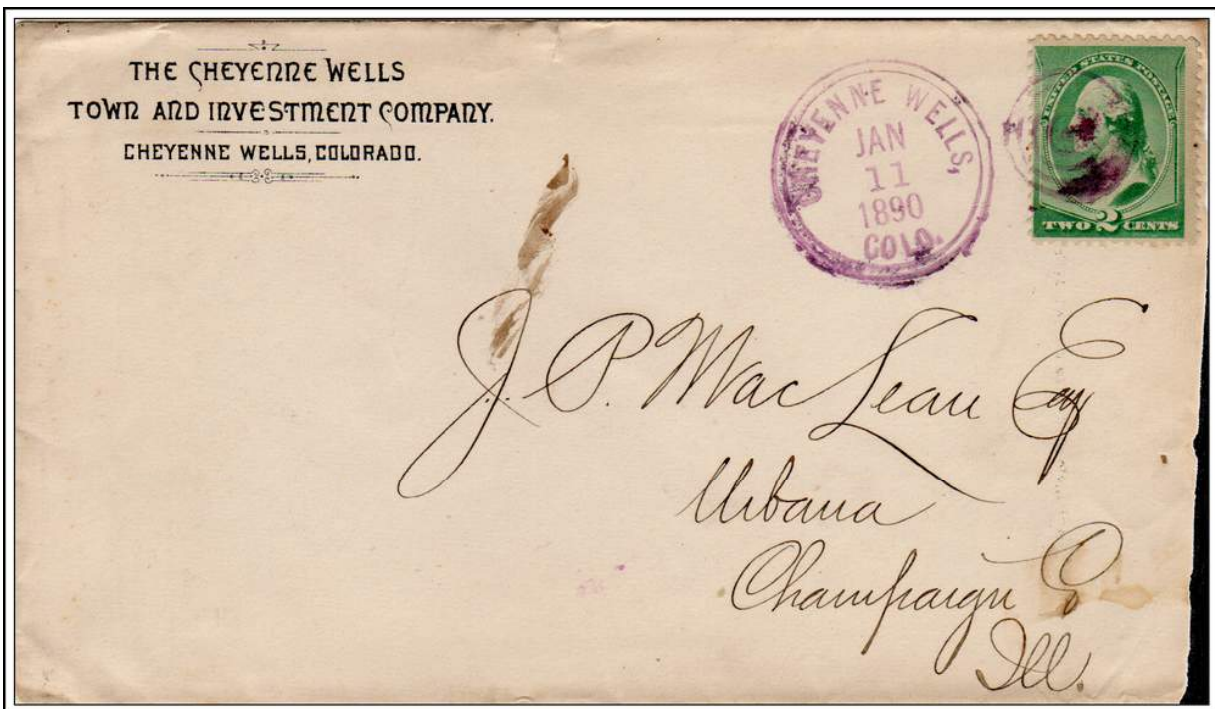
**GEOGRAPHIC SITE LOCATION REPORTS OF THE POST OFFICE DEPARTMENT**

These are documents filed with applications for the approval of a new post office, at the time of a move of a post office and upon periodic requests of the Post Office Department. The documents may include a detailed location using the Federal Land Survey System, reference of distance to local streams and rivers, to railroads and to nearby existing post offices.

A COVER GALLERY OF CHEYENNE COUNTY



CHEYENNE WELLS / COLO. January 12, 1886

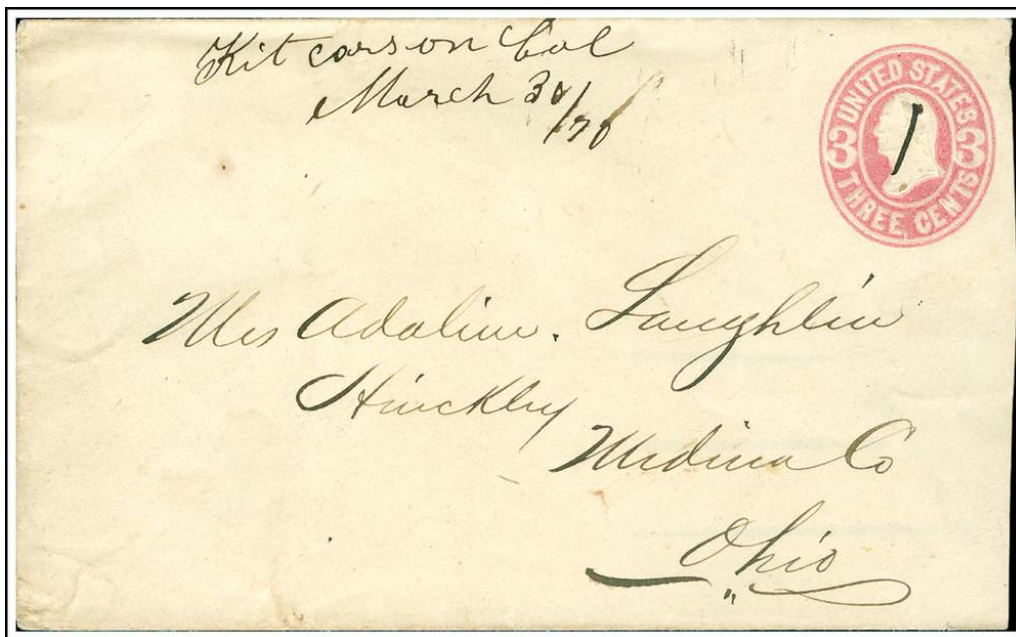


CHEYENNE WELLS, / COLO. January 11, 1890



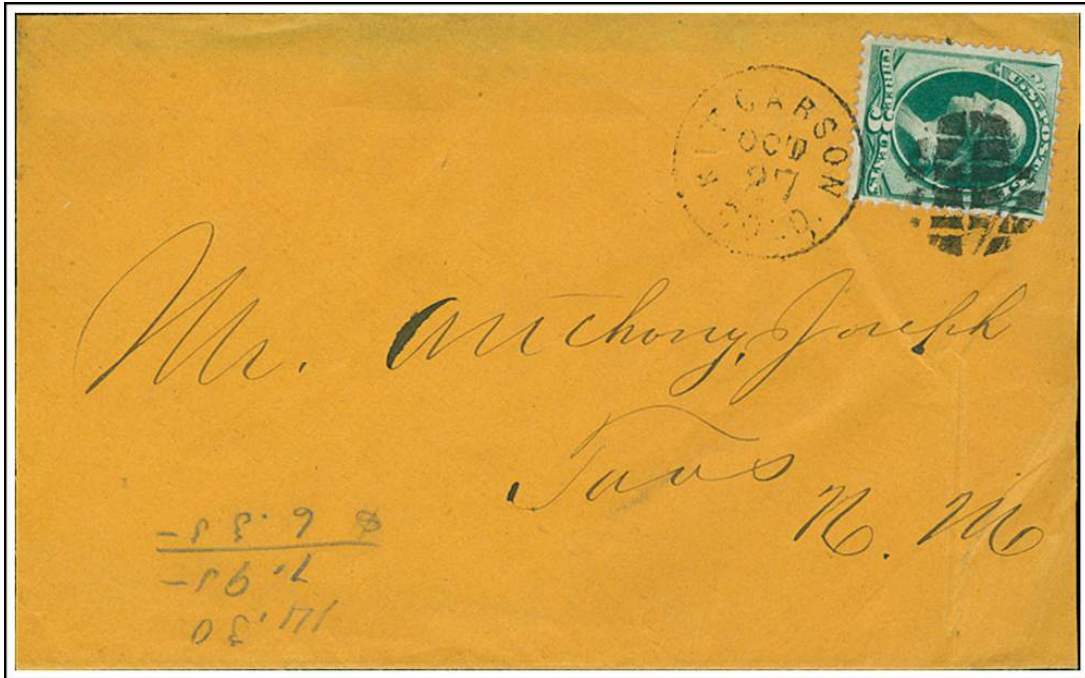
CHEYENNE WELLS / COLO.

August 25, 1954



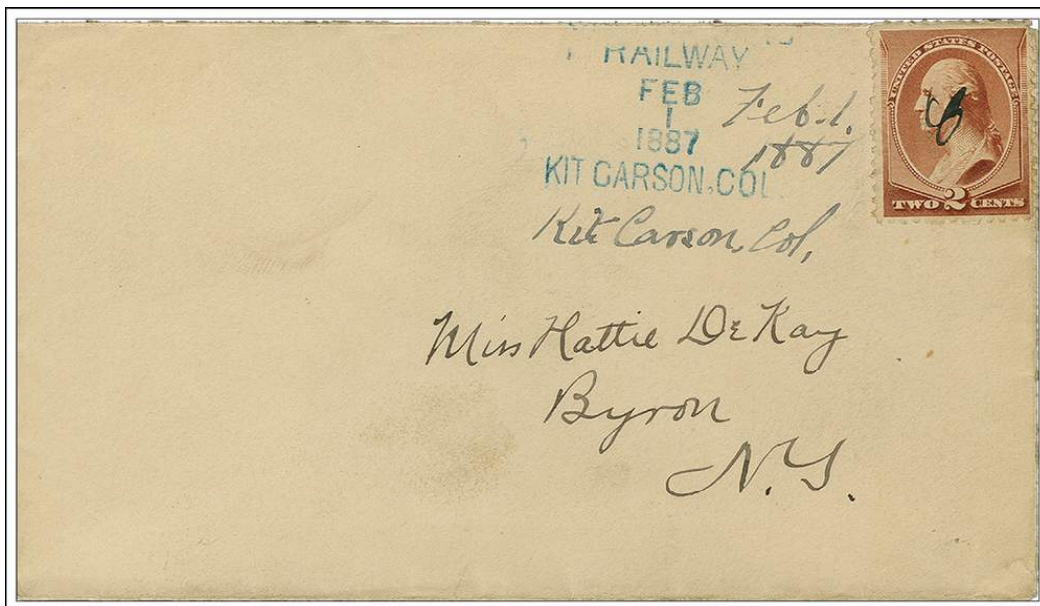
Kit Carson Col

March 30, 1870

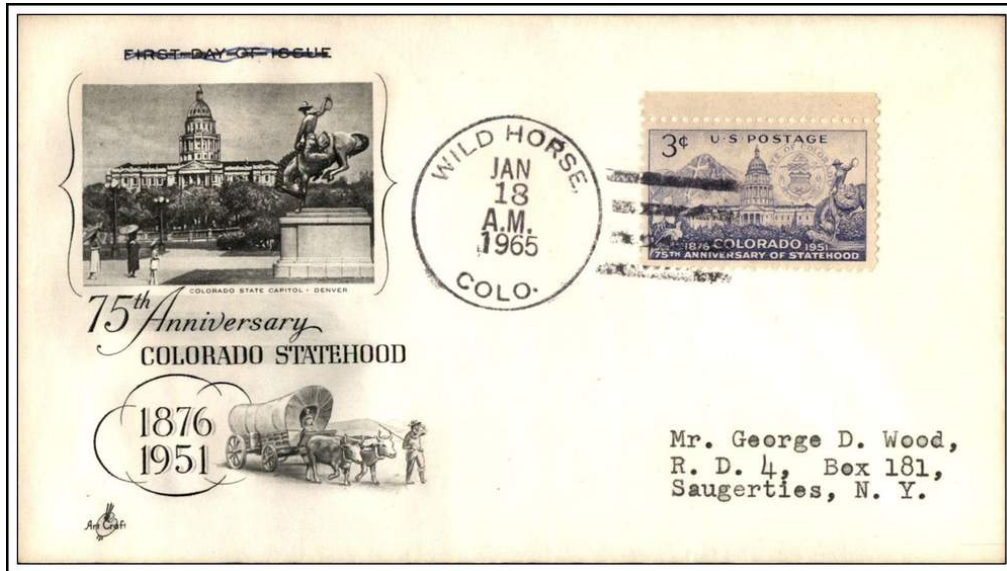


KIT CARSON / COLO.

October 27



KIT CARSON, COL // --- / RAILWAY February 1, 1887  
Cancelled by a railroad ticket dater



WILD HORSE, / COLO.

January 18, 1965