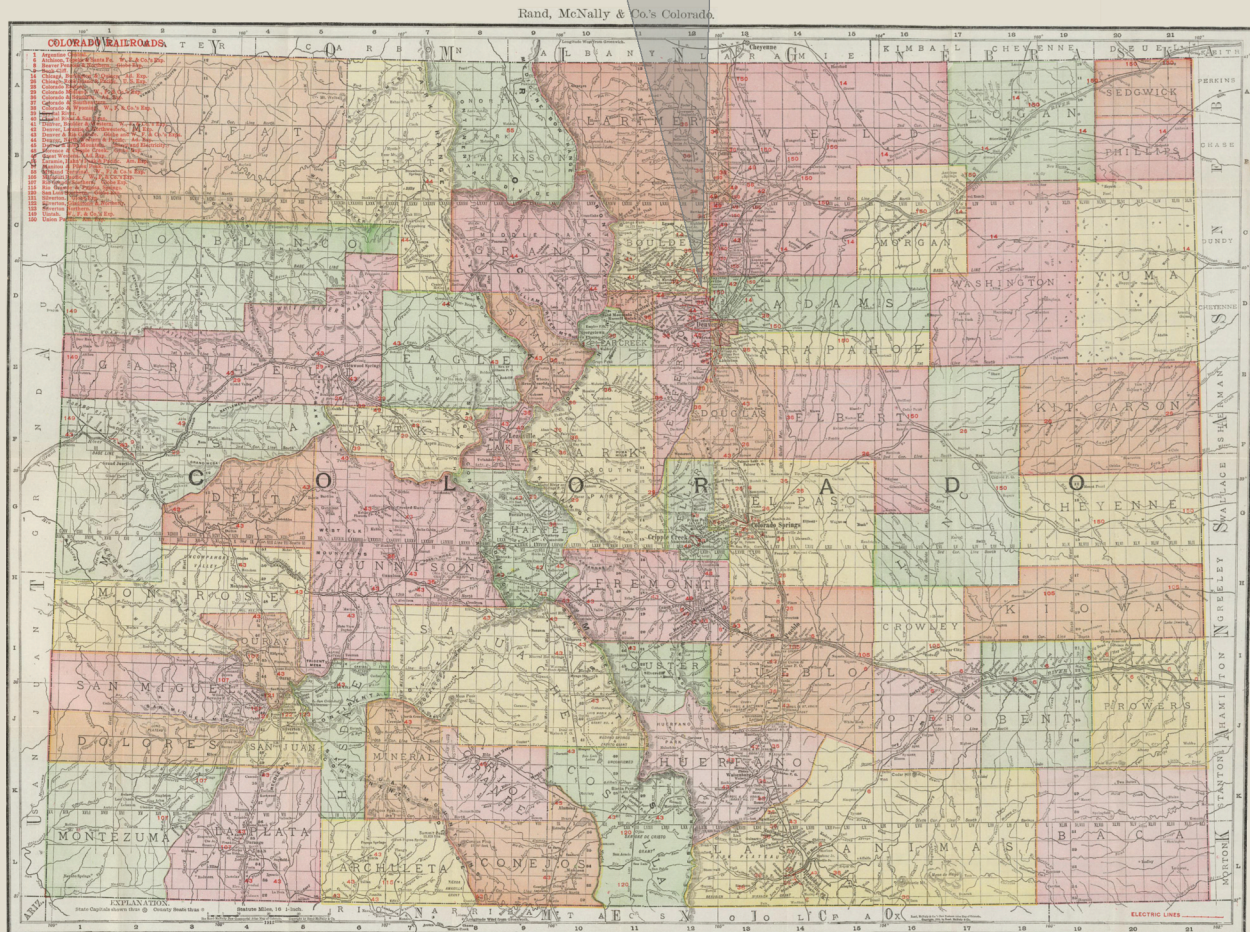


Broomfield County



Map courtesy of <http://www.davidrumsey.com>

Established: November 15, 2001

County Seat: Broomfield

BROOMFIELD COUNTY

By William H. Bauer

By the mid-1990's it had become obvious to many residents of the city of Broomfield that major changes were needed. Since the 1954 completion of the Denver-Boulder Turnpike, Broomfield had expanded rapidly from a small rural community to city with a population of over 30,000.

The location of Broomfield, in the area where Jefferson, Boulder, Weld, and Adams Counties meet, had created an increasingly complex administrative and financial situation. There was no cohesive system for county services. Each county was different and when a problem arose there was frequently a question as to which county should assume responsibility.

About 1995 the idea of forming a new county was broached. Three years of study and negotiation resulted in the 1998 authorization of a new county — Broomfield County. It would take another three years and expenditure of \$41,100,000 before Broomfield County became a reality on November 15, 2001. A new public library and an expanded justice system added to the cost of the new county.

The bulk of the new county lies to the west of Interstate 25, however a small portion lies east of I-25, in what was Weld County. The county boundaries are quite irregular and were to a large extent shaped by the boundaries of adjoining municipalities. Only a small portion of the county is not within the boundaries of the City of Broomfield.

Broomfield is the second Colorado county, joining Denver, to have a joint city and county administration.

When the City and County of Denver were created a number of formerly independent towns were amalgamated with Denver. Thus the present boundaries of Denver include a number of former independent post offices. If I have correctly interpreted the map of Broomfield County, Broomfield is the only post office that exists, or did exist, within the new county.

The following is an updated version of the Broomfield text and listings that were originally published as a part of the Boulder County section. [*Colorado Postal Historian* Volume 17, Number 1, pages 39-43]

In addition, I have appended two articles that are germane to the history of the Broomfield Post Office.

BROOMFIELD

The first records of settlement in what is today Broomfield trace back to Henry and Sarah Church who, in 1864, began ranching in the vicinity of today's 104th Avenue and Old Wadsworth Avenue.

The community began as a station on the Denver, Utah & Pacific Railroad (later a part of the Burlington Railroad system) called "Zang's Spur," for Philip Zang, a Denver businessman and brewer. The early Colorado Central Railroad also passed near the eventual site of Broomfield. When the post office was established in 1884 it adopted the name "Broomfield" supposedly for a field of broom corn growing nearby. The choice of the name is attributed to a man named Putnam.

It was not until August 21, 1923 that a town plat for Broomfield was filed by the Adolph J. Zang Investment Company. Broomfield remained a small, largely agricultural community until after World War II.

Since the 1950's Broomfield has participated in the rapid growth of the Denver Metropolitan Area and has become one of Denver's major suburban communities. It has also become home to light industry and many retail businesses. The 1954 completion of the Denver-Boulder Turnpike was an impetus to the growth of Broomfield. A year later construction began on the town's first subdivision – Broomfield Heights.

BROOMFIELD - Continued

Growth of Broomfield was rapid and it spread out into portions of Jefferson, Boulder, Weld and Adams Counties. Broomfield was overshadowed by the city of Boulder, and was looked down upon as just another example of urban sprawl in the expanding Denver Metropolitan Area.

In spite of that perception Broomfield did manage to retain a pleasant aspect with considerable focus on maintaining considerable green space within its boundaries.

Although Broomfield is home to one of the largest shopping centers in the area, it lacks a true central business district. A new public library was a part of the changes that resulted from the formation of Broomfield County. The city has plans to develop the area around the library as a modest and attractive commercial center.



Broomfield Post Office
Photograph by Jim Ozment

*POST OFFICE ROBBED
ESCAPE BY HORSE AND BUGGY*

11/22/1909 - Broomfield, Colo. Nov. 22 - Two masked men blew open the safe in the Broomfield post office with nitroglycerine early this morning, and stole a horse and buggy and made their escape in the direction of Brighton with booty variously estimated at from \$300 to \$2,000.

The robbery was one of the most daring and coolly executed in the history of the state. The robbers evidently began work soon after midnight taking their time in blowing the safe. They gained entrance through a rear window in the wareroom, forcing the sash with a jimmy. Then they drilled a hole in the door of the heavy vault, piled the safe with heavy sacks and balls of twine to deaden the force of the explosion. A fuse was used and the drill hole filled with nitroglycerine. The fuse was lit and set off while the robbers repaired to a safe distance. The door of the safe was blown off by the explosion and the vault wrecked. The

BROOMFIELD – Continued

robbers then helped themselves to cash, stamps, registered letters, and other valuables within the safe. Altogether they took away about \$300 in post office funds more than a dozen registered letters and several hundred dollars worth of stamps. They also took away the pocketbook of E. J. Jones, postmaster and owner of the general store in which the post office was located.

It is not known how much the booty belonging to Mr. Jones amounted to. The trail of the robbers was followed by a posse by means of the stamps and papers, which were thrown away by the robbers. Five or six miles east of Broomfield the men evidently rested. Here were found a number of registered letters rifled of their contents and also about \$30 worth of 2 cent stamps. The wallet belonging to Mr. Jones was also discovered here with the papers, which were considered valueless.

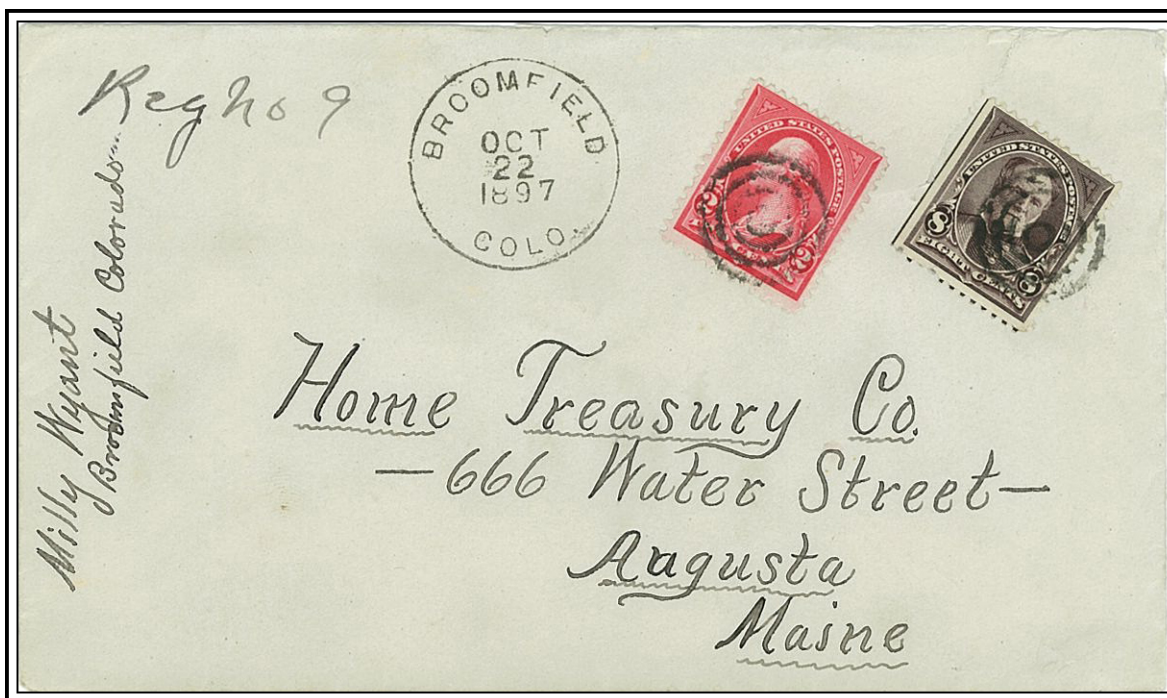
The Boulder Camera

Reprinted in the *Colorado Prospector* Volume 7, Number 4, page 4

Chronology of the Post Office

Sep 26 1884	Established	
Sep 26 1884	Coulson, Druella	
Sep 26 1884	Coulson, Druella	
Jul 10 1886	Craine, Lewis E.	
Jul 24 1889	Graves, Edward O.	
May 23 1894	Harrell, Charles W.	
Nov 6 1894 ---	SW/4 SW/4 Sec 35 T1S R69W	West side, 75 yards from track
Aug 5 1895	Graves, Minnie R.	
Dec 21 1896	Crawford, Harry	
Mar 30 1898	Graves, Florence A.	
Sep 14 1901	Jones, Edgar J.	
Feb 22 1914 ---	SW/4 Sec 35 T1S R69W	
Feb 1 1940	McCrea, Francis W.	Assumed charge
Feb 19 1940	McCrea, Francis W.	Acting
Mar 12 1940 ---	Main Street SW/4 Sec 35 T1S R69W	150 yards southwest of Railroad station, 70 yards west of tracks
Nov 13 1940	Newton, Lester	Confirmed
Nov 27 1940	Newton, Lester	Commissioned
Dec 1 1940	Newton, Lester	Assumed charge
Oct 21 1941 ---	SW/4 Sec 36 T1S R69W	145 feet southeast of the Colorado & Southern Station
Jul 1 1943		Presidential
Oct 31 1943	Matthews, Mary	Acting
Nov 1 1943	Matthews, Mary	Assumed charge
Aug 15 1944	Crawford, Miles	Nominated
Aug 24 1944	Crawford, Miles	Confirmed
Aug 25 1944	Crawford, Miles	Appointed Presidential & Commissioned
Nov 30 1944	Crawford, Miles	Assumed charge
Dec 30 1965	Lis, Joseph J.	Acting
Oct 17 1966	Lis, Joseph J.	Nominated & Confirmed
Nov 15 1966	Lis, Joseph J.	Appointed Presidential
Nov 14 1966	Lis, Joseph J.	Commissioned
Dec 31 1972	Dieringer, Edward J.	Officer in charge
Aug 12 1973	Mason, William F.	Appointed
May 23 1975	Camilli, Francis B.	Officer in Charge
Aug 30 1975	Duenwald, Royal A.	Appointed

BROOMFIELD - Continued



BROOMFIELD / COLO.

October 22, 1897

Confirmed types of postal markings

1	BROOMFIELD / COLO. CI 10P ???	Hstp Not recorded	Mar 6 1890
2	BROOMFIELD / COLO. CI 10P 28.0	Hstp Not present	May ? 1891 Jan 9 1895
3	BROOMFIELD / COLO. CI 10P 27.5	Hstp Target, 4 ring	Jun 8 1898 Aug 13 1900
4.1	BROOMFIELD, / COLO. // R. F. D. SL 00R 27.0x15.0	RFD 5 bars with 1	Oct 10 1900 Nov 6 1902
4.2	BROOMFIELD, / COLO. // R. F. D. SL 00R 25.0x16.0	RFD 5 bars with 2	Feb 2 1901 Jun 14 1904
5	Type 5 has been combined with type 6		
6	BROOMFIELD / COLO. CI 10P 30.0	Dplx Grid, 9 bar oval	Apr 15 1909 Oct 25 1946
7	BROOMFIELD / COLO. CI 10P 30.0	Dplx Grid, Diamond with 1	Oct 8 1949 Mar 22 1957
7.1	BROOMFIELD, / COLO. RC 10P 35.0x17.0	Hstp No killer, Parcel Post Box	1950s
8	BROOMFIELD / COLO. CI 10P 20.0	Mach 6 wavy lines	Apr 14 1962 Dec 31 1965
9	BROOMFIELD CO / 80020 CI 10P 33.0	4bars S-25x19mm	Oct 27 1966 Dec 13 1975
10	BROOMFIELD, CO / 80020 CI 10P 20.0	Mach 6 wavy lines	Feb 25 1966 May 18 1974
11	BROOMFIELD, CO / 80020 CI 10P 33.0	4bars S-24x20mm	Nov 16 1967 Dec 30 1977
12	BROOMFIELD, CO / USPO CI 11P 29.0/19.0	Hstp No killer	Feb 16 1979 Jun 3 1991

**THE COLORADO POSTAL ENCYCLOPEDIA
BROOMFIELD COUNTY**

BROOMFIELD - Continued

- | | | | |
|------|----------------------------|-----------------|-------------|
| 12.1 | BROOMFIELD, CO / 80020 | | Oct 15 1992 |
| | CI 10P 32.0 | 4bars S-24x19mm | |
| 13 | BROOMFIELD, CO / USPO | | Apr 14 1993 |
| | CI 11P 29.0/19.0 | Hstp No killer | |
| 14 | BROOMFIELD CO 80020 / USPS | | Sep 10 1998 |
| | CI 11P 29.0/20.0 | Hstp No Killer | |



1



2



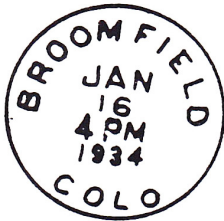
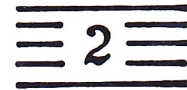
3



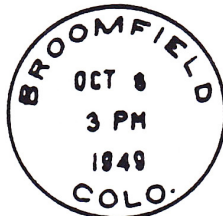
4.1



4.2



6



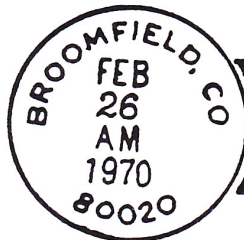
7



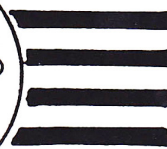
7.1



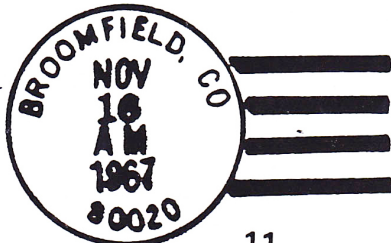
8



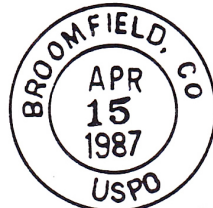
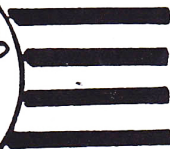
9



10



11



12



12.1



13



14

BROOMFIELD STATIONS

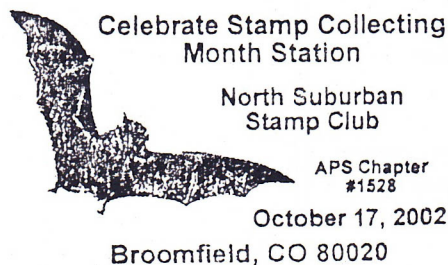
CELEBRATE STAMP COLLECTING MONTH STATION

Chronology of the Post Office

Oct 17 2002 Operated as a Special Commemorative Station

Confirmed types of postal markings

- | | | |
|---|--|---|
| 1 | Broomfield, CO 80020 // Celebrate Stamp Collecting / Month Station
IR 00R 56.0x34.0 | Oct 17, 2002
Pict Scene - Bat in flight; Text - North Suburban / Stamp Club /
APS Chapter / #1528 |
|---|--|---|



1

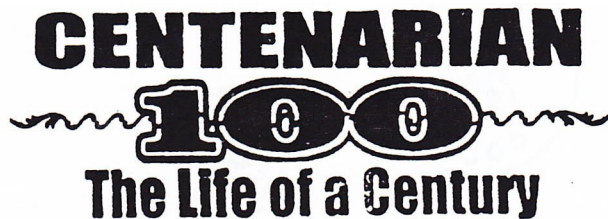
CELEBRATE THE CENTURY STATION

Chronology of the Post Office

Jun 15 2000 Operated as a Special Commemorative Station

Confirmed types of postal markings

- | | | |
|---|--|--|
| 1 | Broomfield, CO 80020 // Celebrate the Century Station
SL 00R 98.0x3.0 | Jun 15 2000
Pict Text only - CENTENARIAN / -- 100 -- /
The Life of a Century |
|---|--|--|



June 15, 2000 - Celebrate the Century Station Broomfield, CO 80020

1

EAGLE VIEW STATION

Chronology of the Post Office

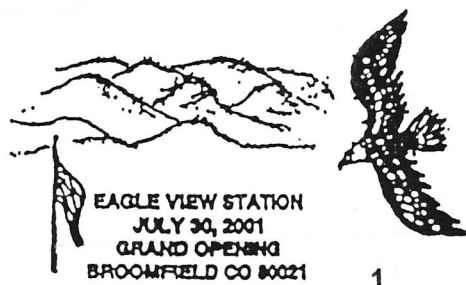
Jul 30 2001 Established as a Station of Broomfield

Confirmed types of postal markings

- | | | |
|---|---|--|
| 1 | BROOMFIELD CO 80021 // EAGLE VIEW STATION
IR 00R 61.0x36.0 | Jul 30 2001
Pict Flag, mountains, eagle in flight; Text - GRAND OPENING |
| 2 | EAGLE VIEW STA CO 80021 / USPS
CI 11P 30.0/20.5 | Jul 30 2001
Hstp No killer |

**THE COLORADO POSTAL ENCYCLOPEDIA
BROOMFIELD COUNTY**

**BROOMFIELD STATIONS - Continued
EAGLE VIEW STATION - Continued**



1



2

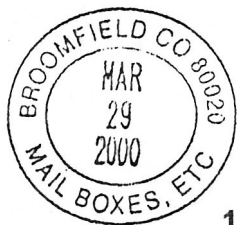
MAIL BOXES, ETC.

Chronology of the Post Office

Mar 29 2000 Established as a Contract Station of Broomfield

Confirmed types of postal markings

1 BROOMFIELD, CO / 80020 / MAIL BOXES, ETC. Mar 29 2000
CI 11P 28.5/18.0 Hstp No killer



1

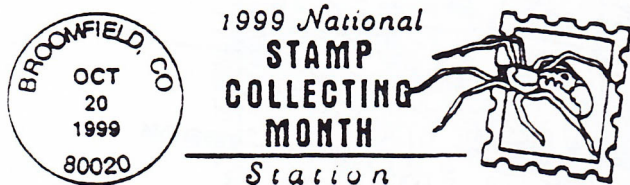
1999 NATIONAL STAMP COLLECTING MONTH STATION

Chronology of the Post Office

Oct 20 1999 Operated as a Special Commemorative Station

Confirmed types of postal markings

1 BROOMFIELD, CO / 80020 :: 1999 National STAMP COLLECTING MONTH Oct 20 1999
CI 10P 22.0 Pict Scene - Spider and stamp outline
Text - 1999 National / STAMP / COLLECTING /
MONTH / Station



1

BROOMFIELD POSTAL HISTORY

Historical research by Miles Crawford, postmaster, 1944-1965

Our first post office was established 111 years ago on September 26, 1884, along a now abandoned railroad line not far from our present location. One legend has it that railroad officials stopping here saw a crop of broom corn growing in a field and gave the place "Broomfield" as a name.

Much of the immediate area was owned by the Philip Zang Brewing Company. He lived in Denver but spent his summers overseeing his farmlands and breeding horses in the Broomfield area. Upon his death, some land was given for community use with the remainder divided into tenant farms.

During this time of Broomfield's beginnings, the local businesses included two grocery stores, a blacksmith shop, a grain elevator and an alfalfa mill which ground meal and shipped by railcar. The railroads played an important role in forming Broomfield, as many different rail lines passed through here bringing people and goods in and taking local products out to the rest of the fast-growing state. One of these rail lines ran trains between Denver, Erie, and Lyons. It hauled coal from Erie to Denver and to its surrounding areas, and also carried flagstone from Lyons to be used in Denver for building. Some lines also passed through here connecting Boulder and Golden, and eventually electric rail service every hour between Boulder and Denver became the "only way to go." Also rail provided the primary transportation for the mail until 1951, when trucking began a new era.

In the early days of our post office, mail service was limited to lock boxes (post office boxes) and call boxes (glass covered boxes with assigned patrons -- when a patron saw mail in his box, he would "call" for it). A charge of \$0.10 for three months was the standard for boxes.

The main event that established the Broomfield Post Office as a central core for mail service was to come from the efforts of the local Crescent Grange organization, which petitioned postal officials to establish "Rural Free Delivery" (RFD). The Grange's work was completed in August, 1900, with two rural routes authorized with a budget of \$500 each including horse hires. The ability of the Grange to influence postal officials to commit this much money to Broomfield was Herculean since this office had only sold \$18.88 worth of stamps during December just three years prior, and spoke loudly of the Grange's belief in the future of Broomfield.

The early rural routes served at least three local coal mines: the Monarch, the Highway, and the Lily. The oldest mine, the Monarch, had a grocery, school, and some permanent residential housing. One of the rural carriers would take the Erie train to the mining community and pass out the mail inside the grocery store. He would also sell stamps and money orders. With his task completed, the carrier would then move to the mine office, convert the day's cash receipts into money orders and return to the post office.

City delivery began in 1958 with three routes in addition to the two existing rural routes. By the year 1969 there were 416 post office boxes and five city routes with 2,549 daily deliveries. Today we serve the Broomfield community with 1500 post office boxes, 48 city routes with 20,159 daily deliveries, and 8 rural routes with 3349 daily deliveries. We operate seven days a week, including Sunday with Express Mail and Special Delivery services only.

LOCATIONS OF BROOMFIELD POST OFFICES

The first community started approximately one mile east and one-quarter mile north of “Old Broomfield” on the tracks of the Denver, Utah & Pacific narrow gauge railroad. Later, a standard gauge railroad was built in its current location. Broomfield started as Zang’s Spur, named after Joseph Zang, son of Denver brewer Philip. Zang’s ranch was a large ranch where currently First Filing neighborhood is located (roughly bounded by Highway 287 on the west and south, 10th Avenue on the north, and Main Street on the east). Zang’s ranch house was located at 680 Poppy. Broomfield was named by the Post Office Department after the wild broomcorn found in the area. The only other Broomfield is in England. It too was named for the broomcorn. The Post Office was established in 1884 with Druella Coulson as postmaster.

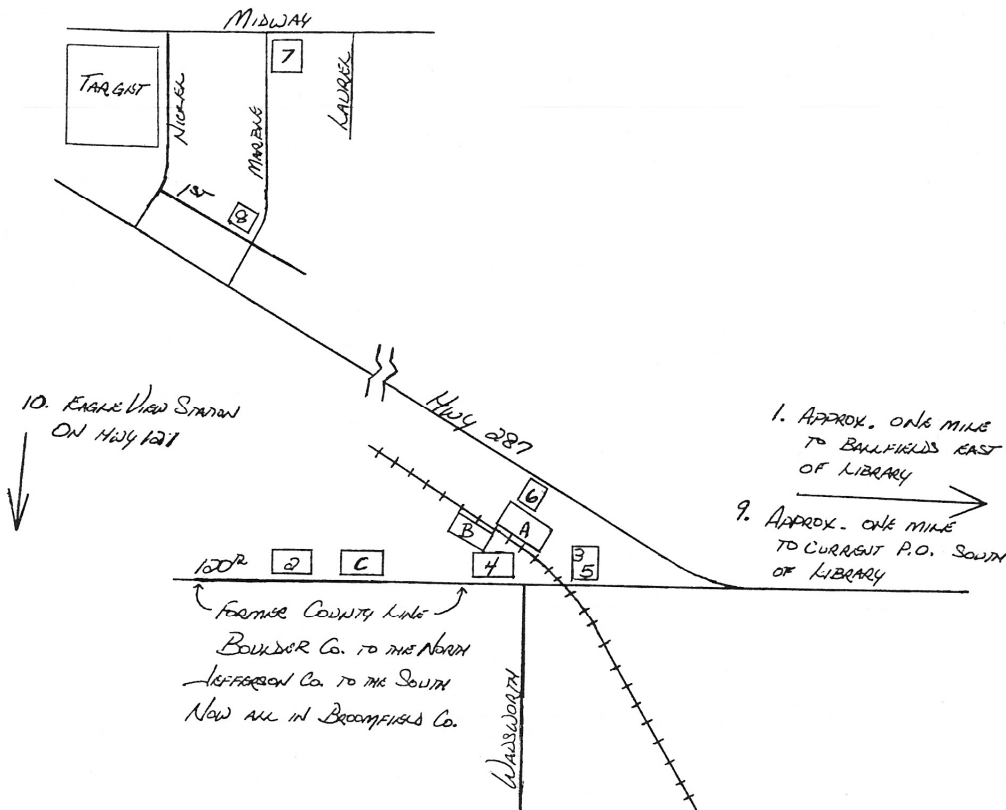
NOTE: I do not know the source of this information - W.H.B.

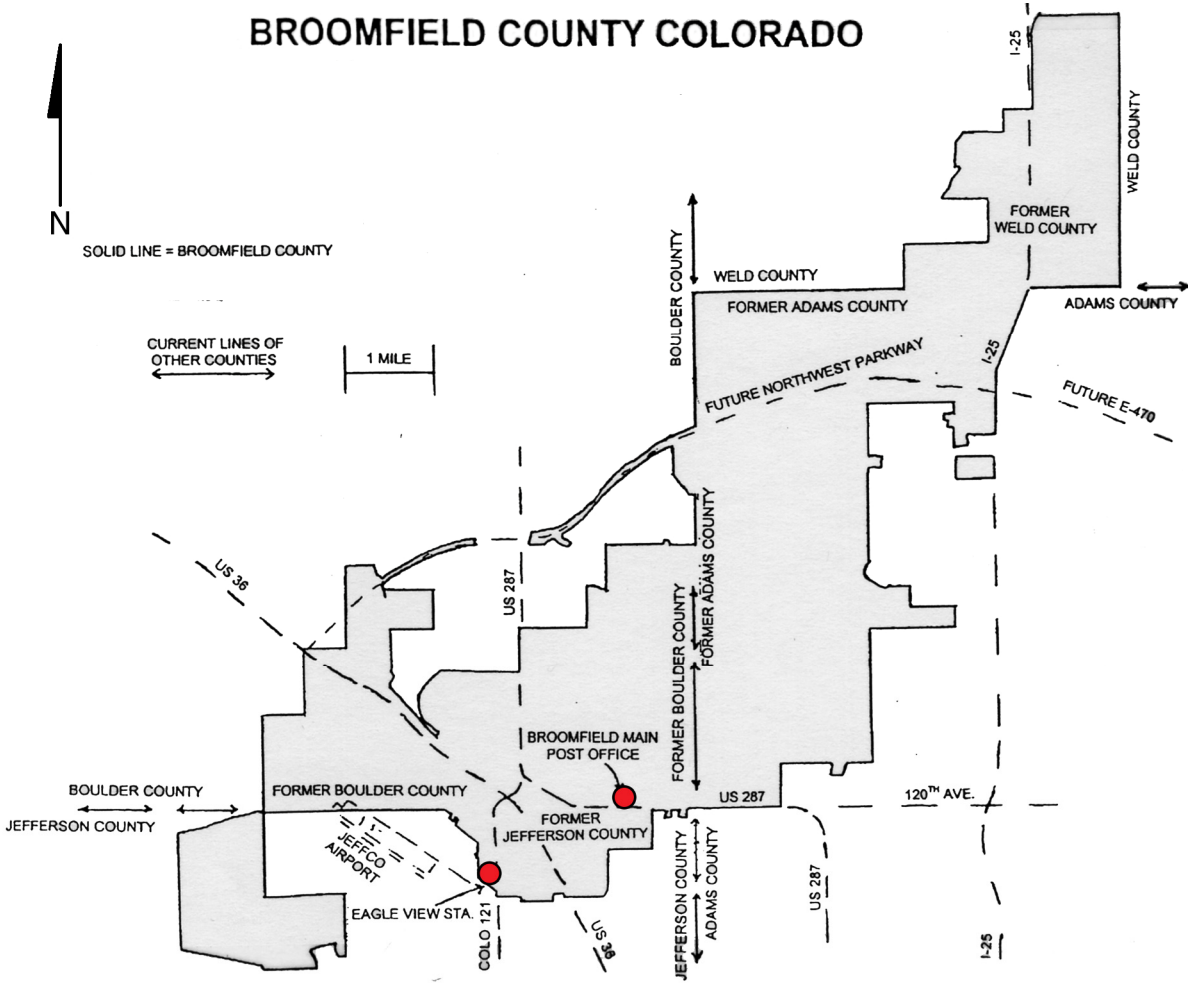
1. **1884** - Established near what is now 120th Avenue, approximately one-half mile west of Sheridan, north of 120th where the three ball fields are now. The town site was just south of Nissan Reservoir. The dam was actually the track location for the Denver, Utah & Pacific Railroad.
2. **1894** - Moved to Matthews family property (7925 West 120th Avenue). Just west of Broomfield Lumber, which according to the 1974 phone book, was located at 7905 West 120th Avenue.
 - . **1900** - Rural Free Delivery begins with two routes. Semper, Eversman and Quimby become Discontinued Post Offices.
3. **1901** - November 10: Moved to Jones Building, east of railroad tracks on 120th Avenue.
 - . **1909** - November 22: Post Office broken into, safe opened, \$680 stolen and never recovered.
4. **1940-1943** - Moved to Broomfield Garage Building at 7701 West 120th Avenue. Building is now State Patrol Building with the original front arches removed.
5. **1943** - Moved back to the Jones Building. Became a Third Class Post Office.
6. **1952** - Moved to 7502 West Highway 287.
7. **1958** - February 16: Moved to 1380 Midway. February 19: City delivery begins.
 - . **1961** - July 1: Became a Second Class Post Office.
 - . **1964** - Became a First Class Post Office.
8. **1972** - December 31: Moved to 1505 West 1st Avenue.
9. **1984** - Moved to 280 East 1st Avenue.
10. **2001** - July 10: Eagle View Station opens at 8800 West 116th Circle, near Jefferson County Airport. This is the first classified station of Broomfield.

KEY TO MAP OF BROOMFIELD POST OFFICE LOCATIONS

(120th Avenue was the Jefferson-Boulder County line until November 15, 2001 when Broomfield became its own county.)

- 1. Original Broomfield location next to Nissan Lake
- 2. Matthews' property 7625 West 120th Avenue
- 3. Jones Building (former site)
- 4. Broomfield Garage/State Patrol Building, 7701 West 120th Avenue
- 5. Jones Building (former site)
- 6. 7502 Highway 287
- 7. 1380 Midway
- 8. 1501 West 1st Avenue
- 9. Current location at 280 East 1st Avenue
- 10. Eagle View Station
- A. Railroad Depot (former site), depot now located at *Depot Hill* on 10th, west of Highway 287
- B. Grain Elevator
- C. Former Broomfield Lumber site, 7905 West 120th Avenue

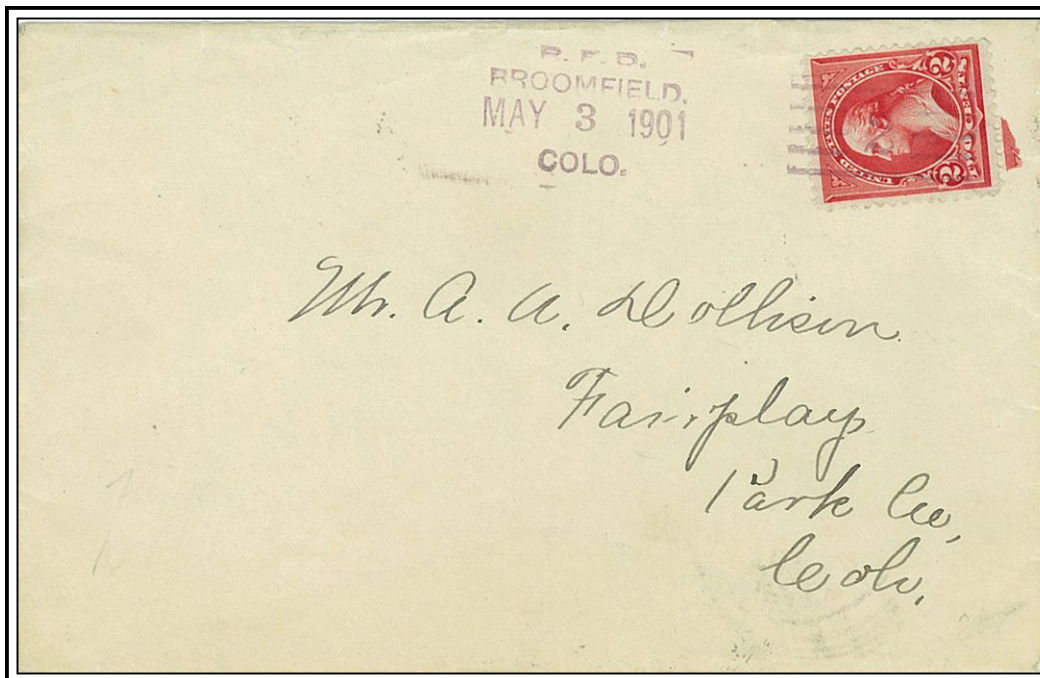




BIBLIOGRAPHY - BROOMFIELD COUNTY

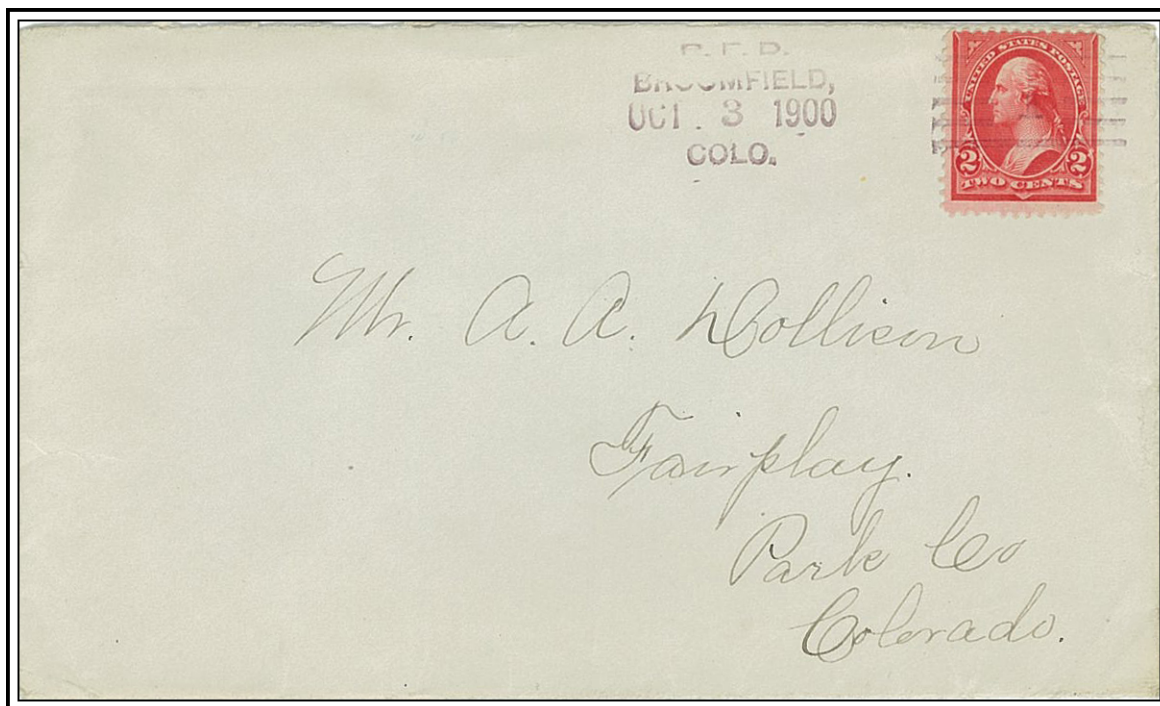
SRM Note: See references for Boulder County. There are no additional references for Broomfield County.

A COVER GALLERY OF BROOMFIELD COUNTY



R. F. D. / BROOMFIELD, / COLO.

May 3, 1901



R. F. D. / BROOMFIELD, / COLO.

October 3, 1900

