

Granite Lake, Cal. Fr.
March 17

COLORADO POSTAL HISTORIAN

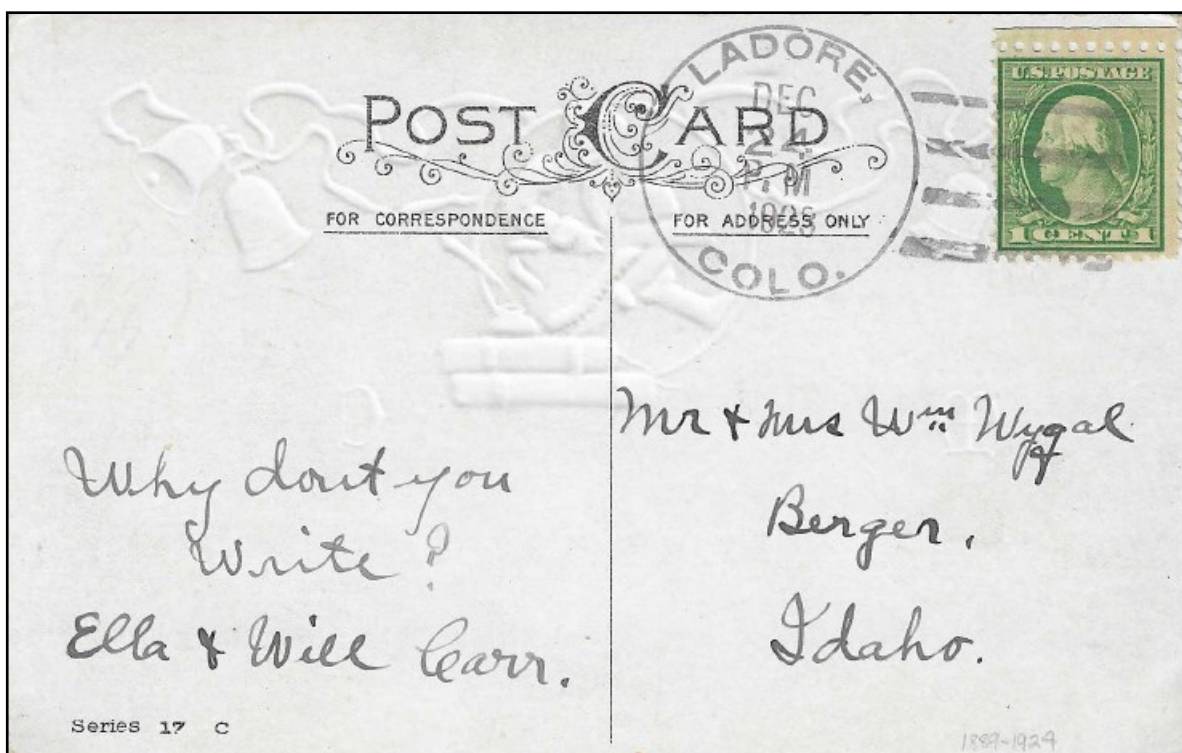


VOLUME 38 NUMBER 4

WHOLE NUMBER 150

May 2024

ISSN-0887-1663



CPHS Photo Archive

CONTENTS

Colorado Wanderings	Page 2
President's Message	Page 2
Tracking a Ranch Post Office.....	Page 3

NEXT MEETING

The next meeting of the Colorado Postal History Society will be on Saturday, May 25, 2024 at 1:00 pm the Rocky Mountain Stamp Show. Bring a Show and Tell item. We will see you there.

EDITOR
Bill German
257 Mockingbird Circle
Lexington, SC 29073-7709
E-mail: pmcceditor@gmail.com

COLORADO POSTAL HISTORIAN
JOURNAL OF THE COLORADO POSTAL HISTORY SOCIETY
Published Four Times Per Year Membership and Subscription \$25.00

SECRETARY / TREASURER
Joe Ditlow
P. O Box 13
Calhan, CO 80808
E-mail: ditlowpj@elpasotel.net

COLORADO WANDERINGS

By Bill German

It is spring. It is time to wander once more. The mountain roads closed for the winter will soon be open again. It is time to go to those post office sites.

In this issue of the *Historian* I take you to several sites of the same post office (although the roads were open in the winter). Ladore / Lodore moved often. The movements of this ranch post office are tracked through post office site reports, *Postal Bulletins*, satellite images and maps.

Postal Bulletins, available through the website www.uspostalbulletins.com/, contain every *Postal Bulletin* from the beginning in 1880 through July 2016. USPS.com has 2001 forward. Prior to World War II the *Postal Bulletin* was a near daily report on changes involving all aspects of the post office such as establishments and discontinuances, postmaster appointments, location moves, star route changes and much more.

This area of Colorado is one of the few areas that I have not wandered into. There is much to see in



Steve Morehead

**BUYS, TRADES,
COLLECTS**

Colorado Postal History

520-241-2161

PO Box 1350

Green Valley, AZ 85622

steveasc@q.com

this “barren” landscape. I am wanting to make a trip there.

Where have you not wandered to? Make plans, take a trip, wander, tell us about your adventure and discoveries.

PRESIDENT’S MESSAGE

By Tonny Van Loij

Some parts of the country may enjoy warm or crazy weather, enjoy. Here in Denver (on the day I write this in late April), it’s wet. Yesterday, it started raining and I mean raining. This morning on my way to the Philatelic Library, it started snowing like crazy. Luckily, it does not stick, all water and inches of that.

Enough of that, time to start attending stamp shows. Here in Denver, we have our annual show coming up, Rocky Mountain Stamp Show. It will be Memorial Day Weekend, May 24-25-26, 2024. The Colorado Postal History Society will have their annual meeting on Saturday May 25, 2024 at 1pm. The last two years, after COVID, we have had a very good turnout. Hope we will do the same this year.

A couple announcements: most of you know that Andy Murin passed away last year. CPHS and RMPL received some materials that can be sold to

the members. The proceeds will go to the publishing fund. Our member Steve Morehead has been working diligently for many years to make the encyclopedia available on flash drive. I know that he has dipped in his pockets over the years doing that. So, we will refund him from some of the proceeds. There are about 100 covers, some average, some good and will be for sale, first come, first served and for a fair price. There are also many covers, everyday material, which will be sold for a donation to the club. There are also, still, covers left, from the Donald Beuthel collection. Please, if interested, make an offer.

We need to sell that because it takes up a lot of space at the library. Hopefully we see a lot of you at the show. If not, let us know how we are doing, if there is something you like to see changed, whatever.

All the best and stay healthy.

Tracking a Post Office's Moves

By Bill German

All post offices that remain open for any length of time move from one location to another. Historically, the location of the post office was provided by the postmaster. It was common for a post office location to change whenever a new postmaster was appointed resulting in moves often. This practice has not been the case for a long time as the Postal Service now owns or leases the post office building.

Brown's Park, which straddles the Colorado-Utah border is a remote sagebrush covered region that once was a hideout for outlaws. Butch Cassidy

would hide out there while trying to lay low. However, it wasn't void of residents. Brown's Park (in Butch's day it was known as Brown's Hole) had cattle ranches. Cattle ranchers needed (and need) postal services like everyone else. To serve that need a ranch would serve as the post office for the area ranches. Often, the rancher would serve as the postmaster. However, postmasters changed more often than post office locations, so it was not always the case where the ranch owner was the postmaster.

Ladore / Lodore in Brown's Park area of Moffat County is a classic example of a ranch post office. We can trace the movements through post office site location reports and *Postal Bulletins*.

(No. 1011—NEW SERIES—JANUARY 1, 1884.)

Post Office Department,
OFFICE OF THE FIRST ASSISTANT P. M. GENERAL,
WASHINGTON, D. C.

SIR: Before the Postmaster General decides upon the application for the establishment of a post office at Ladore, County of Rock, State of Colorado, it will be necessary for you to carefully answer the following questions, get a neighboring postmaster to certify to the correctness of the answers, and return the location paper to the Department, addressed to me. If the site selected for the proposed office should not be on any mail route now under contract, only a "Special Office" can be established there, to be supplied with mail from some convenient point on the nearest mail route by a special carrier, for which service a sum equal to two-thirds of the amount of the salary of the postmaster at such office will be paid.

You should inform the contractor, or person performing service for him, of this application, and require him to execute the inclosed certificate as to the practicability of supplying the proposed office with mail, and return the same to the Department.

Very respectfully,
A. E. Stearns
First Assistant Postmaster General.

To Mr. Charles B. Sears
care of the Postmaster of Rock Springs, Wyo., who will please forward to him.

STATEMENT.

The proposed office to be called Ladore See Lodore

Select a short name for the proposed office, which, when written, will not resemble the name of any other post office in the State.

It will be situated in the SE quarter of Section 18, Township 10 (North — South —), Range 102, West, County of Rock, State of Colorado.
It will be on or near route No. 2912, being the route from Rock Springs to Maybell, on which the mail is now carried once a week.

The contractor's name is do not know

Will it be directly on this route?—Yes

If not, how far from, and on which side of it?—45 miles

How much will it increase the travel of the mail one way each trip?—45 miles

Where will the mail leave the present route to supply the proposed office?—Maybell

Where does the route again?—do not know

What post office will be left out by this change?—do not know

If not on any route, is a "Special Office" wanted?—Yes To be supplied from Maybell

The name of the nearest office to the proposed one, on the same route, is Maybell direction from the proposed office.

Its distance is 45 miles in a South East direction from the proposed office.

The name of the nearest office on the same route, on the other side, is do not know

Its distance is do not know miles in a do not know direction from the proposed office.

The name of the nearest office to the proposed one, not on this route, is do not know direction from the proposed office.

distance by the most direct road do not know

The name of the most prominent river near it is do not know

The name of the nearest creek is do not know

The proposed office will be 2 miles from said river, on the North side of it, and will be 0 miles from said creek, on the South side of it.

The name of the nearest railroad is Union Pacific

If on the line of or near a railroad, on which side will the office be located?—on the line of the railroad

station?—do not know 80 miles Rock Springs

What will be the distance from the proposed site to the nearest station?—do not know

State name of station: do not know

What will be the distance from the proposed site to the nearest station at which mail trains make regular stops?—do not know

If the proposed office is located where it can be supplied from a crane or flag station, or located over 50 rods from the station where mail trains make regular stops, will the mail be carried to and from the proposed office without expense to the Department?—do not know

If it is a village, state the number of inhabitants.—do not know

Also, the population to be supplied by the proposed office.—do not know

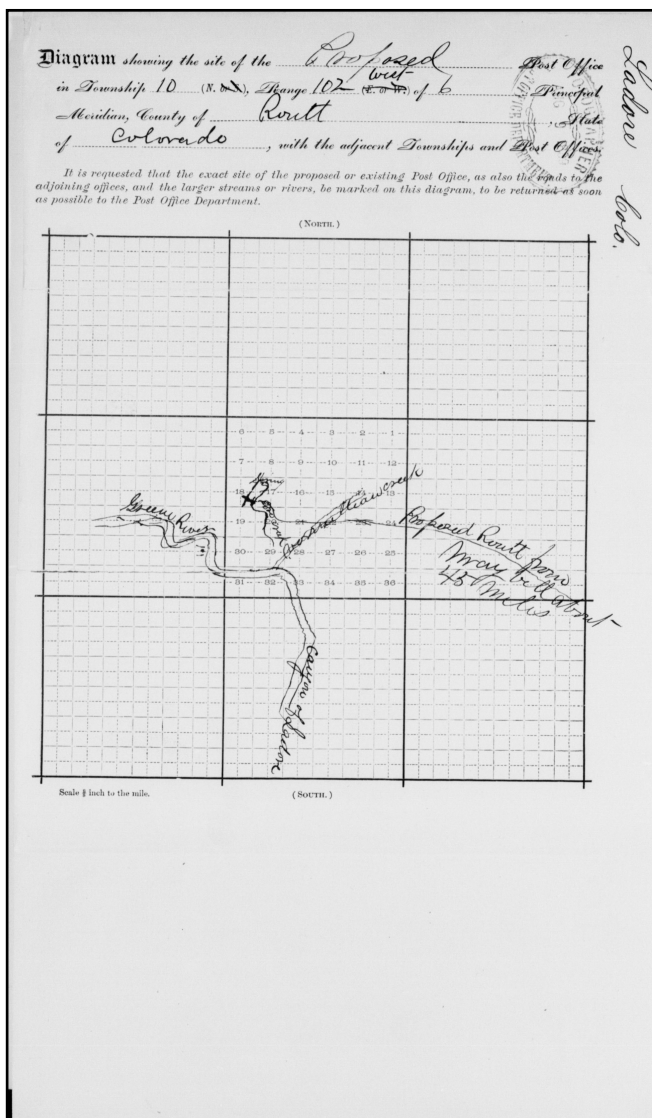
A diagram, or sketch from a map, showing the position of the proposed new office, with neighboring river or creek, roads, and other post offices, towns, or villages near it, will be useful, and is therefore desired.

A correct map of the locality might be furnished by the county surveyor, but this must be without expense to the Post Office Department.

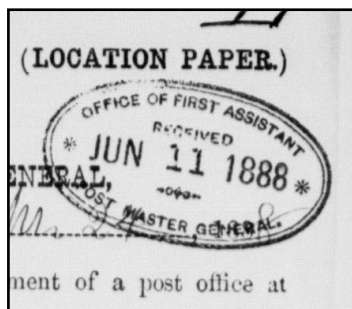
As I am a citizen of the State of Colorado, and according to the best of my knowledge and belief, this do not know day of April, 1888, (P. M. Sign full name.) Charles B. Sears, Proposed P. M.

I CERTIFY that I have examined the foregoing statement, and that it is correct and true, to the best of my knowledge and belief. do not know

Postmaster at Maybell
Rock Co. Colo
(OVER.)



The post office site report for Ladore when Charles B. Sears applied for the office. A site report is submitted upon application, relocation of the post office or whenever the Post Office Department felt it needed an updated report from every post office.



Mr. Sears dated the application April 30, 1888. The application dated receipt (above) was June 11, 1888.

You should inform the contractor, or person performing service for him, of this application, and require him to execute the inclosed certificate as to the practicability of supplying the proposed office with mail, and return the same to the Department.

Very respectfully, *A.E. Stevenson*
First Assistant Postmaster General.

To Mr. *Chas. B. Sears*
care of the Postmaster of *Rock Springs, Wyo.*, who will please forward to him.

STATEMENT.

The proposed office to be called *Ladore* *see Ladore*

Select a short name for the proposed office, which, when written, will not resemble the name of any other post office in the State.

It will be situated in the *SE* quarter of Section *18* Township *10* (North or South) *North* Range *102* (West), in the County of *Routt* State of *Colorado*

It will be on or near route No. *Extension 38124*, being the route from *Route to Maybell* to *Maybell*, on which the mail is now carried *twice* times per week.

The contractor's name is *do not know*

Will it be directly on this route?—Ans. *an extension*

If not, how far from, and on which side of it?—Ans. *45 miles*

How much will it INCREASE the travel of the mail one way each trip?—Ans. *45 miles*

Where will the mail leave the present route to supply the proposed office?—Ans. *Maybell*

Where intersect the route again?—Ans.

Shown are the parts of the report that give us information to location of the post office. The first line says the post office will be in the southeast quarter of Section 18, Township 10 north, Range 102 west in the county of Routt, state of Colorado. Moffat County did not exist until 1911. At that time Routt County encompassed all of current Routt and Moffat Counties. The next lines go on to say the proposed post office will be on contract route 38124 as an extension of that route (not on it somewhere already) 45 miles from Maybell.

Lower on the first page of the report that the most prominent river in the area is the Green River and it is two miles north of said river. The nearest creek is Cove Creek and that it is on the creek. The nearest railroad in is at Rock Springs, Wyoming, 80 miles away.

its distance is _____ miles in a _____ direction from the proposed office.

The name of the nearest office to the proposed one, not on this route, is *Ashtley*

distance by the most direct road *65* miles in a *South West* direction from the proposed office.

The name of the most prominent river near it is *Green River*

The name of the nearest creek is *Cove Creek*

The proposed office will be *2* miles from said river, on the *North* side of it, and will be *0.2* miles from said nearest creek, on the *North* side of it.

The name of the nearest railroad is *Union Pacific*

If on the line of or near a railroad, on which side will the office be located? How far from the track; and what is, or will be, the name of the station?—Ans. *South side 80 miles Rock Springs*

What will be the distance from the proposed site to the nearest flag station?—Ans.

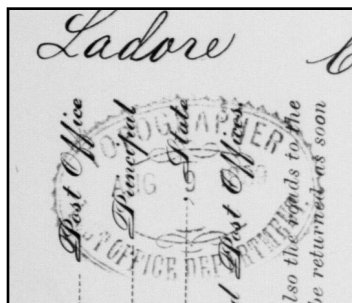
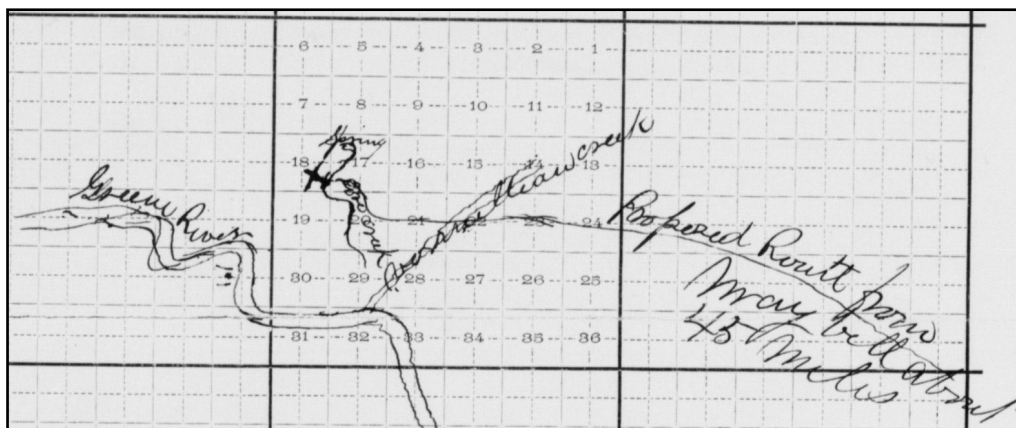
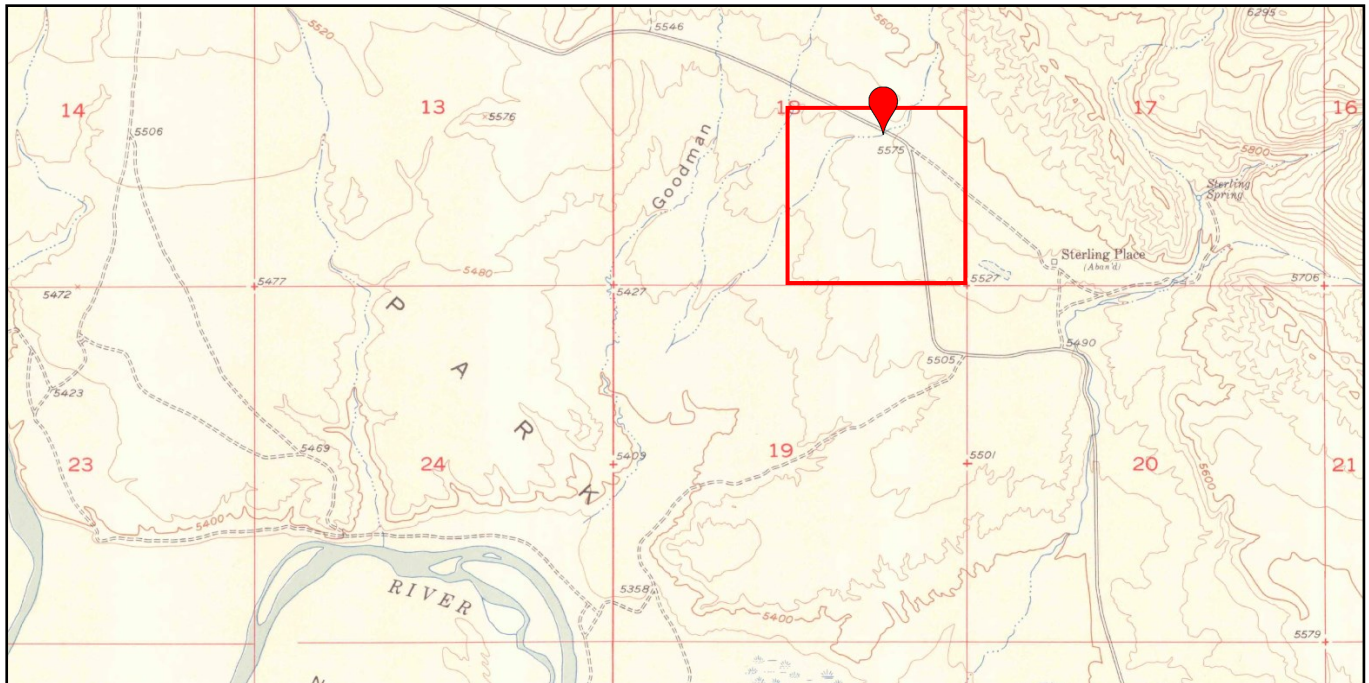


Diagram showing the site of the *Proposed* Post Office *Ladore*
in Township *10* (N. or S.), Range *102* (E. or W.) of *6*
Meridian, County of *Routt*
of *Colorado*, with the adjacent Townships and Post Offices.

The second page of the site location report, interestingly dated August 9, 1889, reiterates the Ladore Post Office is in Township 10 north, Range 102 west but adds the 6th Principal Meridian. A hand drawn map of its location shows the Green River, the proposed contract route, a nearby spring and two creeks (Cove, which stated earlier it is on and another creek whose name is undecipherable).





The 1954 Lodore School Quadrangle from the United State Geological Survey (USGS) shows the sections, the spring some non-labeled creeks and the Green River. The red outline is the southeast quarter of Section 18. Comparing the bend in the Green River, the spring labeled in the USGS map and the creeks we can surmise that the post office was somewhere near the pin. However, the hand drawn map shows Cove Creek with a bend that is flowing from the spring. That matches the bend in the creek south of the site saying Sterling Place. So, Section 18 is wrong in the report or the post office wasn't on that unlabeled creek coming out of the spring.

Aerial view showing the same southeast quarter of Section 18.

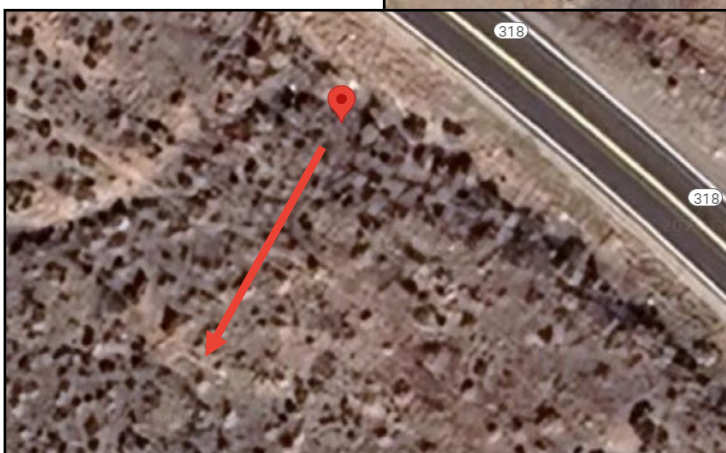
Coordinates of the pin are in traditional degrees, minutes, seconds are

40°49'31.0"N

108°54'04.2"W

and in modern decimal

40.82529, -108.90116.



After a careful look at satellite images and street view on Google maps, the only indication that any thing resembling a post office was in the vicinity (pin is at the coordinates given previously in Section 18) is the small box shape in the lower left corner of the image at left pointed to by the arrow. Given that road lanes are 12 feet wide this box may be 8 feet by 14 feet. A post office size perhaps, but it could have been a cabin, a pen or anything, or nothing at all.

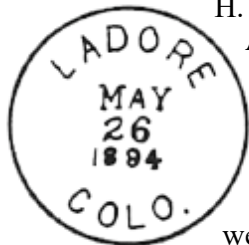
Even though the post office site report was dated as received June 11, 1888, the official establishment of the Ladore post office was nearly a year later on June 3, 1889. Just six months later on January 8, 1890, Amos H. Bassett became postmaster. On

August 4, 1900 the office of postmaster went to Elizabeth A. Blair, as noted in *Postal Bulletin* #6313 dated November 10, 1900. There was also a notice that the Ladore Post Office moved five miles west. There is no matching post office site report. Where was this location five miles west? Assuming modern highway 318 was the post road used by the star route, five miles west via the road puts it somewhere northwest in Section 4 or 5 of T10N R103W. As you can see, there is no indication of anything being there. Even directly west would put it in Section 17 and on the other side of the Green River, a difficult proposition at best. According to *Postal Bulletin* #6600 the Ladore Post Office moved back east six miles on October 25, 1901, a mile further than when it moved west. Could that mile further be Sterling Place on the map on the previous page?

On March 24, 1904 the postmaster reverted back to the Bassett family with Elbert H. Bassett. The final postmaster change before the next known post office site report was Addie Miles who was appointed on October 17, 1904. Again, there was another site change reported in *Postal Bulletin* #7658, April 14, 1905, this one two miles southeast.

The next site report was dated April 30, 1908, twenty years to the day after Charles B. Sears first applied for a post office. Bill Bauer found this one in his research and listed it in his chronology of the Ladore Post Office, but it is not in the grouping I find online at the National Archives Catalog (landing page for catalog: <https://catalog.archives.gov/id/608210>, Moffatt County is <https://catalog.archives.gov/id/68248540>, Ladore specifically is on pages 690 through 698). This report listed the location of the post office the same as the 1888 report with Charles B. Sears as proposed postmaster. Interesting that it listed Sears as "proposed" postmaster. Was this 1908 report a copy of the 1888 one and redated? Did the post office close and reopen? Did Mr. Sears become postmaster again 20 years after his first appointment? There are no corresponding indications listed in any *Postal Bulletin* in 1908.

However, dismissing the 1908 report and leaving the 1905 move in place makes all the subsequent movements not work. So, either the 1905 move did not happen or there was a move back to pre-1905 location not reported anywhere except with this 1908 site report.



POSTMASTERS COMMISSIONED.

Commissioned November 8, 1900.

FOURTH CLASS OFFICES.

Not Money-Order Offices.

Site Changed

Elizabeth A. Blair, Ladore, Routt Co., Colo

POST OFFICE SITE CHANGED.

COLORADO.

Ladore, Routt Co., 5 ms. W., on Route 65342.
[5 aug 1900]

POST OFFICE SITE CHANGED.

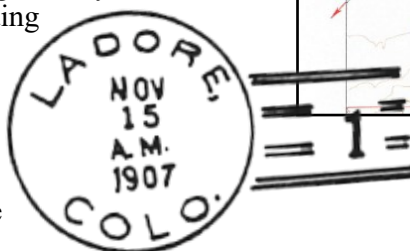
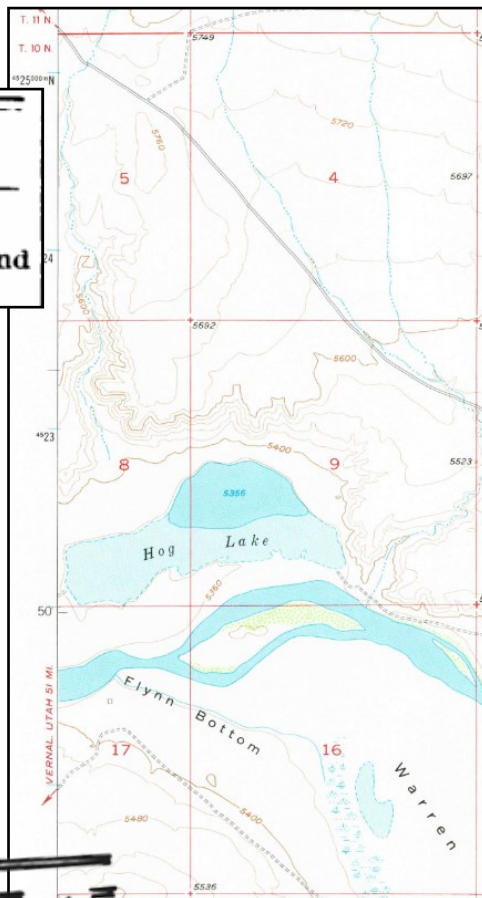
COLORADO.

Ladore, Routt Co., 6 ms. E., on 65342.
[25 oct 01]

POST OFFICE SITE CHANGED.

COLORADO.

Ladore, Routt Co., 2 ms. S. E., on 65148 and 69248. [14 apr 05]



76713. [7 mar
COLORADO.
 Ladore, Routt Co., 3 ms. S., on 64200, 65158
 and 69224. [11 mar

Sites Changed.
 John H. Chew, Ladore, Routt Co., Colo
 John W. Chapman

Following the 1908 report, John H. Chew became postmaster on March 3, 1910 as seen in *Postal Bulletin* #9208 dated May 11, 1910 notice (above), which also contained a notice about a site change. There is no corresponding site report. The three miles south indicated will be reviewed shortly with the next site report.

Elbert Bassett again was commissioned postmaster on November 20, 1912 recorded in *Postal Bulletin* #9982. This coincides with a move back northeast three miles found in the same *Bulletin* (right).

Willa P. McClure on April 14, 1914 and Francis M. Willis on January 30, 1915 are appointed postmaster. Then there is a curiosity. *Postal Bulletin* #10875, October 26, 1915, listed Ladore as discontinued effective October 30, 1915, which has not been known before. Then in *Postal Bulletin* #11086, July 6, 1916, shows Ladore as re-established.

This leads us to our next online post office site report signed on December 30, 1915 by Willa B. McClure and handwritten as received January 1916, shown at right. Notice the word "Applicant" on the site report and that her initial is now correct with a B.

POSTMASTERS COMMISSIONED.
(PRESIDENTIAL.)

(FOURTH CLASS.)
Nov. 19, 1913.
 John F. Paulk Campo Seco, Cal
 Elbert Bassett Ladore, Colo
 Luna M. Huffman.

POST OFFICE SITES CHANGED.

COLORADO.
 Ladore, Moffat Co., 3 ms. NE., on 65177
 and 69178. [19 july

POST OFFICES DISCONTINUED.

VIRGINIA.
 Rosenberger, Frederick Co. Modify order
 of Oct. 21, 1915 (Bul. 10872), so as to show
 supply as 14128, instead of 141128. [23 oct

Effective Oct. 30, 1915.
COLORADO.
 Ladore, Moffat Co. special. Mail to Sun-
 beam. Supplies to Denver. [25 oct

POST OFFICES ESTABLISHED

ARKANSAS.

74677. Evening
 Special from
 ms. N. (Ma

82561. Olldale
 Center, 3 ms. NE. of Bakersfield, 3 ms. S.
 (R. D. 5, Box 88, Bakersfield.)* [15 June

COLORADO.
 10624. Ladore (4217). Moffat Co. Special
 from Sunbeam.* 55 ms. E.; Bridgeport,
 Utah, 20 ms. W. (Re-established.)
 [25 feb

LOCATION OF PROPOSED POST OFFICE

DIVISION OF
 POSTMASTERS' APPOINTMENTS

Post Office Department
 FIRST ASSISTANT POSTMASTER GENERAL
 Washington

IN REPLYING
 MENTION INITIALS AND DATE

Dec. X, 1915
 Jan. 1916

SIR: With reference to the proposed establishment of a post office at the point named below, and in order that the office, if established, may be accurately represented upon the post-route maps, it is requested that you furnish accurately the information called for below and prepare a sketch according to instructions on opposite side of paper, which should be returned to the First Assistant Postmaster General, Division of Postmasters' Appointments, as soon as possible.

Respectfully,
 4217
 Ladore (Name) Moffat (County) Colo. (State)

Proposed post office, Ladore, Moffat, Colo.

If the town, village, or site of the post office be known by another name than that of the post office, state that other name here:

The post office would be situated in the the N.W. quarter of section No. 34, in Township 10 N. Range 102 W. of the 6th principal meridian, County of Moffat, State of Colorado.

The name of the nearest river is The Green and the post-office building would be at a distance of 2 miles on the E. side of it.

The name of the nearest creek is Vermillion and the post-office building would be at a distance of 1 mile on the N. side of it.

The name of the nearest office on the same route as this proposed post office is Sunbeam, Colo. and its distance is 55 miles, by the traveled road, in a E. direction from the site of this proposed office.

The name of the nearest office on the same route, on the other side, is Bridgeport, Utah and its distance is 20 miles, in a W. direction from the site of this proposed office.

The route as this proposed post office is Lily, Colo. traveled road, in a SE. direction from the site of this proposed office.

side of the Railroad, track. The railroad station name is

The post office would be 10 miles, air-line distance, N. or W. to the nearest point of my county boundary.

Signature of Applicant for Postmaster: Willa B. McClure

Date: Dec. 30, 1915

FIRST ASSISTANT POSTMASTER GENERAL.

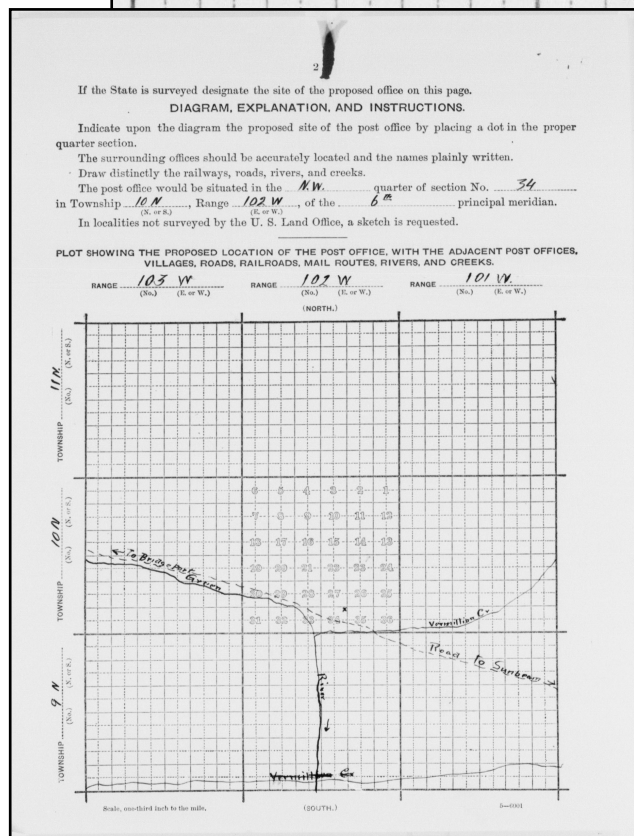
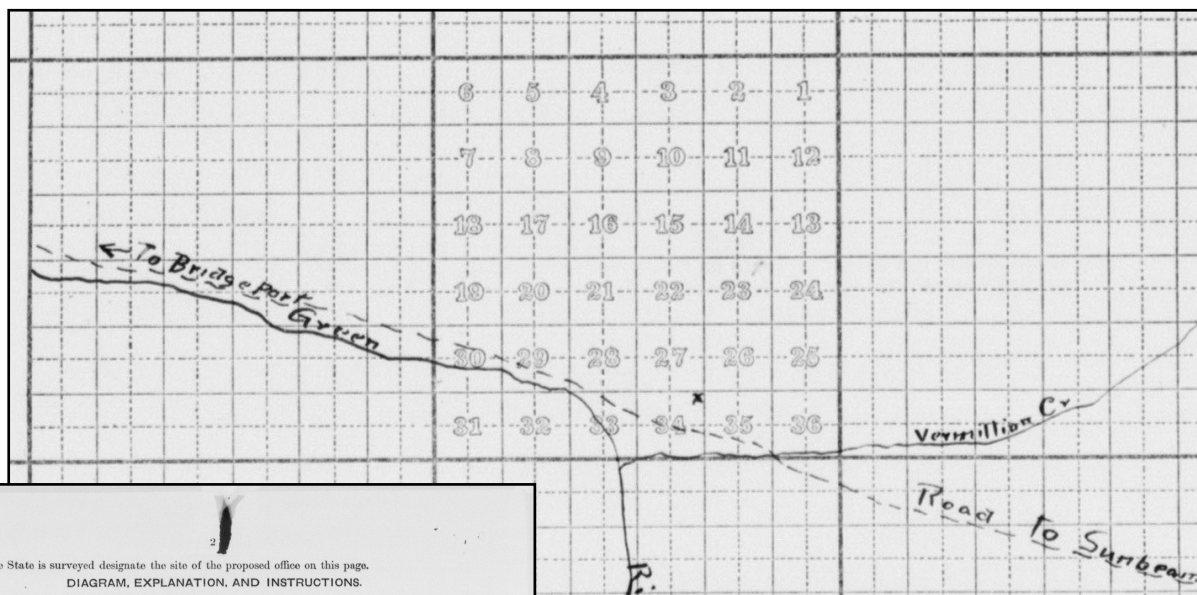
Proposed post office, 4217
Ladore (Name.) Moffat (County.) Colo (State.)

If the town, village, or site of the post office be known by another name than that of the post office, state that other name here:

The post office would be situated in the N.W. quarter of section No. 34, in Township 10 N. Range 102 W. of the 6th principal meridian, County of Moffat State of Colorado

The name of the nearest river is The Green, and the post-office building would be at a distance of 2 miles on the E. side of it.

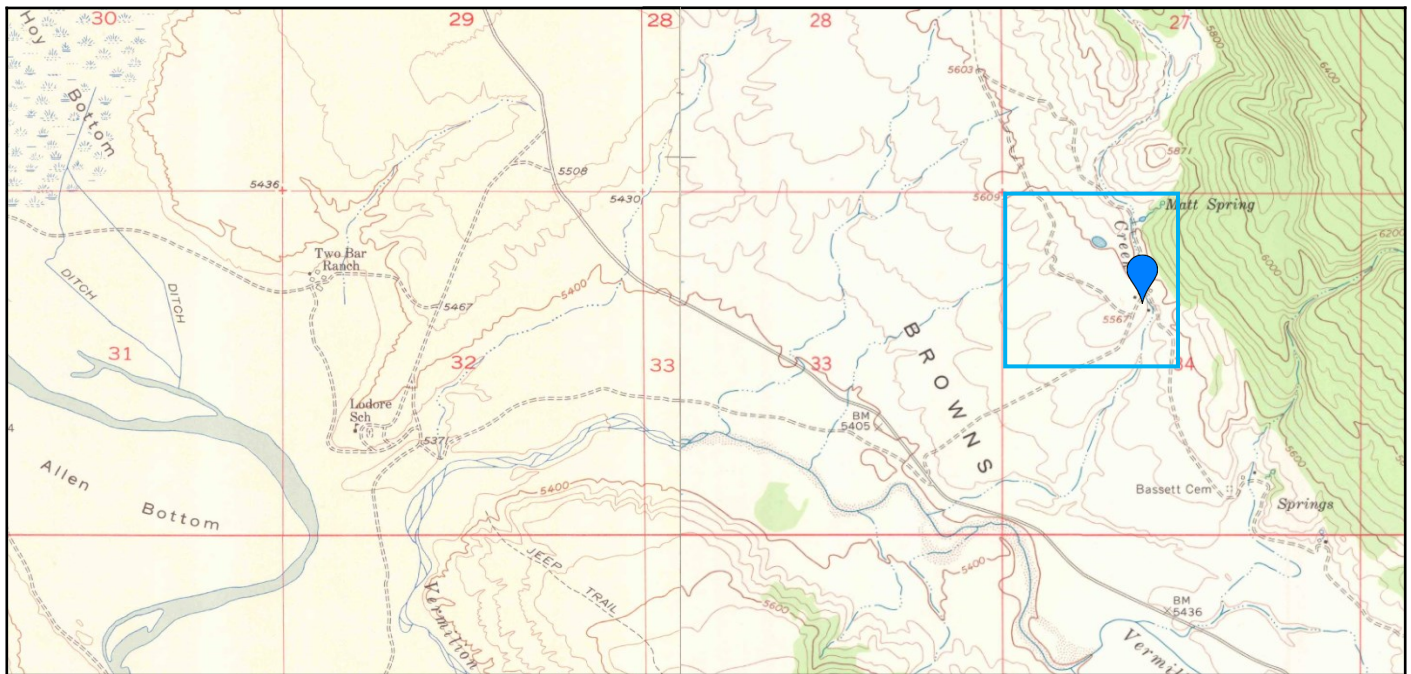
The name of the nearest creek is Vermillion, and the post-office building would be at a distance of 1 mile on the N. side of it.



This is the first confirmed site report move of the Ladore Post Office. It was moved to the northwest quarter of Section 34, Township 10 north, Range 102 west of the 6th principal meridian (but drawn in the northeast quarter). It was six miles east of the Green River, a mile north of Vermillion Creek.

Below a tracing from Ladore. All tracings in the Colorado Postal Encyclopedia are of markings before this move.





Currently, there is a ranch located at the blue pin ($40^{\circ}47'09.2''\text{N}$ $108^{\circ}51'05.1''\text{W}$ or 40.78571, -108.85147). That ranch was probably there 108 years ago when the post office moved to the location described in the 1915/16 site report, which makes it quite likely the location of the post office that Willa B. McClure applied for.

Something to note is the Bassett Cemetery located at the bottom of the map. There were a couple of Bassetts as postmaster before this site report was filed. Was the post office at this location before 1915? I believe so, but not by a Bassett. John Chew moved the post office three miles south, which fits this location. Curiously, Elbert Bassett moved it back three miles northeast in 1912. I believe a Bassett branch of the family lived at Sterling Place. There is a ranch just to the southeast of the Bassett Cemetery. The ranch and cemetery are separated by farm fields. The road that leads to the Bassett Cemetery comes from the ranch identified at the likely spot of the post office. A search of property ownership in Moffatt County to see if there is any family connection shows the post office ranch (actually the entire northwest quarter section) as owned by the Blevins Family Trust. The ranch across the fields is currently owned by William D. Miller and previously owned by Jessie L. Rowley. The land where the cemetery is (and the northern half of the fields) is owned by the Ann B. Willis Estate, care of Sam C. Bassett, Jr. Willis was the name of the postmaster in 1915 before the reported closure.

Please fill out and return this paper at once,

2

PROPOSED LOCATION OF POST OFFICE

Post Office Department
FIRST ASSISTANT POSTMASTER GENERAL
Washington

Mr. Edward C. Cox,
Ladore,
Colo.

Sir:

With reference to the proposed change in site of the post office named Ladore, which office that the office if changed to the proposed location may be accurately represented upon the post-office map, it is requested that you carefully answer the questions below and furnish a sketch according to instructions on opposite side of paper, which should be returned to the First Assistant Postmaster General, Division of Postmasters' Appointments, as soon as possible.

Respectfully,

FIRST ASSISTANT POSTMASTER GENERAL.

Ladore Moffat Colorado
(Post Office) (County) (State)

If the town, village, or site of the post office be known by another name than that of the post office, state that other name here

The post office, if changed to the proposed site, would be Two Miles, air-line distance, East from its present location.

The post office would be situated in the NE 1/4 of SW 1/4 quarter of section No. 2 in Township 9 N. Range 102 W., of the 6 P.M. principal meridian, County of Moffat State of Colorado

The name of the nearest river is Green River, and the post-office building would be at a distance of Three Miles on the North East side of it.

The name of the nearest creek is Trimmick Reservoir, and the post-office building would be at a distance of One half Mile on the North side of it.

The name of the nearest office on the same route as this post office is Trimmick, and its distance is 1.5 miles, by the traveled road, in a South East direction from the proposed site of this office.

The name of the nearest office on the same route, on the other side, is Trimmick, and its distance is 1.5 miles, in a South East direction from the proposed site of this office.

The name of the nearest office not on the same route as this post office is Trimmick, and its distance is 2.0 miles, by the traveled road, in a South East direction from the proposed site of this office.

The post office building would be on the South East side of the Trimmick Railroad, and at a distance of 1.5 miles from the track. The railroad station name is Trimmick.

The post office would be Two Miles, air-line distance, East from the nearest point of my county boundary.

Signature of Postmaster E. C. Cox
Date May 25th 1922

8021 3-1022

Ladore Moffat Colorado
(Post Office) (County) (State)

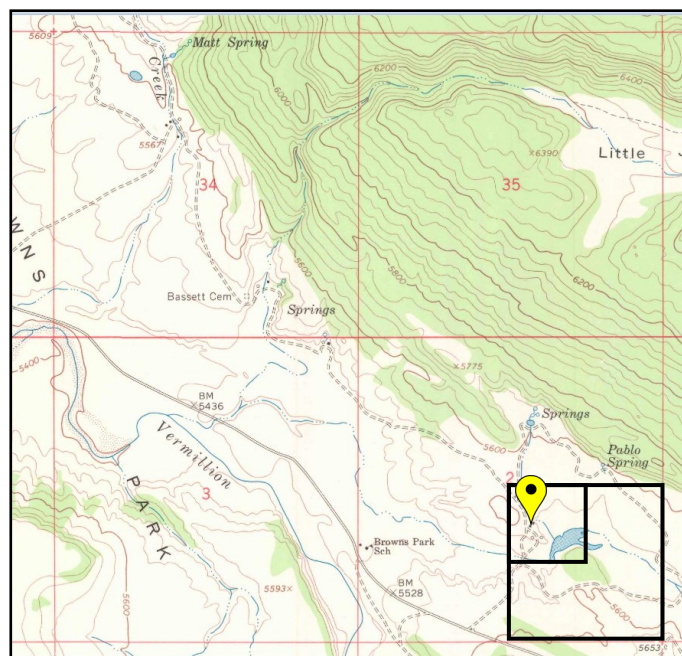
If the town, village, or site of the post office be known by another name than that of the post office, state that other name here

The post office, if changed to the proposed site, would be Two Miles, air-line distance, East from its present location.

The post office would be situated in the NE 1/4 of SW 1/4 quarter of section No. 2 in Township 9 N. Range 102 W., of the 6 P.M. principal meridian, County of Moffat State of Colorado

The name of the nearest river is Green River, and the post-office building would be at a distance of Three Miles on the North East side of it.

The name of the nearest creek is Trimmick Reservoir, and the post-office building would be at a distance of One half Mile on the North side of it.



Mrs. Willa B. Eccles is listed as the next postmaster after the move. This is a name change after a marriage. The next site report indicated a move in May 1922 two miles east of previous location into Section 2 (the northeast quarter of the southwest quarter) Township 9N, Range 102W. (From here on site reports and Postal Bulletins agree.) This nearly matches with a ranch presently owned by Rancho Greco Ltd., a corporate ranch that has several properties in Moffat County. Section 2 is southeast of Section 34. Note that E.C. Cox signed the site report. He was officially appointed acting postmaster on June 7, 1922, two days before date stamp, and appointed July 15, 1922. Also note that the Bassett connection is present with Bassett reservoir #2.



In connection with proposed change of site of Postoffice, Please fill out this location paper at your very earliest convenience and return to this office. Also submit with it a petition asking for said change of site, signed by a majority of the patrons of your office.

POST OFFICE DEPARTMENT
FIRST ASSISTANT POSTMASTER GENERAL
Nov. 9, 1922,

Mr. Edward C. Cox, P.M.
Ladore,
Colorado

Sir:

With reference to the proposed change in site of the post office named below, and in order that the office if changed to the proposed location may be accurately represented upon the post-route maps, it is requested that you carefully answer the questions below and furnish a sketch according to instructions on opposite side of paper, which should be returned to the First Assistant Postmaster General, Division of Postmasters' Appointments, as soon as possible.

Respectfully,
Chq name of Ladore to Rodore
Apr. 1, 1924.

FIRST ASSISTANT POSTMASTER GENERAL

Ladore (Post Office)
Moffat (County)
Colorado (State)

If the town, village, or site of the post office be known by another name than that of the post office, state that other name here

The post office, if changed to the proposed site, would be Five Miles air-line distance, North West from its present location. (N., S., E., or W.)

The post office would be situated in the North East quarter of section No. 17 in Township 10 N. Range 102 W. of the 6th P.M. principal meridian, County of Moffat (N. or S.) (E. or W.)

State of Colorado

The name of the nearest river is Green River, and the post-office building would be at a distance of One & one half Miles on the North side of it. (N., S., E., or W.)

The name of the nearest creek is Thompson Creek, and the post-office building would be at a distance of Two Miles on the N.W. side of it. (N., S., E., or W.)

The name of the nearest office on the same route as this post office is Laryatone and its distance is 2.7 miles, by the traveled road, in a S.E. direction from the proposed site of this office. (N., S., E., or W.)

The name of the nearest office on the same route, on the other side, is Laryatone and its distance is 2.7 miles, in a S.E. direction from the proposed site of this office. (N., S., E., or W.)

The name of the nearest office not on the same route as this post office is Limwood Utah and its distance is 6.0 miles, by the traveled road, in a N.W. direction from the proposed site of this office. (N., S., E., or W.)

The post office building would be on the side of the road side of the road, Railroad, and at a distance of from the track from the nearest station name is from the nearest point of my county boundary.

The post office would be Five Miles air-line distance, N.E. from the nearest point of my county boundary. (N., S., E., or W.)

Signature of Postmaster: Edward C. Cox
Date: Dec 8 1922

Ladore (Post Office)
Moffat (County)
Colorado (State)

If the town, village, or site of the post office be known by another name than that of the post office, state that other name here

The post office, if changed to the proposed site, would be Five Miles air-line distance, North West from its present location. (N., S., E., or W.)

The post office would be situated in the North East quarter of section No. 17 in Township 10 N. Range 102 W. of the 6th P.M. principal meridian, County of Moffat (N. or S.) (E. or W.)

State of Colorado

The name of the nearest river is Green River, and the post-office building would be at a distance of One & one half Miles on the North side of it. (N., S., E., or W.)

The name of the nearest creek is Thompson Creek, and the post-office building would be at a distance of Two Miles on the N.W. side of it. (N., S., E., or W.)

The name of the nearest office on the same route as this post office is Laryatone

In November 1922, Edward Cox, the postmaster appointed a few months earlier in July, petitioned for the post office to move. Date stamped received on December 12, 1922, the post office was to move five miles northwest to the northeast quarter of Section 17 Township 10N Range 102W. This is very close to where Ladore first operated (red pin next page).

Strangely, Mr. Cox's hand drawn map is off (top map below), unless it is rotated 90° counterclockwise to orient to north at top (bottom map below). It shows the post office on a side road off the main road. However, he shows Sections 17 and 18 correctly positioned before rotation.

If the State is surveyed designate the proposed site of the office on this page.

DIAGRAM, EXPLANATION, AND INSTRUCTIONS.

Indicate upon the diagram the proposed site of the post office by placing a dot in the proper quarter section.

The surrounding offices and the present site of this office should be accurately located and the names plainly written.

Draw distinctly the railways, roads, rivers, and creeks.

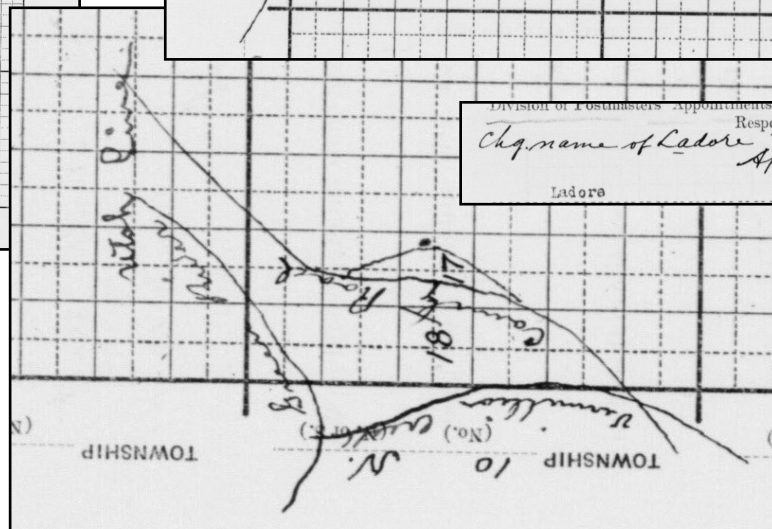
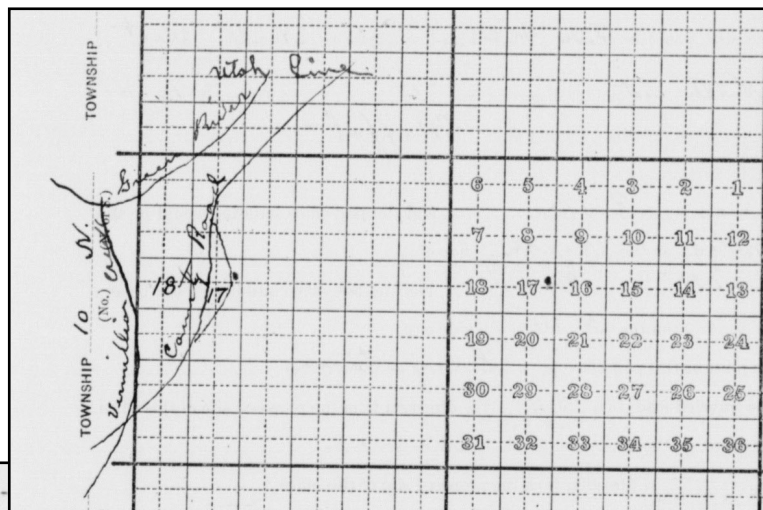
The post office would be situated in the South East quarter of section No. 17 in Township 10 North Range 102 W. of the 6th P.M. principal meridian. (N. or S.) (E. or W.)

In localities not surveyed by the U. S. Land Office, a sketch map is requested.

RANGE 102 W. (N. or W.) RANGE (N. or W.) RANGE (N. or W.)

TOWNSHIP 10 N. (N. or S.) TOWNSHIP (N. or S.) TOWNSHIP (N. or S.)

Sketch, mounted back to the left.

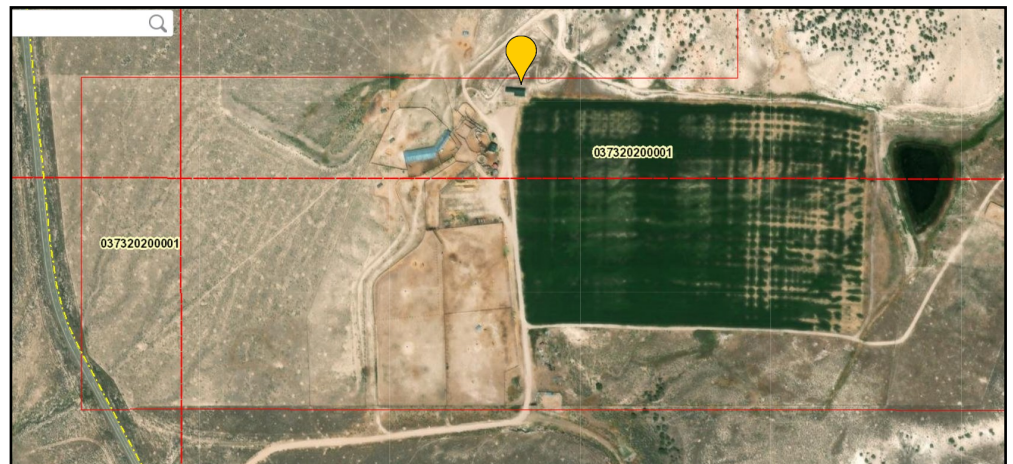
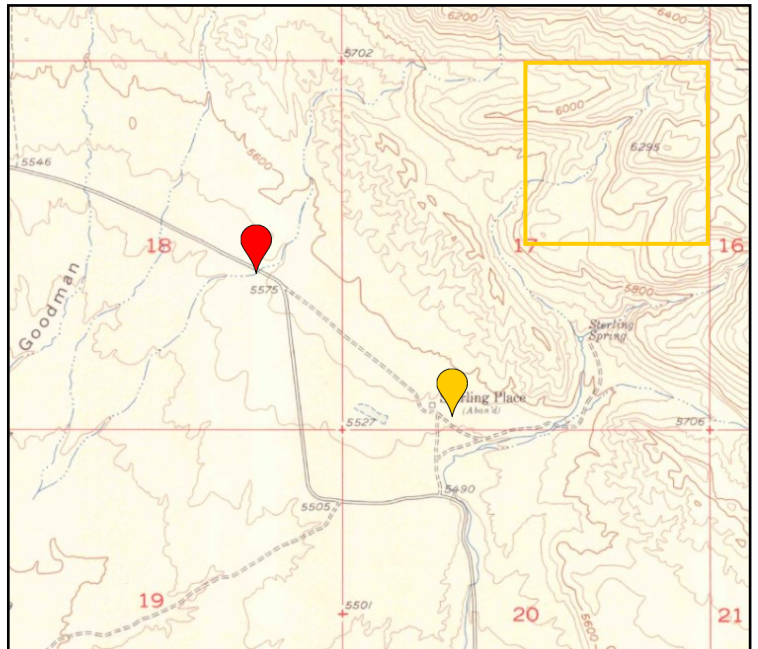


Division of Postmasters' Appointments, as soon as possible.
Respectfully,
Chq name of Ladore to Rodore
Apr. 1, 1924.

Ladore

This is the first time in the site reports that we also get an inkling of future events with the handwritten notation (far right) of name change in April 1924 on the first page (top). These notes can be found in more site reports after this date.

The northeast quarter is shown as the gold box in the images at right. I question the northeast quarter. It is hilly and is off the main road quite a bit with no paths leading to the area, not to say there wasn't one a hundred years ago. In the southwest quarter, however, there is a ranch site called Sterling Place (gold pin on the only building that looks like it could be a house, 40°49'12.6"N 108°53'30.9"W or 40.820158, -108.891921). There is a road leading up to it and away just as Mr. Cox shows in his drawing. He also states the post office is one and half miles northeast of the Green River (measured at 1.75 miles using Google Maps) and two miles northwest of Vermilion Creek (2.79 miles using Google Maps). Finally, a property map (bottom right) of Moffat County shows this ranch being split by the section boundary (the heavier dashed line through the center). Given all this evidence, I, as did Bill Bauer, believe Sterling Place to be the site of the December 1922 move. I believe Sterling Place was the location of the Postal Bulletin-reported moves in 1901 and 1912 as well.



21

DIVISION OF Topography
EQUIPMENT AND SUPPLIES
(TOPOGRAPHY BRANCH)

Post Office Department
FOURTH ASSISTANT POSTMASTER GENERAL
Washington

APR 24 1924
TOPOGRAPHY

Postmaster, Lodore Late Lodore
Moffat County Daggett Co
Calo. Utah

Effective Apr. 1, 1924

In order that the site of your post office may be accurately represented upon the post-route maps, it is requested that you carefully answer the questions below and furnish a sketch, according to instructions on opposite side of paper, which should be returned to this Division as soon as possible.

Chg into Daggett Co. Utah 5/1933 FOURTH ASSISTANT POSTMASTER GENERAL.

The name of my postoffice is Lodore

If the town, village, or site of the post office be known by another name than that of the post office, state that other name here:

My post office is situated in the North East quarter of Section No. 17, in Township 10 N Range 102 W. of the Sixth principal meridian, County of Moffat State of Colorado

The name of the nearest river is Green River, and the post-office building is at a distance of Two Miles on the North side of it.

The name of the nearest creek is Vermillion Creek, and the post-office building is at a distance of Three Miles on the North West side of it.

The name of the nearest office on my route is Greyhounds Calo and its distance is 25 miles, by the traveled road, in a South East direction from this, my office.

The name of the nearest office on my route, on the other side, is None and its distance is _____ miles, in a _____ direction from this, my office.

The name of the nearest office not on my route is Linwood Utah and its distance is 40 miles, by the traveled road, in a South West direction from this, my office.

The post-office building is on the _____ side of the _____ Railroad, and at a distance of _____ from the track.

The railroad station name is _____

The air-line distance from my post office, to the nearest point of my county boundary is Six miles, in a S. W. direction.

Postmaster Edward L. Cox
Date April 14th 1924

DIAGRAM, EXPLANATION, AND INSTRUCTIONS

Indicate upon the diagram the site of the post office by placing a dot in the proper quarter section. The surrounding offices should be accurately located and the names plainly written. Draw distinctly the railways, roads, rivers, and creeks. The post office is situated in the North East quarter of section No. 17 in Township 10 N. Range 102 W. of the Sixth principal meridian. In localities not surveyed by the U. S. Land Office, a sketch is requested.

This site reports notes the name change to Lodore, which took effect April 1, 1924. Lodore comes from a poem by Robert Southey called How the Water Comes Down at Lodore.

Edward Cox was still the postmaster at this point. He still had his description as the northeast quarter, but should it read southwest? His mileages to the Green River and Vermillion Creek were closer to what we discovered reviewing the December 1922 report.

Again, we have a clue to the future with the notation about Daggett County, Utah in 1933.

Washington

Postmaster, Lodore Late Lodore
Moffat County Daggett Co
Calo. Utah

Effective Apr. 1, 1924

In order that the site of your post office may be accurately represented upon the post-route maps, it is requested that you carefully answer the questions below and furnish a sketch, according to instructions on opposite side of paper, which should be returned to this Division as soon as possible.

Chg into Daggett Co. Utah 5/1933 FOURTH ASSISTANT POSTMASTER GENERAL.

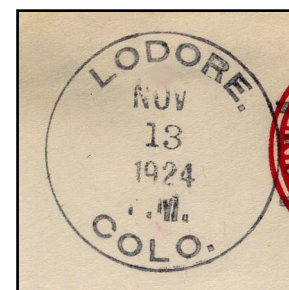
The name of my postoffice is Lodore

If the town, village, or site of the post office be known by another name than that of the post office, state that other name here:

My post office is situated in the North East quarter of Section No. 17, in Township 10 N Range 102 W. of the Sixth principal meridian, County of Moffat State of Colorado

The name of the nearest river is Green River, and the post-office building is at a distance of Two Miles on the North side of it.

The name of the nearest creek is Vermillion Creek, and the post-office building is at a distance of Three Miles on the North West side of it.



PMCC Museum Willett/Thompson Collection

Right: the only known postmark from Lodore, a square cut from an envelope. As it was space saving, this was common for collectors in the late 19th century and first half of the 20th century. While unfortunate the entire cover was not saved, without these cuts a number of only known markings would not exist.

1051
DIVISION OF POSTMASTER APPOINTMENTS
PROPOSED CHANGE IN LOCATION OF POST OFFICE
IN REPLYING MENTION INITIALS AND DATE
Post Office Department
FIRST ASSISTANT POSTMASTER GENERAL
Washington
SEP 8 1929
DIVISION OF POSTMASTER APPOINTMENTS
SEP 30 1929

Miss FANNIE Calloway
Lodere, Colo

Aug. 27, 29

Section:
With reference to the proposed change in site of the post office named below, and in order that the office if changed to the proposed location may be accurately represented upon the post-route maps, it is requested that you carefully answer the questions below and furnish a sketch according to instructions on opposite side of paper, which should be returned to the First Assistant Postmaster General, Division of Postmasters' Appointments, as soon as possible.
Respectfully,

Chg into Daggett Co. FIRST ASSISTANT POSTMASTER GENERAL
Utah 5/1933
Lodere (Post Office)
Moffat (County)
Colo (State)

If the town, village, or site of the post office be known by another name than that of the post office, state that other name here

The post office, if changed to the proposed site, would be 2.5 miles air-line distance, 3.5 miles from its present location.
(N., S., E., or W.)

The post office would be situated in the South West quarter of section No. 35 in Township 11 N. Range 103 W. of the 6th principal meridian, County of Moffat, State of Colorado.
(N. or S.) (E. or W.)

The name of the nearest river is Green, and the post-office building would be at a distance of 2.5 miles on the North side of it.
(N., S., E., or W.)

The name of the nearest creek is Resner, and the post-office building would be at a distance of 5 miles on the South side of it.
(N., S., E., or W.)

The name of the nearest office on the same route as this post office is Daggett, Colo., and its distance is 2.5 miles by the traveled road, in a South direction from the proposed site of this office.
(N., S., E., or W.)

The name of the nearest office on the same route, on the other side, is _____, and its distance is _____ miles, in a _____ direction from the proposed site of this office.
(N., S., E., or W.)

The name of the nearest office not on the same route as this post office is _____, and its distance is 10.5 miles by the traveled road, in a _____ direction from the proposed site of this office.
(N., S., E., or W.)

The post office building would be on the _____ side of the _____ Railroad, and at a distance of _____ from the station. The railroad station name is _____.

The post office would be _____ air-line distance, _____ from the nearest point of my county boundary.

Signature in full: FANNIE Calloway
Date: September 7, 1929

2

If the State is surveyed designate the proposed site of the office on this page.
DIAGRAM, EXPLANATION, AND INSTRUCTIONS.

Indicate upon the diagram the proposed site of the post office by placing a dot in the proper quarter section.

The surrounding offices and the present site of this office should be accurately located and the names plainly written.

Draw distinctly the railways, roads, rivers, and creeks.

The post office would be situated in the South West quarter of section No. 35 in Township 11 N., Range 103 W., of the 6th principal meridian.
(N. or S.) (E. or W.)

In localities not surveyed by the U. S. Land Office, a sketch map is requested.

RANGE 103 W. (N. or W.) (S. or W.)
TOWNSHIP 11 N. (N. or S.) (S. or S.)
SECTION 35

Sketch map showing the proposed site of the post office (indicated by a dot) in the South West quarter of section No. 35, Township 11 N., Range 103 W., of the 6th principal meridian.

Edward Cox remained postmaster until April 1, 1926 when Robert I. Grounds became acting postmaster and appointed a month later. Edward Cox took the reins again in January 1927. Florence Trevenen became postmaster on August 8, 1928.

In August or September 1929 there was another move. This one was five and half miles to the northwest to the southwest quarter of

Section 35 Township 11 north Range 103 west. Found in that quarter is an abandoned ranch named Spitzie Place (40°52'09.1"N 108°56'58.3"W or 40.86919, -108.94953). Nothing remains at the site today.

Fanny Callaway (or Calloway) is listed as becoming postmaster on September 7, 1929 in Postal Bulletin #15100. This date is particularly interesting as the site report initiated by the USPOD for the move is dated August 27, 1929, signed by Fanny Calloway on September 7 and received stamped September 9. The topography division stamped the document on September 20, 1929, the day after it took effect per Postal Bulletin #15103.

If you note in Section 1 T10N R103W there is a Calloway Place.

Respectfully,
Chg into Daggett Co. FIRST ASSISTANT POSTMASTER GENERAL
Utah 5/1933
Lodere (Post Office)
Moffat (County)
Colo (State)

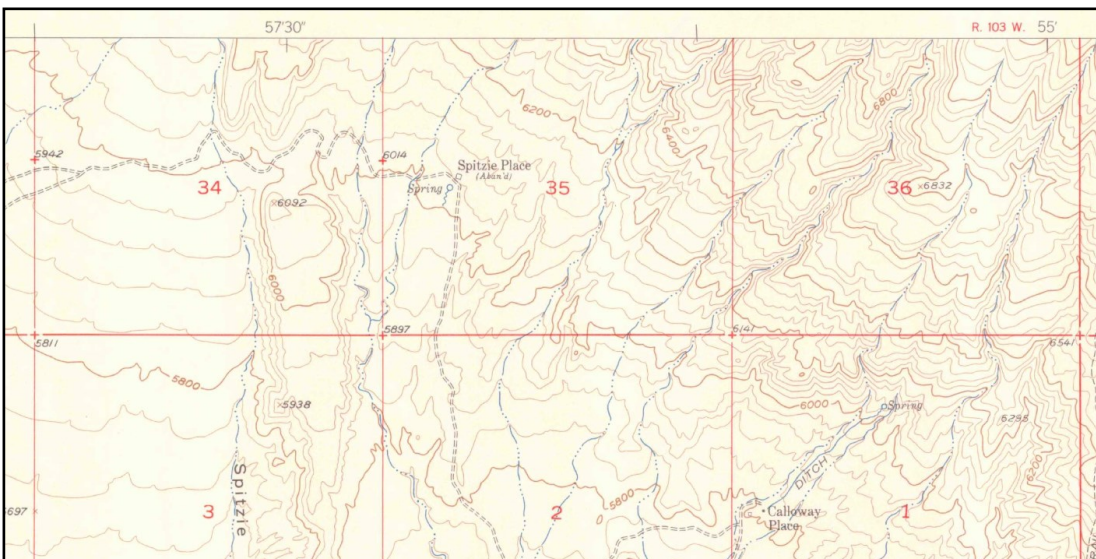
If the town, village, or site of the post office be known by another name than that of the post office, state that other name here

The post office, if changed to the proposed site, would be 2.5 miles air-line distance, 3.5 miles from its present location.
(N., S., E., or W.)

The post office would be situated in the South West quarter of section No. 35 in Township 11 N. Range 103 W. of the 6th principal meridian, County of Moffat, State of Colorado.
(N. or S.) (E. or W.)

The name of the nearest river is Green, and the post-office building would be at a distance of 2.5 miles on the North side of it.
(N., S., E., or W.)

The name of the nearest creek is Resner, and the post-office building would be at a distance of 5 miles on the South side of it.
(N., S., E., or W.)



1021
DIVISION OF POSTMASTERS

PROPOSED CHANGE IN LOCATION OF POST OFFICE

Post Office Department
FIRST ASSISTANT POSTMASTER GENERAL
Washington
May 15, 1933

Mrs. Margaret F. Callaway, P.M.
Lodore, Colorado.

Madam:

With reference to the proposed change in site of the post office named below, and in order that the office if changed to the proposed location may be accurately represented upon the post-route maps, it is requested that you carefully answer the questions below and furnish a sketch according to instructions on opposite side of paper, which should be returned to the First Assistant Postmaster General, Division of Postmasters, as soon as possible. Also send petition signed by patrons of office.

Respectfully,

4267
FIRST ASSISTANT POSTMASTER GENERAL
Lodore
Daggett Co. Utah Colorado
Moffat

If the town, village, or site of the post office be known by another name than that of the post office, state that other name here Bridgeport. Postoffice was formerly located there

The post office, if changed to the proposed site, would be 10 air-line distance, 24.10 from its present location.

The post office would be situated in the S. E. quarter of section No. 25 in Township 22 N Range 24 E of the Salt Lake principal meridian, County of Daggett State of Utah

The name of the nearest river is Green and the post-office building would be at a distance of 5.0 ft on the East side of it.

The name of the nearest creek is Willow and the post-office building would be at a distance of 3 miles on the West side of it.

The name of the nearest office on the same route as this post office is Greystone and its distance is 36 miles, by the traveled road, in a S. E. direction from the proposed site of this office.

The name of the nearest office on the same route, on the other side, is None and its distance is None miles, in a None direction from the proposed site of this office.

The name of the nearest office not on the same route as this post office is Kenilworth Utah and its distance is about 4 miles, by the traveled road, in a S. W. direction from the proposed site of this office.

The post office building would be on the West side of the Utah & N. R.R. Railroad, and at a distance of None from the station. The railroad station name is None.

The post office would be 5 miles air-line distance, None from the nearest point of my county boundary.

Signature in full: Margaret F. Callaway
Date: 4-5-33

2

If the State is surveyed designate the proposed site of the office on this page.

DIAGRAM, EXPLANATION, AND INSTRUCTIONS.

Indicate upon the diagram the proposed site of the post office by placing a dot in the proper quarter section.

The surrounding offices and the present site of this office should be accurately located and the names plainly written.

Draw distinctly the railways, roads, rivers, and creeks.

The post office would be situated in the 25 quarter of section No. 25 in Township 22 Range 24 of the Salt Lake principal meridian.

In localities not surveyed by the U. S. Land Office, a sketch map is requested.

RANGE 24 E (N. or S.) (E. or W.)

TOWNSHIP 22 (N. or S.) (E. or W.)

SECTION 25 (N. or S.) (E. or W.)

Scale, one-third inch to the mile.

Final Utah H. & N. air line 190 traveled road

4267
FIRST ASSISTANT POSTMASTER GENERAL
Lodore
Daggett Co. Utah Colorado
Moffat

If the town, village, or site of the post office be known by another name than that of the post office, state that other name here Bridgeport. Postoffice was formerly located there

The post office, if changed to the proposed site, would be 10 air-line distance, 24.10 from its present location.

The post office would be situated in the S. E. quarter of section No. 25 in Township 22 N Range 24 E of the Salt Lake principal meridian, County of Daggett State of Utah

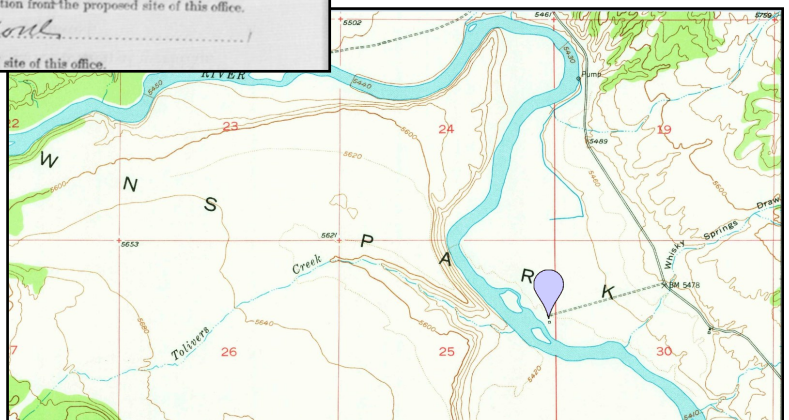
The name of the nearest river is Green and the post-office building would be at a distance of 5.0 ft on the East side of it.

The name of the nearest creek is Willow and the post-office building would be at a distance of 3 miles on the West side of it.

The name of the nearest office on the same route as this post office is Greystone and its distance is 36 miles, by the traveled road, in a S. E. direction from the proposed site of this office.

The name of the nearest office on the same route, on the other side, is None and its distance is None miles, in a None direction from the proposed site of this office.

In March 1933 a petition was filed to move the Lodore Post Office 10 miles to the former site of the Bridgeport, Utah Post Office (40°52'57.5"N 109°08'44.7"W or 40.882639, -109.14575). This is still within Browns Park. It was received on May 19, 1933 by the Topography Department of the US Post Office Department. According to the report the new location was on the same route as before, some 36 miles from the nearest post office on the same route.



Lodore (Post Office)		Daggett (County)		Utah (State)	
Office changed to Lodore, Moffat County, Colo.		Established _____		Discontinued _____	
POSTMASTER	NOMINATED	CONFIRMED	RECEIVED OR ACTING	COMMISSION SIGNED AND MAILED	ASSUMED CHARGE
Mrs. Margaret Callaway	Oct. 19, 29	Dec. 4, 29	Rec.		
Discontinued Nov. 7, 33. Effective Nov. 30, 33. Mail to Greystone. Modified Nov. 17, 33. Mail to be sent to Greystone, Colo.					

Viewing the Postmaster Appointment records (landing page <https://catalog.archives.gov/id/17027522>, Daggett County <https://catalog.archives.gov/id/78777939> and Lodore specifically <https://catalog.archives.gov/id/78777939?objectPage=4>), the Lodore, Utah Post Office discontinued November 30, 1933, only six months after moving. Just a few months later in February 1934, Mattie Taylor applied for a post office at the former Lodore, Utah site to be named Bridgeport, the location's first post office name.

Mattie Taylor filed another site report in 1938, probably mandated by the POD to all post offices as the form is a little different. Still at the same location, this report gives details at to how remote the Bridgeport Post Office was. Greystone, Colorado was by far the closest post office 39 miles (38.2 per 1934 report). Rock Springs, Wyoming was the next closest at 65 miles. The nearest Utah post office was Manila some 135 miles, but still within Daggett County.

The Bridgeport, Utah Post Office, formerly Lodore, Colorado nee Ladore was discontinued May 31, 1940. The final site is now part of the Browns Park National Wildlife Refuge.

ESTABLISHMENT
LOCATION OF PROPOSED POST OFFICE

Post Office Department
FIRST ASSISTANT POSTMASTER GENERAL
Washington Feb. 5, 1934

Mrs. Mattie Taylor,
Greystone, Colo.

Dear Madam:

With reference to the proposed establishment of a post office at the point named below, and in order that the office, if established, may be accurately represented upon the post-route maps, it is requested that you furnish accurately the information called for below and prepare a sketch according to instructions on opposite side of paper, which should be returned to the First Assistant Postmaster General, Division of Postmasters, as soon as possible.

Respectfully,
FIRST ASSISTANT POSTMASTER GENERAL.

4267
Proposed post office, Bridgeport Daggett (County) Utah (State)

If the town, village, or site of the post office be known by another name than that of the post office, state that other name here: Country Crown's Park. Location Bridgeport for many years

The post office would be situated in the N.E. quarter of section No. 25, in Township 2N, Range 24E, of the S.R. principal meridian, County of Daggett, State of Utah

The name of the nearest river is Green River and the post-office building would be at a distance of 100 yds on the E. side of it.

The name of the nearest creek is Willow Creek and the post-office building would be at a distance of 4 on the W. side of it.

The name of the nearest office on the same route as this proposed post office is Greystone, Colo and its distance is 38.20 miles, by the traveled road, in a E. direction from the site of this proposed office.

The name of the nearest office on the same route, on the other side, is miles, in a N. direction from the site of this proposed office.

The name of the nearest office not on the same route as this proposed post office is Rock Springs, Wyo. and its distance is 65 miles, by the traveled road, in a N. direction from the site of this proposed office.

The post-office building would be on the S. side of the U.P. Railroad, and at a distance of 65 from the track. The railroad station name is Rock Springs, Wyo.

The post office would be 6.25 air-line distance, W. from the nearest point of my county boundary.

Signature of Applicant for Postmaster: Mrs. Mattie Taylor
Date: Feb. 27, 1934

Post Office Department
FOURTH ASSISTANT POSTMASTER GENERAL
Washington
RETURN TO
DIVISION OF TOPOGRAPHY
AUG 26 1938
UTAH
FOURTH ASSISTANT POSTMASTER GENERAL

Postmaster, BRIDGEPORT, UTAH

The following information is required in order that your post office may be shown in its proper location on postal maps. Please complete this form immediately and return it without delay with the map or sketch described on the reverse side. A letter of reply is not necessary.

1. Street address of post office County Daggett

2. Township 2 N. (If location is described by section, township, and range, fill in line 3.)

3. Quarter of section 25 Township 2 N. or S. Range 24 E. or W. East

4. Nearest adjoining Daggett, Colo. How far: Shortest air distance? 3.5 by road? 4

5. Nearest U. S. or State highway U.S. 40 Direction from P.O. East Distance 4 miles

6. Name of nearest railroad station Caldwell Name of railroad U.P.

7. Distance by road to railroad station 6.5 miles Direction from post office South

8. Shortest air distance to nearest tracks 4 miles Direction from post office South

9. Nearest streams or bodies of water (state whether river, creek, branch, lake, ocean, etc.):
Green River S.W. 40 ft.

10. Post offices nearest to your office (one in each general direction):
Greystone, Colo. Moffat E. by S.E. 39 mi
Rock Springs, Wyo. Sweetwater North 65 mi
Manila, Utah Daggett W. by N.W. 135 mi
Vernal, Utah Uintah S. by S.W. 160 mi

11. How is mail supplied to your office? Star route From where? Mayfield, Colo.

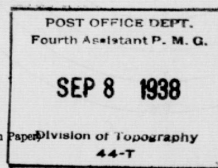
POST OFFICE DEPT.
Fourth Assistant P. M. G.
SEP 8 1938
(Signed) Mrs. Mattie Taylor
Post office Bridgeport, Utah
(OVER)

10. Post offices nearest to your office (one in each general direction):

Name	County	Direction from your office	Distance by road
Greystone, Colo.	Moffat	E. by S.E.	39 mi
Rock Springs, Wyo.	Sweetwater	North	65 mi
Manila, Utah	Daggett	W. by N.W.	135 mi
Vernal, Utah	Uintah	S. by S.W.	160 mi

11. How is mail supplied to your office?

Star route From where? Mayfield, Colo.



(Date) Sept. 5, 1938
(Signed) Mrs. Mattie Taylor
Post office Bridgeport, Utah
(OVER)