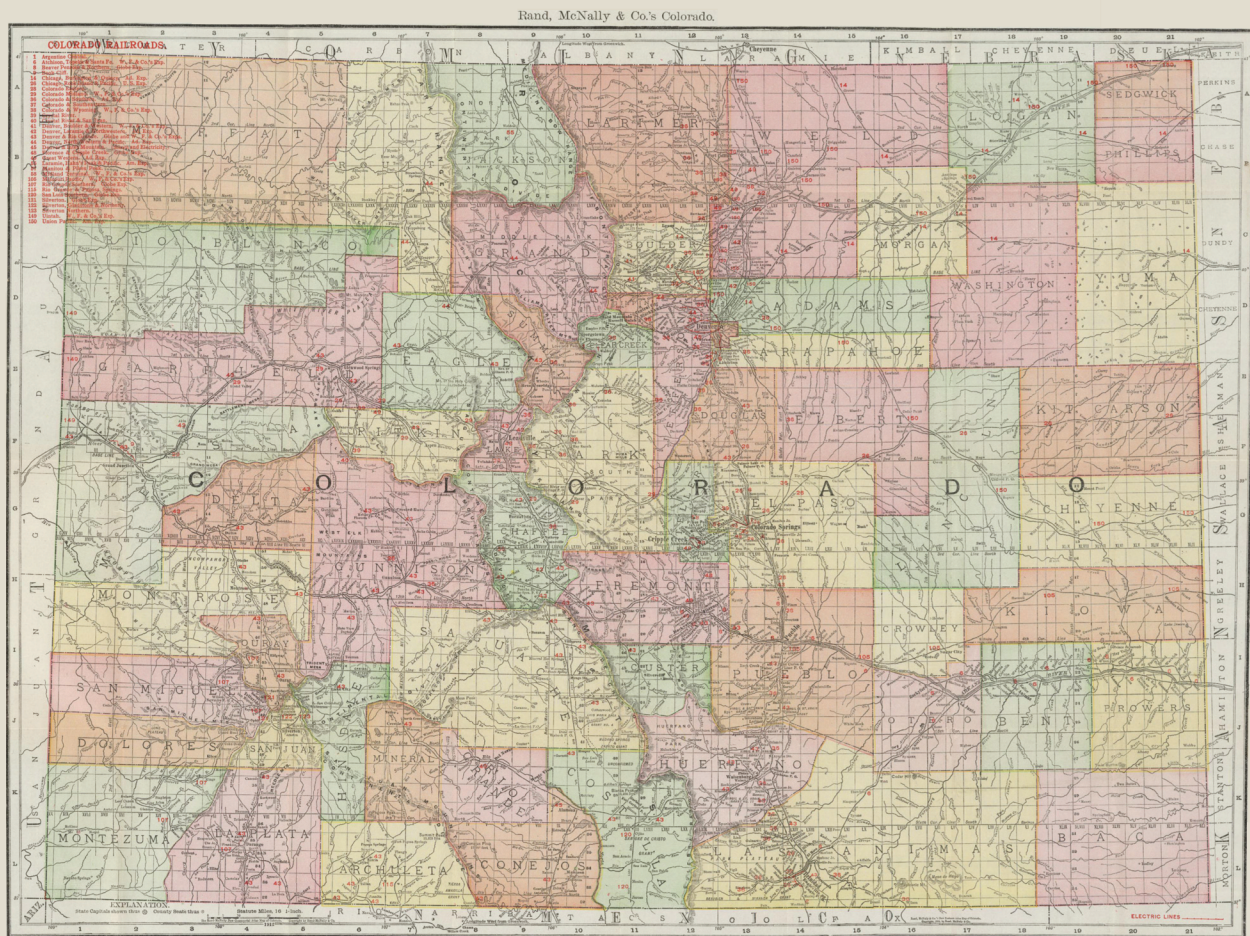


# *The* **Colorado Postal Encyclopedia**



Map courtesy of <http://www.davidrumsey.com>

## **Volume II - The D - J Counties**

*Delta - Denver - Dolores - Douglas - Eagle - Elbert - El Paso  
Fremont - Garfield - Gilpin - Grand - Gunnison  
Hinsdale - Huerfano - Jackson - Jefferson*

**WILLIAM H. BAUER**



Digital Edition Revised & Enlarged  
by Steven R. Morehead - Roger D. Rydberg - Peter J. Ditlow



## INTRODUCTION TO VOLUME II

The completion and publication of Volume II of the digital revision of *The Colorado Postal Encyclopedia* has taken much longer than anticipated. It is nearly twice the size of Volume I (16 versus 15 counties but 1814 versus 957 pages). The larger size of Volume II is intended to make it possible to include the entire digital revision on either three or four DVDs. We have now covered 31 of Colorado's 64 counties including the two largest in page count (Denver and El Paso). Nonetheless, a variety of problems too numerous to detail has delayed this publication overly long. For that we apologize.

Because this is a digital revision it might be appropriate to explain that term in more detail than was done in the Introduction to Volume I. Some have asked about a printed version. That was never our intention. The sheer size of the revision (est. to be five to six thousand pages) precluded that option. However, the revision has been arranged as the original chapters that Bill Bauer published in the *Historian*. Each chapter has its own title page and page numbering which permits the printing of individual chapters if the reader so wishes. Please note that all images have a similar black frame lines around them. The computer screen appearance often fails to show parts of these lines. This is an artifact of the computer rendering only, and all will print with the full frame lines when printed at 300dpi.

For a digital revision the best choice at the time seemed to be as an Adobe Portable Document File<sup>®</sup> (PDF). This file type can be read on most any computer; the software for doing so (Adobe Reader<sup>®</sup>) is free and readily available. That most essential part of any useful document, the index, is not published since PDFs are readily searchable while in use.

The choice of DVD format seemed most appropriate at the time. Now I understand that computers are commonly manufactured without DVD drives. The revision can easily be transferred to either the Cloud or onto an external drive. What storage methods will be widely used in the future we know not.

A few of the covers illustrated in the printed version were no longer available for illustration. These were from Bauer's collection, which was sold in 2013. Although the Rocky Mountain Philatelic Library has Bill's records and files, he apparently did not photograph all of the covers he illustrated. We have replaced most of those with similar covers but some simply had to left out of the revision. Unfortunately, a few of his cancel tracings also could not be located. They have been indicated in the revision by printing in red.

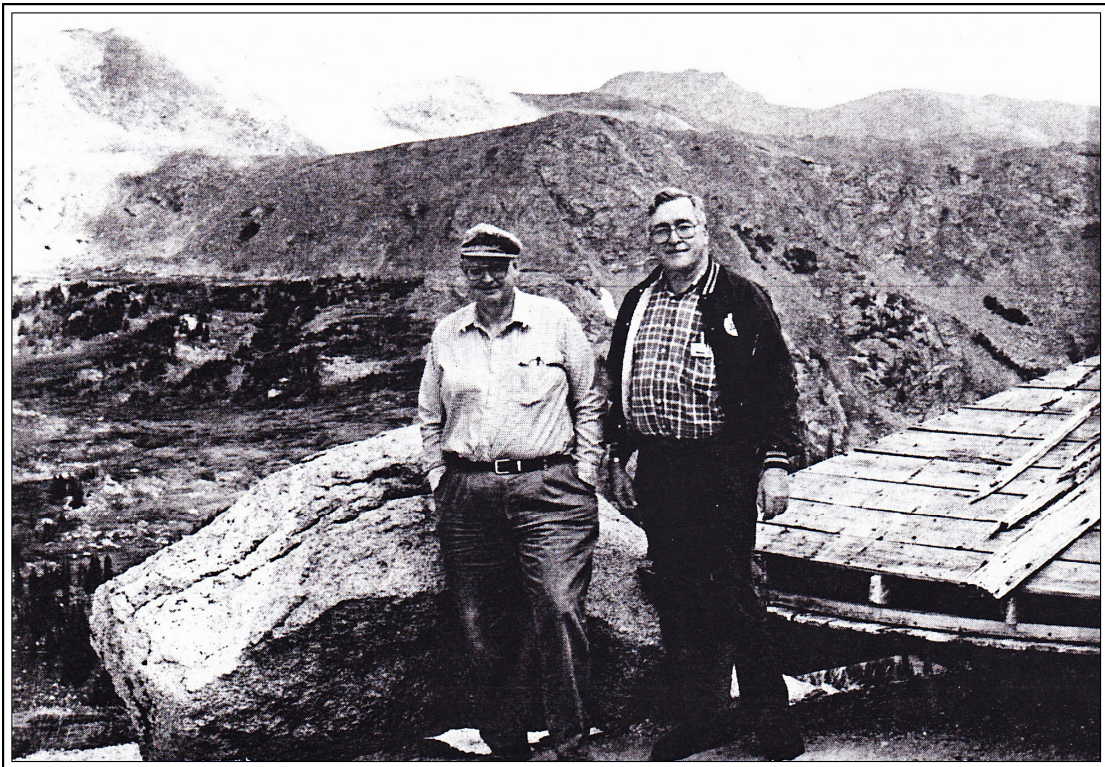
We have retained Bill's exact text throughout with very, very few exceptions. These exceptions were necessitated either to keep a uniform layout on the pages or to enhance clarity in a few instances. In the first cases, slightly different wording was substituted but without altering the meaning of the text.

We fully realize much of what is here is 20+ years old from when Bill first wrote it. The intent of our revision was to add new unlisted cancels, solicit further information and examples of listed cancels, and to provide a gallery of covers in color. It was not our intention to revisit the town and post office sites and revise driving directions and provide modern driving directions. We leave that part of the adventure to avid Colorado postal historians.

## ACKNOWLEDGMENTS

I wish to most sincerely thank my fellow editors, Roger Rydberg and Joe Ditlow, for all their hard work on the project. Joe deserves all the credit for the revision of Denver and El Paso Counties. Roger helped immeasurably with art work and was a fount of common sense. A special thanks to Andy Murin for many trips to the Federal Archives in Denver and for on-the-ground knowledge of various sites which he shared. Grateful thanks also to our anonymous proofreaders. They have labored without recognition but receive our sincere thanks for all their work. And thanks to Don Beuthel, Bob Chow, Joe Coston, J. Robert Hamill, Erik Hendrickson, Andy Murin, David New, Duane Spidle, H. L. Harmer Auctions, Daniel F. Kelleher Auctions, Rumsey Auctions and all the many wonderful Ebay sellers that provided cover images for this revision. Jennifer, at the Colorado State Archives, was extremely helpful in locating and providing copies of the County Highway Maps used in this revision. If I've forgotten anyone, it wasn't intentional, and thanks to you also.

Since I provided the final editing and assembly of the revision, all errors and omissions are my responsibility. I close, as before, with my admiration and respect for those who made the first edition possible – Bill Bauer and Jim Ozment.



Steve Morehead  
Green Valley, AZ  
March 6, 2021